



PARTS CATALOGUE

T135SEC (55D1) MALAYSIA



1K55D-440E1

()

T135SEC
PARTS CATALOGUE
©2011 by Yamaha Motor Co., Ltd.
1st edition, February 2011
All rights reserved.
Any reprinting or unauthorized use
without the written permission of
Yamaha Motor Co., Ltd.
is expressly prohibited.
Printed in Japan.

FOREWORD

This Parts Catalogue is related to the parts for the model(s) on the cover page. When you are ordering replacement parts, please refer to this Parts Catalogue and quote both part numbers and part names correctly.

1. Modifications or additions which have been made after the issue of the Parts Catalogue will be announced in the Parts News.

It is advisable that you make the necessary corrections to the Parts Catalogue according to the Parts News.

2. Abbreviations

The following abbreviations are used in this Parts Catalogue.

“UR” Use specified parts number.

“UN” Use as many as needed.

“AP” Alternate Parts

“LM” Locally Made (Parts need to be ordered locally)

“F#” Frame No. (Applicable machine No.)

“O/S” Over Size

3. The number of components for assembly

- Parts, which are to be supplied in an assembly, are listed with a dot (.) in front of the part name as shown below.
- The numeral appearing to the right of each component part indicates the quantity of parts for each assembly unit.

PART NO.	DESCRIPTION	Q'TY	REMARKS
2F5-83310-60	FRONT FLASHER LIGHT ASSY	2	
115-83311-60	.BULB (6V-18W)	1	

4. Applicable colours of graphics are represented in the “REMARKS” as shown below.

PART NO.	DESCRIPTION	Q'TY	REMARKS
2N4-24110-00-X5	FUEL TANK COMP.	2	MXR
3J1-24240-10	.GRAPHIC, FUEL TANK	1	FOR MXR

5. Note that the illustrations for reference in finding parts numbers are not to be used for assembling. When assembling, please use the applicable service manual.

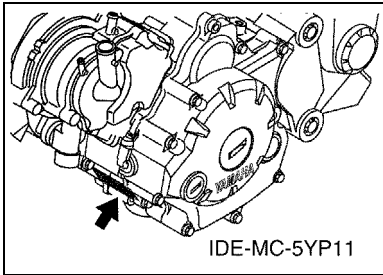
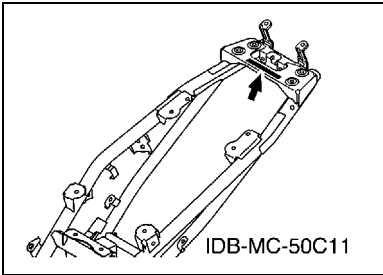
6. The asterisk (*) before a reference number indicates modified items after the first edition.

FOREWORD

7. Applicable Serial No.

Frame Serial No.

Engine Serial No.



8. Applicable Colour Code (The (*) mark shows Model colour.)

Abbreviation	Colour Name	Colour Code
BWC1(*)	BLUISH WHITE COCKTAIL 1	0390
MT2	MAT TITAN 2	0826
RM7(*)	RED METALLIC 7	1218
S3	SILVER 3	0791
SMX(*)	BLACK METALLIC X	0903

9. Applicable Starting Serial No.

Frame Serial No.

Serial No.	Name Of Q'ty Column	Model Code

Engine Serial No.

Serial No.	Name Of Q'ty Column	Model Code

CONTENTS

ENGINE

CYLINDER HEAD	1
CRANKSHAFT & PISTON	2
VALVE	3
CAMSHAFT & CHAIN	4
WATER PUMP	5
RADIATOR & HOSE	6
OIL PUMP	7
INTAKE	8
CARBURETOR	10
EXHAUST	12
CRANKCASE	13
CRANKCASE COVER 1	14
STARTER	15
STARTER CLUTCH	16
CLUTCH	17
TRANSMISSION	19
SHIFT CAM & FORK	21
SHIFT SHAFT	22

CHASSIS

FRAME	23
FENDER	24
SIDE COVER	25
REAR ARM & SUSPENSION	27
STEERING	28
FRONT FORK	29
FUEL TANK	30
SEAT	31
FRONT WHEEL	32
FRONT BRAKE CALIPER	33
REAR WHEEL	34
STEERING HANDLE & CABLE	36
FRONT MASTER CYLINDER	38
STAND & FOOTREST	39
LEG SHIELD	41
GENERATOR	44
STARTING MOTOR	45
FLASHER LIGHT	46
METER	47
HEADLIGHT	48
TAILLIGHT	49

HANDLE SWITCH & LEVER	50
ELECTRICAL 1	51
ELECTRICAL 2	52

INDEX

NUMERICAL INDEX	53
-----------------------	----

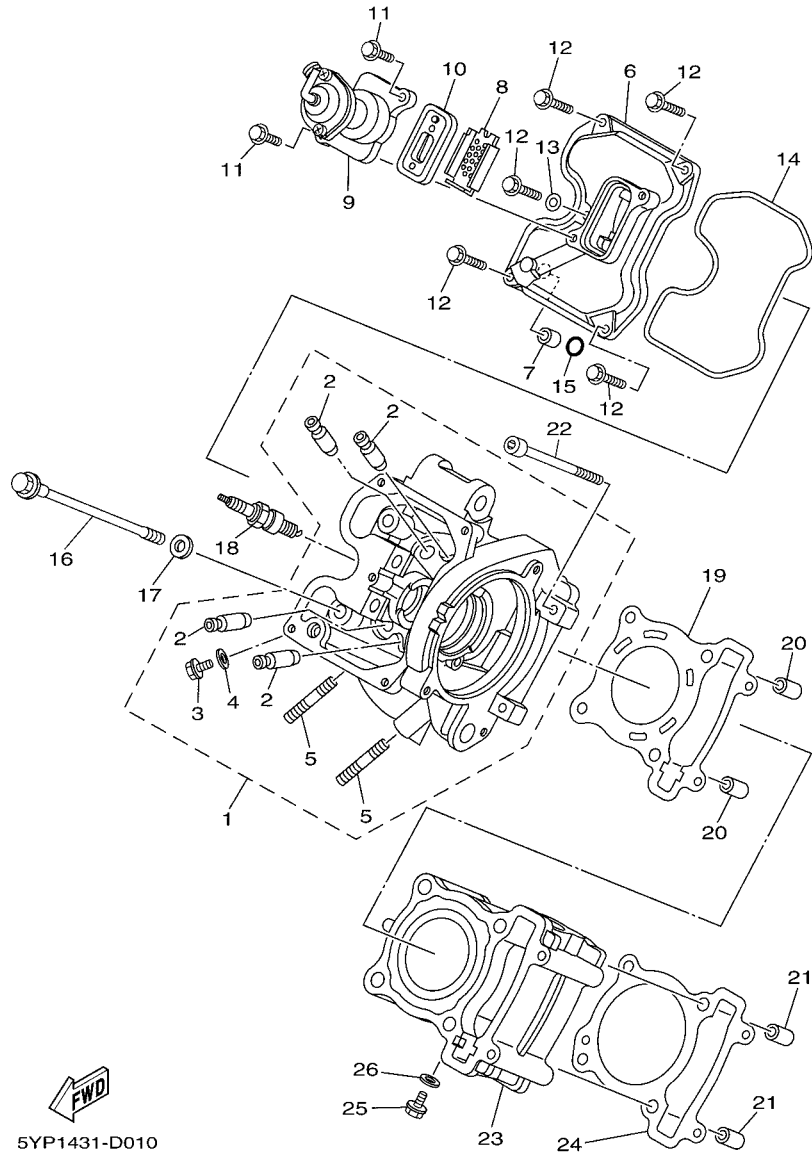
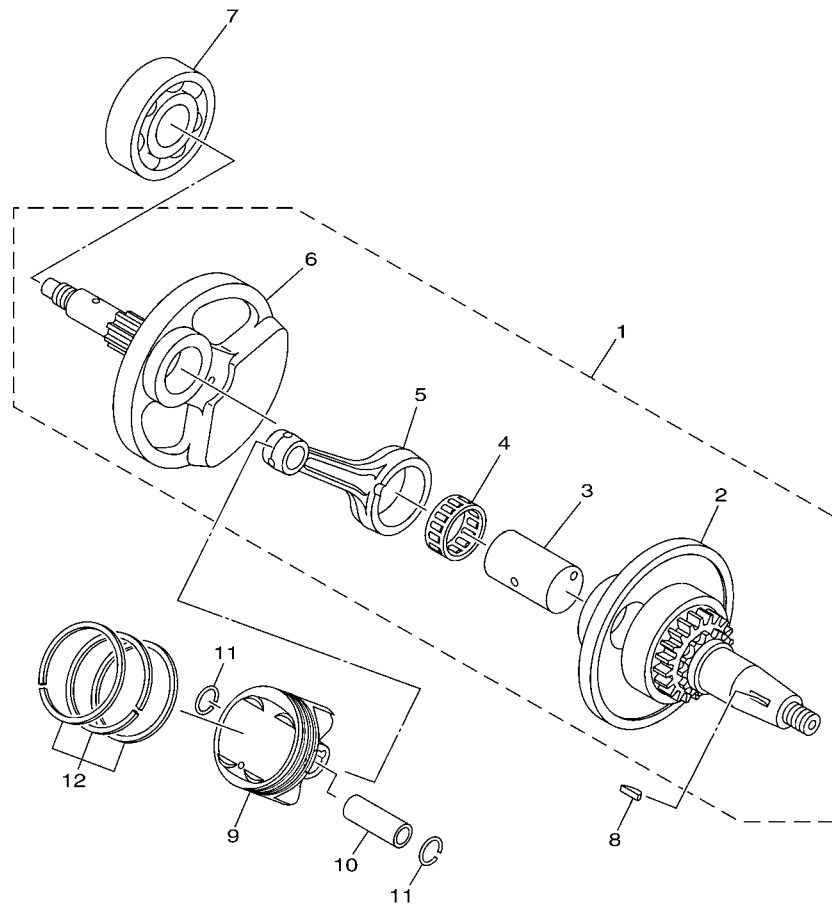


FIG. 1 CYLINDER HEAD

REF. NO.	PART NO.	DESCRIPTION	55D1				REMARKS
1	1S8-E1102-00	CYLINDER HEAD ASSY	1				
2	5YP-E1133-10	.GUIDE, VALVE 1	4				
3	90153-06803	.SCREW, HEXAGON	1				
4	90430-06817	.GASKET	1				
5	95617-08620	.BOLT, STUD	2				
6	1S8-E1191-00	COVER, CYLINDER HEAD 1	1				
7	91811-10005	PIN, DOWEL	1				
8	5YP-1482K-00	PLATE	1				
9	5YP-E4840-00	AIR CUT VALVE ASSY	1				
10	5YP-E4890-00	REED VALVE ASSY	1				
11	95027-06014	BOLT, FLANGE	2				
12	95027-06020	BOLT, FLANGE	5				
13	90430-06817	GASKET	1				
14	5YP-E1193-00	GASKET, HEAD COVER 1	1				
15	93210-11802	O-RING	1				
16	90105-08850	BOLT, FLANGE	4				
17	90201-08609	WASHER, PLATE	4				
18	94700-00884	PLUG, SPARK (NGK CPR8EA)	1				
19	1S8-E1181-01	GASKET, CYLINDER HEAD 1	1				
20	99530-10114	PIN, DOWEL	2				
21	99530-10114	PIN, DOWEL	2				
22	91317-06100	BOLT	2				
23	50C-E1311-00	CYLINDER 1	1				
24	55D-E1351-00	GASKET, CYLINDER	1				
25	90153-06803	SCREW, HEXAGON	1				
26	90430-06817	GASKET	1				



1S71460-E020

FIG. 2 CRANKSHAFT & PISTON

REF. NO.	PART NO.	DESCRIPTION	55D1				REMARKS
1	1S8-WE140-11	CRANKSHAFT ASSY	1				
2	1S8-WE141-00	.CRANK SUB ASSY 1	1				
3	1S8-11681-01	.PIN, CRANK 1	1				
4	93310-528X7	.BEARING	1				
5	5YP-E1651-10	.ROD, CONNECTING	1				
6	1S8-E1422-00	.CRANK 2	1				
7	93306-305X7	BEARING	1				
8	90280-03017	KEY, WOODRUFF	1				
9	5YP-E1631-21	PISTON (STD)	1				
10	1S8-11633-01	PIN, PISTON	1				
11	93450-16115	CIRCLIP	2				
12	50C-E1603-00	PISTON RING SET (STD)	1				

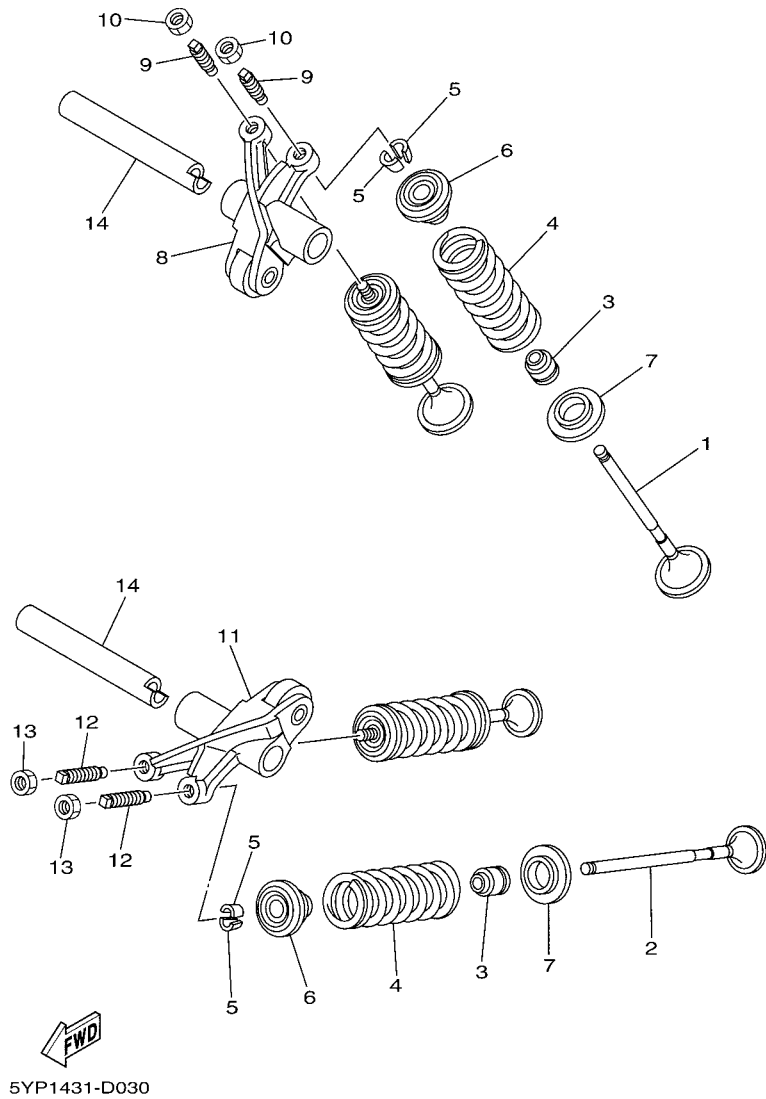


FIG. 3 VALVE

REF. NO.	PART NO.	DESCRIPTION	55D1				REMARKS
1	5YP-E2111-00	VALVE, INTAKE	2				
2	5YP-E2121-00	VALVE, EXHAUST	2				
3	5YP-E2119-00	SEAL, VALVE STEM	4				
4	5YP-E2113-00	SPRING, VALVE INNER	4				
5	1WG-12118-00	COTTER, VALVE	8				
6	5YP-12117-00	RETAINER, VALVE SPRING	4				
7	5YP-E2126-00	SEAT, VALVE SPRING 2	4				
8	5YP-E2151-00	ARM, VALVE ROCKER	1				
9	5YP-E2159-00	SCREW, VALVE ADJUSTING	2				
10	90170-05302	NUT	2				
11	5YP-E2161-00	ARM, VALVE ROCKER 2	1				
12	5YP-E2159-00	SCREW, VALVE ADJUSTING	2				
13	90170-05302	NUT	2				
14	1S8-E2156-00	SHAFT, ROCKER 2	2				

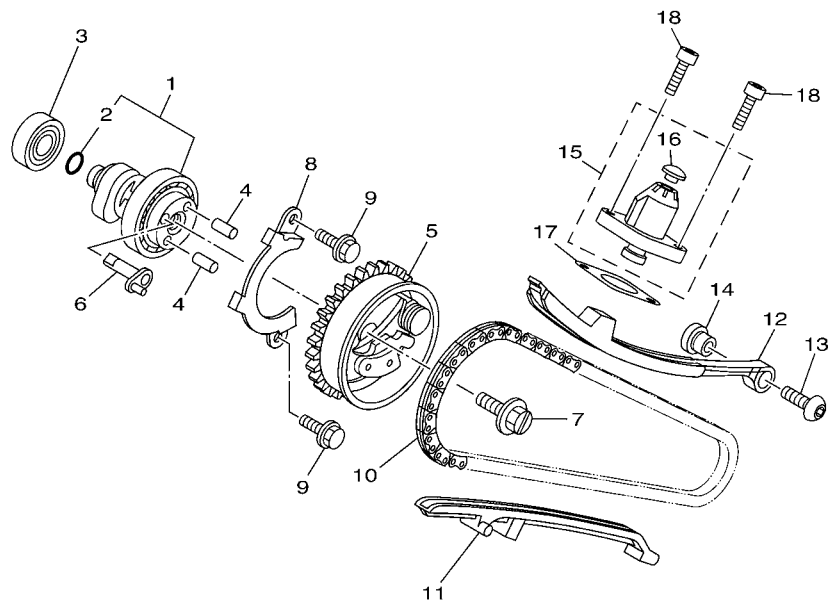
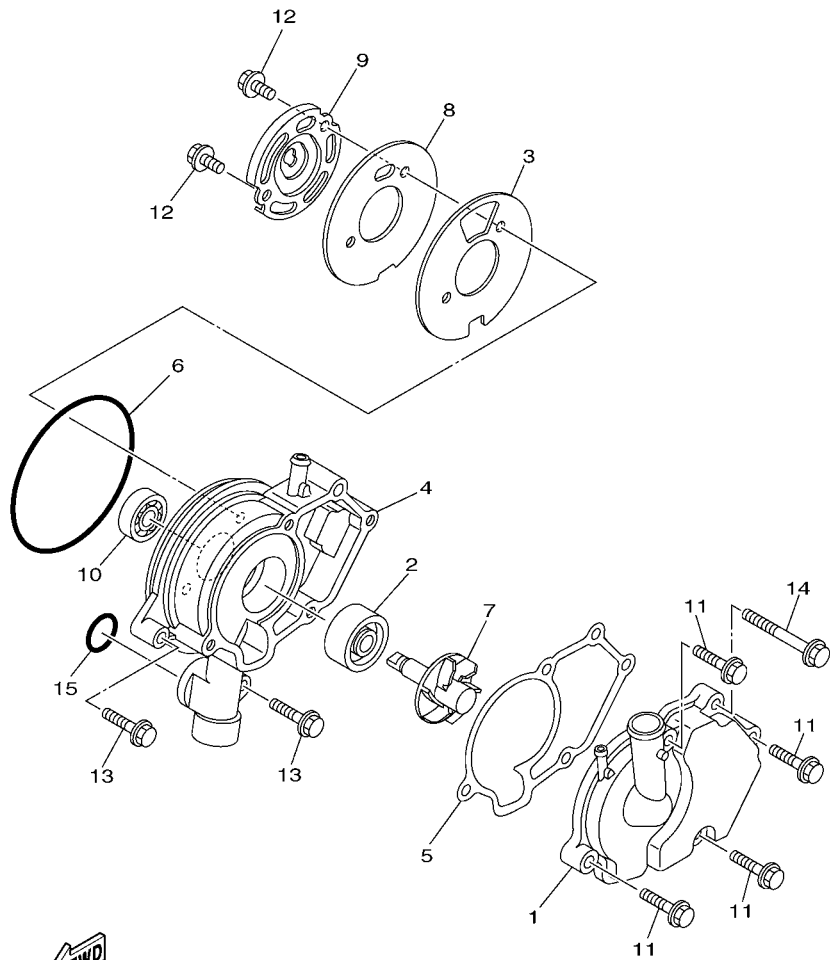


FIG. 4 CAMSHAFT & CHAIN

REF. NO.	PART NO.	DESCRIPTION	55D1				REMARKS
1	21S-E2170-01	CAMSHAFT ASSY 1	1				
2	93210-09805	.O-RING	1				
3	93306-001X2	BEARING	1				
4	93605-06002	PIN, DOWEL	2				
5	1B9-E2280-02	DECOMPRESSION ASSY	1				
6	5YP-E2288-00	CAM, DECOMPRESSION	1				
7	5YP-E2157-00	BOLT	1				
8	1S8-E111F-00	PLATE	1				
9	95027-06010	BOLT, FLANGE	2				
10	94568-A8096	CHAIN	1				
11	1S8-E2231-00	GUIDE, STOPPER 1	1				
12	1S8-E2241-00	GUIDE, STOPPER 2	1				
13	90149-06829	SCREW	1				
14	1S8-E5598-00	COLLAR	1				
15	5MX-E2210-00	TENSIONER ASSY, CAM CHAIN	1				
16	5MX-E2222-00	.PLUG	1				
17	1S8-E2213-01	GASKET, TENSIONER CASE	1				
18	91317-06016	BOLT	2				


55D1440-K040

FIG. 5 WATER PUMP



50C1460-K050

REF. NO.	PART NO.	DESCRIPTION	55D1				REMARKS
1	1S7-E2422-00	COVER, HOUSING	1				
2	93103-10801	OIL SEAL	1				
3	50C-E2428-00	GASKET, HOUSING COVER 2	1				
4	1S7-E1185-01	COVER, CYLINDER HEAD SIDE 3	1				
5	1S7-E1196-00	GASKET, CYLINDER HEAD SIDE	1				
6	93210-84801	O-RING	1				
7	1S7-E2450-00	IMPELLER SHAFT ASSY	1				
8	50C-E1951-00	PLATE	1				
9	1S7-E1952-01	PLATE	1				
10	93306-000Y3	BEARING	1				
11	95027-06025	BOLT, FLANGE	4				
12	95027-06012	BOLT, FLANGE	2				
13	95027-06025	BOLT, FLANGE	2				
14	95027-06050	BOLT, FLANGE	1				
15	93210-19809	O-RING	1				

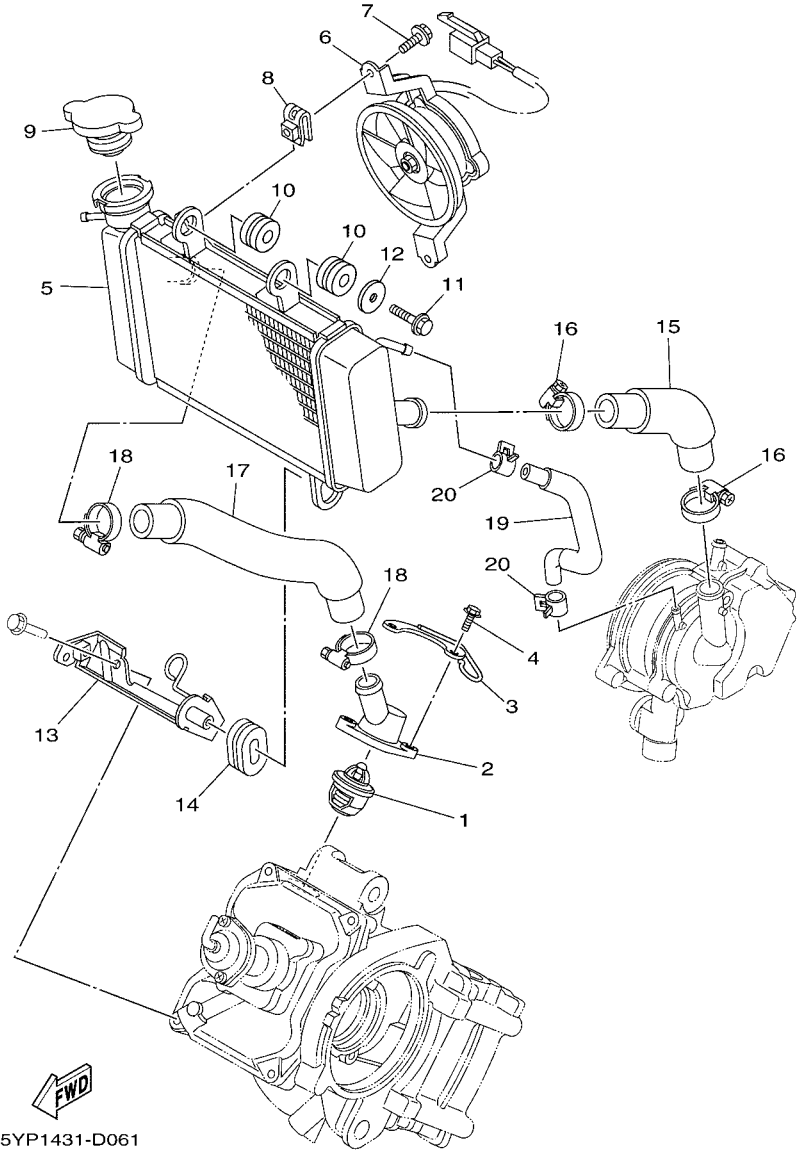
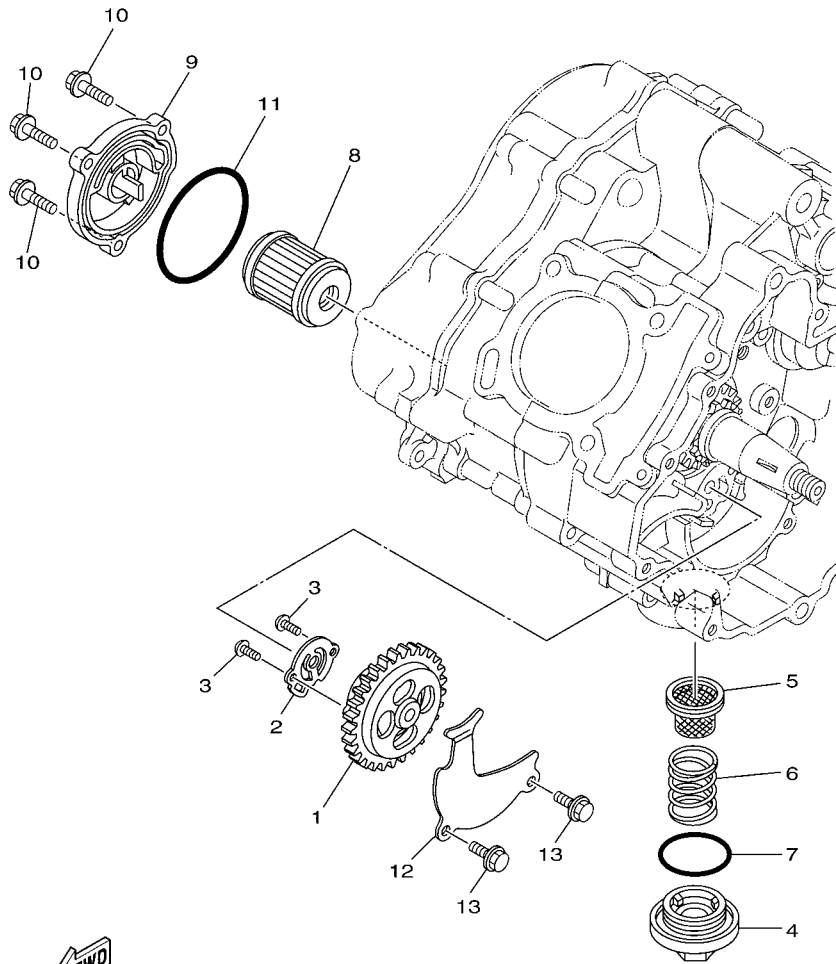


FIG. 6 RADIATOR & HOSE

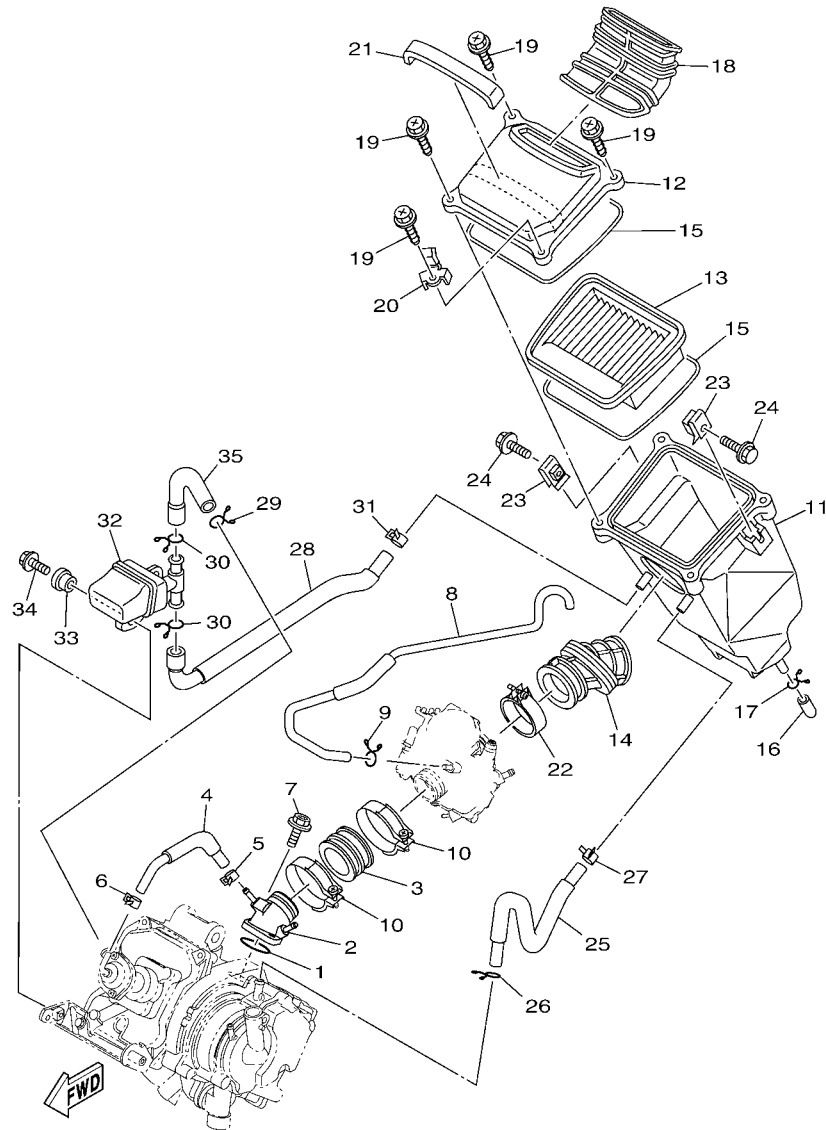
REF. NO.	PART NO.	DESCRIPTION	55D1				REMARKS
1	5YP-12411-00	THERMOSTAT	1				
2	1S8-E2413-00	COVER, THERMOSTAT	1				
3	5YP-E2491-00	CLAMP 1	1				
4	90105-06848	BOLT, FLANGE	2				
5	5YP-E2461-00	RADIATOR COMP	1				
6	5YP-E2405-00	BLOWER ASSY	1				
7	5YP-E2675-00	BOLT, BLOWER HOLDING	2				
8	5YP-E2671-00	NUT 1	2				
9	5P0-E2590-00	CONDUCTION ASSY	1				
10	90480-15363	GROMMET	2				
11	95827-06016	BOLT, FLANGE	1				
12	90201-06069	WASHER, PLATE	1				
13	1S8-E2443-01	STAY	1				
14	90480-01803	GROMMET	1				
15	1S8-E2481-00	PIPE 1	1				
16	90450-27803	HOSE CLAMP ASSY	2				
17	1S8-E2482-00	PIPE 2	1				
18	90450-27803	HOSE CLAMP ASSY	2				
19	5YP-E2576-00	HOSE 1	1				
20	90467-10038	CLIP	2				



5YP1431-D070

FIG. 7 OIL PUMP

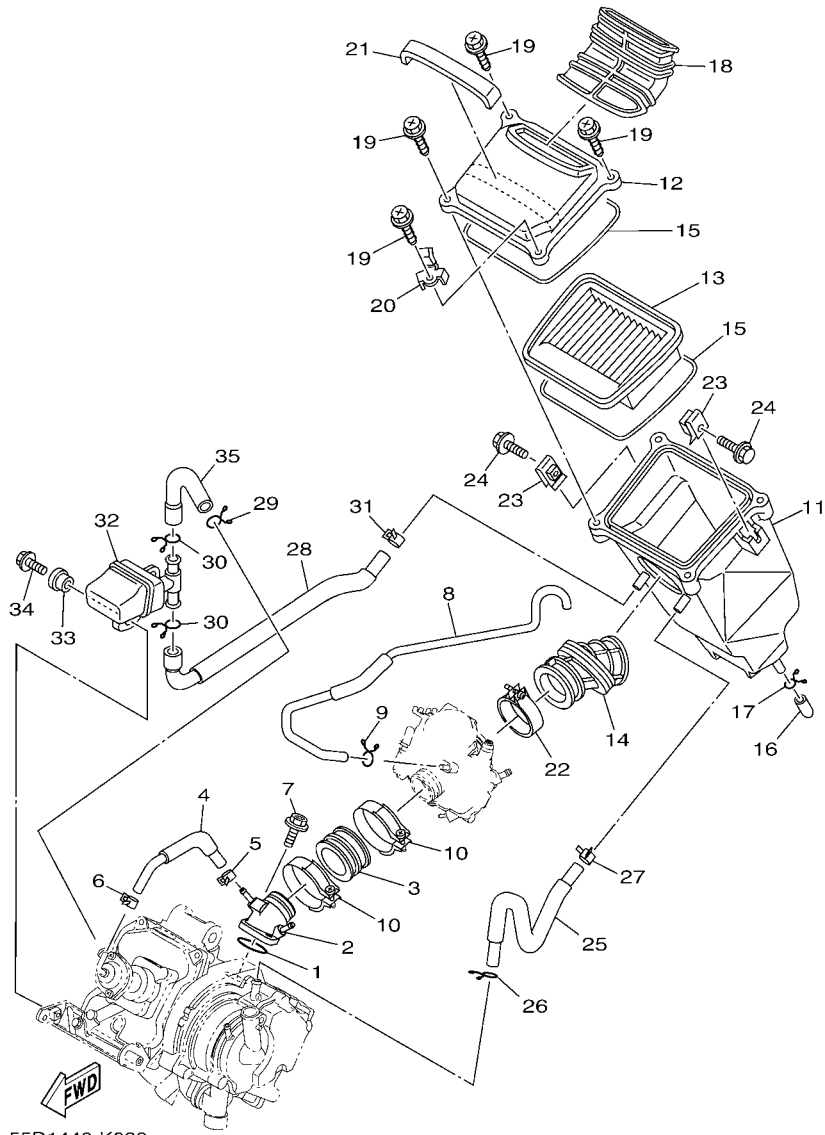
REF. NO.	PART NO.	DESCRIPTION	55D1				REMARKS
1	1S7-E3300-00	OIL PUMP ASSY	1				
2	1S8-E3329-00	GASKET, PUMP COVER	1				
3	92017-05025	BOLT, BUTTON HEAD	2				
4	1S8-E5351-00	PLUG, DRAIN	1				
5	1S8-E3411-00	STRAINER, OIL	1				
6	90501-18576	SPRING, COMPRESSION	1				
7	93210-34801	O-RING	1				
8	5YP-E3440-00	ELEMENT ASSY, OIL CLEANER	1				
9	5YP-E3447-10	COVER, OIL ELEMENT	1				
10	9502L-06020	BOLT, FLANGE	3				
11	93210-59800	O-RING	1				
12	1S8-E3327-00	COVER, PUMP GEAR	1				
13	9502L-06012	BOLT, FLANGE	2				



55D1440-K080

FIG. 8 INTAKE

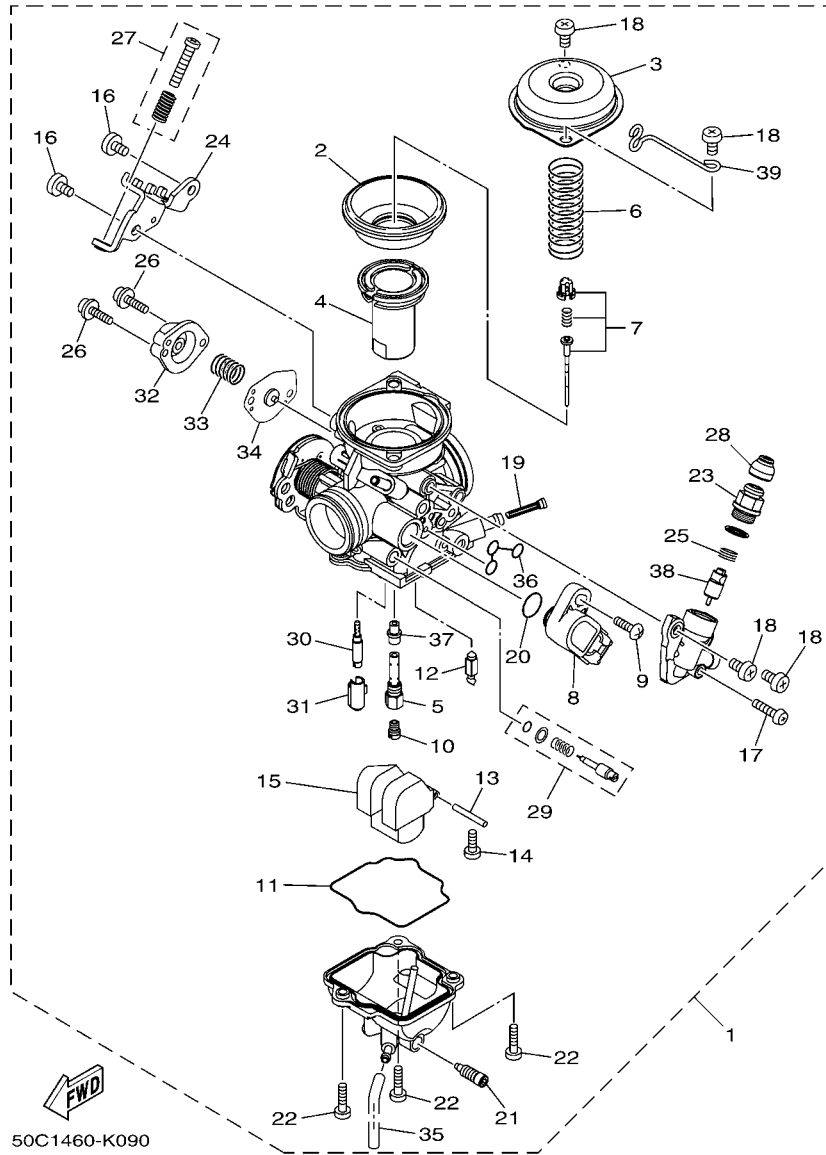
REF. NO.	PART NO.	DESCRIPTION	55D1				REMARKS
1	93210-32807	O-RING	1				
2	50C-E3536-00	JT. , CARBURETOR	1				
3	50C-E3586-00	JOINT, CARBURETOR 1	1				
4	1S7-E3542-00	HOSE, VACUUM SENSING 1	1				
5	90467-08801	CLIP	1				
6	90467-08801	CLIP	1				
7	90105-06061	BOLT, FLANGE	2				
8	55C-E4197-00	PIPE	1				
9	90467-07029	CLIP	1				
10	5MX-E3474-01	BAND	2				
11	50C-E4411-00	CASE, AIR CLEANER 1	1				
12	1S7-E4412-00	CAP, CLEANER CASE 1	1				
13	1S7-E4450-00	ELEMENT ASSY, AIR CLEANER	1				
14	50C-E4453-00	JOINT, AIR CLEANER 1	1				
15	1S7-E4452-00	SEAL	2				
16	5TL-E443E-00	PIPE, DRAIN	1				
17	90467-12800	CLIP	1				
18	1S7-E4437-00	DUCT	1				
19	90163-05803	SCREW, TAPPING	4				
20	90462-08814	CLAMP	1				
21	1S7-E4425-00	DAMPEN 1	1				
22	5MX-E3575-01	BAND	1				
23	90183-06023	NUT, SPRING	2				
24	90119-06051	BOLT, WITH WASHER	2				
25	50C-E1166-00	PIPE, BREATHER 1	1				
26	90467-13858	CLIP	1				
27	90467-13064	CLIP	1				



55D1440-K080

FIG. 8 INTAKE

REF. NO.	PART NO.	DESCRIPTION	55D1				REMARKS
28	55C-E4882-00	HOSE, BEND 2	1				
29	90467-15012	CLIP	1				
30	90467-15012	CLIP	2				
31	90467-14117	CLIP	1				
32	1S7-E4877-01	RESONATOR	1				
33	90387-068B0	COLLAR	1				
34	97027-06016	BOLT, HEXAGON	1				
35	1S8-E4881-01	HOSE, BEND 1	1				



50C1460-K090

FIG. 9 CARBURETOR

REF. NO.	PART NO.	DESCRIPTION	55D1				REMARKS
1	55D-E4901-00	CARBURETOR ASSY 1	1				
2	5LW-24411-00	.DIAPHRAGM	1				
3	5LW-14958-00	.COVER, DIAPHRAGM	1				
4	31S-14112-00	.VALVE, THROTTLE 1	1				
5	50C-14261-00	.HOLDER	1				
6	50C-14589-00	.SPRING	1				
7	55D-1490J-00	.NEEDLE SET	1				
8	18D-H5885-00	.THROTTLE SENSOR ASSY	1				
9	5YP-14429-00	.SCREW	1				
10	3G2-14231-23	.JET, MAIN (#115)	1				
11	5HK-14147-00	.O-RING	1				
12	5LW-14150-00	.NEEDLE ASSY	1				
13	353-14186-00	.PIN, FLOAT	1				
14	98507-04008	.SCREW, PAN HEAD	1				
15	5HK-14985-00	.FLOAT	1				
16	98507-05008	.SCREW, PAN HEAD	2				
17	98507-04018	.SCREW, PAN HEAD	1				
18	98507-05010	.SCREW, PAN HEAD	4				
19	5LW-14994-00	.NET, FILTER	1				
20	5YP-14561-00	.O-RING	1				
21	5MP-14191-00	.PLUG, DRAIN	1				
22	98507-04014	.SCREW, PAN HEAD	3				
23	3RW-14174-00	.CAP, PLUNGER	1				
24	50C-14995-00	.BRACKET	1				
25	509-14135-00	.COIL, SPRING	1				
26	97607-04114	.SCREW, WITH WASHER	2				
27	5LW-14103-00	.THROTTLE SCREW SET	1				

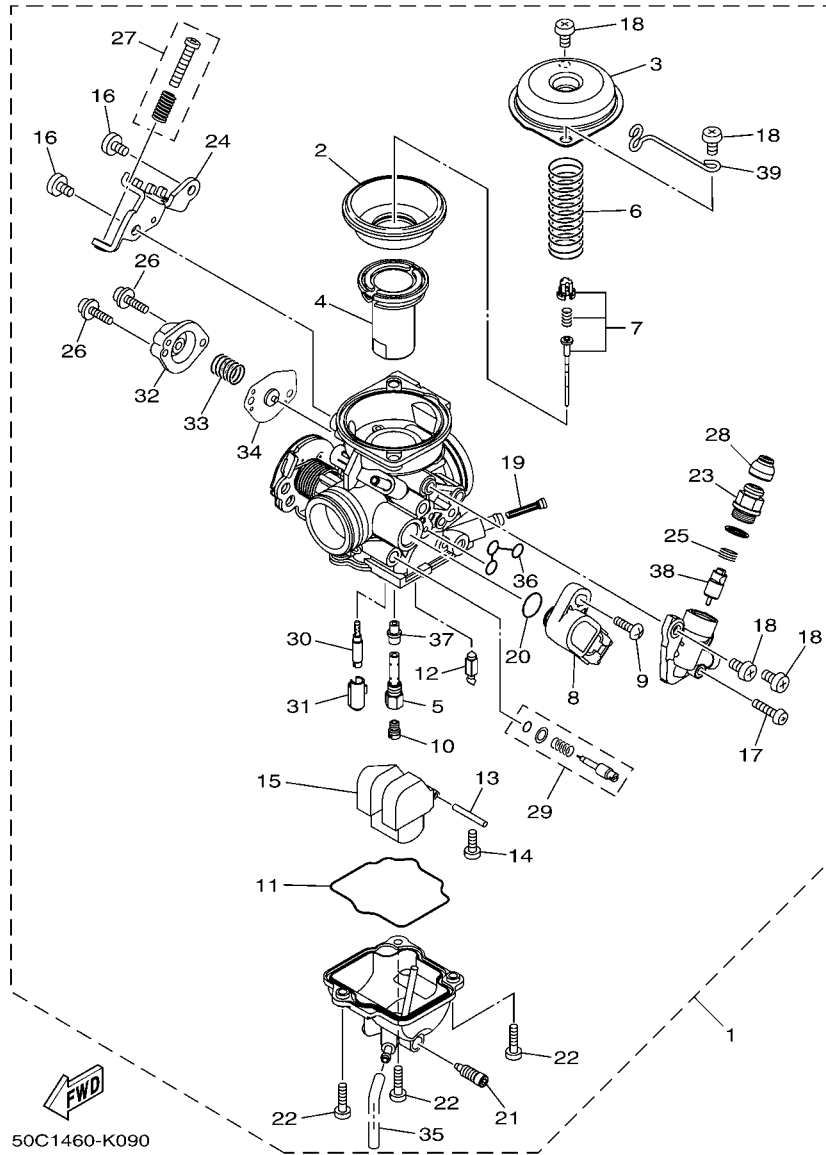
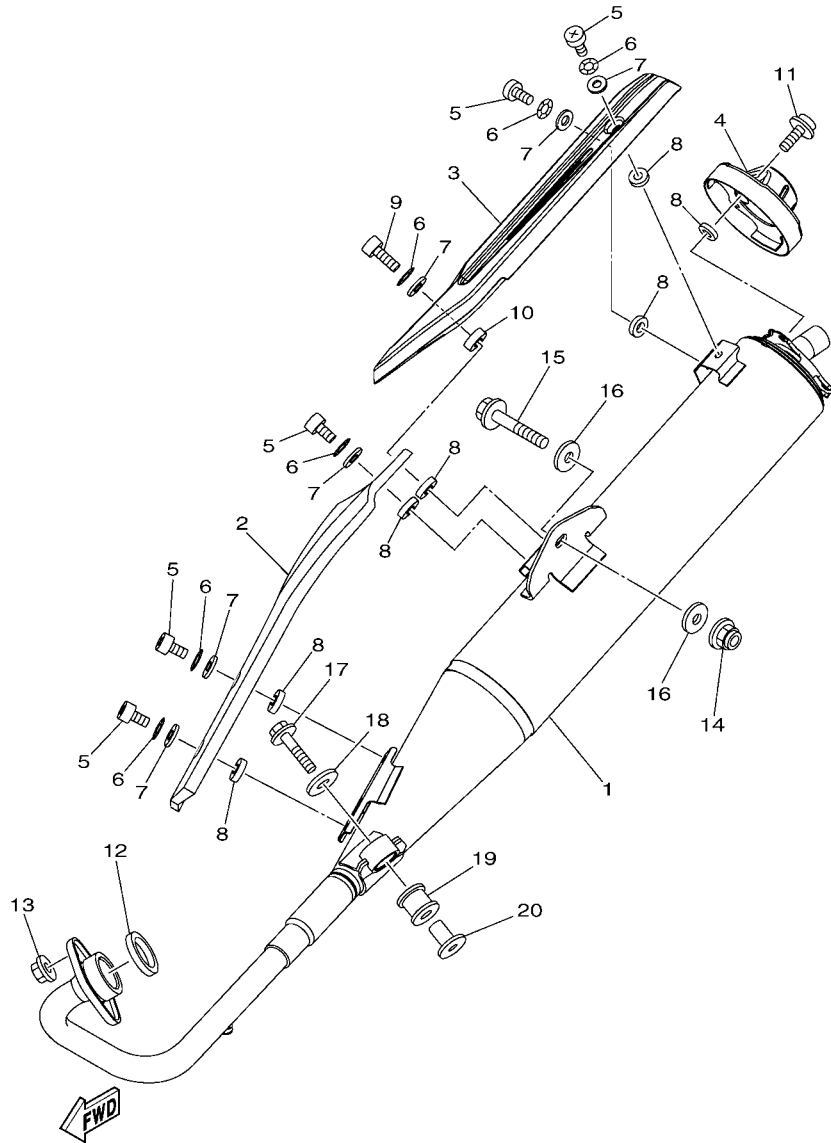


FIG. 9 CARBURETOR

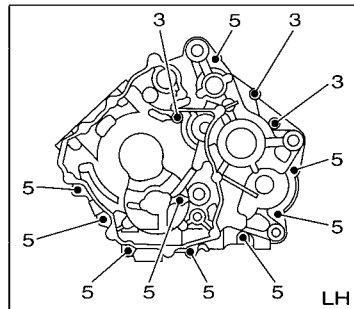
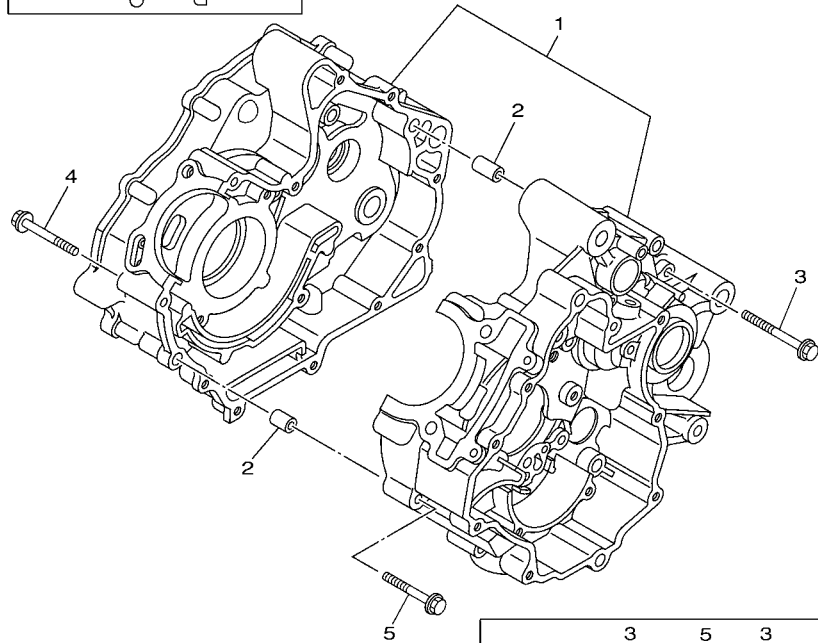
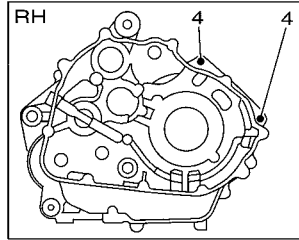
REF. NO.	PART NO.	DESCRIPTION	55D1				REMARKS
28	22F-14173-00	.COVER, PLUNGER CAP	1				
29	50C-14105-00	.PILOT SCREW SET	1				
30	5P0-14142-15	.JET, PILOT (# 15)	1				
31	4JG-14261-00	.HOLDER	1				
32	33S-14280-00	.COVER, CARBURETOR	1				
33	5HK-14275-00	.SPRING	1				
34	5AP-14940-00	.DIAPHRAGM ASSY	1				
35	5FC-14149-00	.PIPE	1				
36	5LW-14147-00	.O-RING	1				
37	5P0-14141-13	.NOZZLE, MAIN	1				
38	5LW-14171-10	.PLUNGER, STARTER	1				
39	50C-14137-00	.CLIP	1				



55S1460-K100

FIG. 10 EXHAUST

REF. NO.	PART NO.	DESCRIPTION	55D1				REMARKS
1	55D-E4703-00	MUFFLER COMP. 1	1				
2	55C-E4718-00	PROTECTOR, MUFFLER 1	1				
3	55C-E4728-00	PROTECTOR, MUFFLER 2	1				
4	55C-E4787-00	CAP, SILENCER	1				
5	98980-06010	SCREW, BIND	5				
6	90206-06090	WASHER, WAVE	6				
7	90202-05187	WASHER, PLATE	6				
8	90202-05188	WASHER, PLATE	9				
9	98980-06014	SCREW, BIND	1				
10	90387-061Y1	COLLAR	1				
11	90111-06802	BOLT, HEX. SOCKET BUTTON	3				
12	1S8-E4613-00	GASKET, EXHAUST PIPE	1				
13	95707-08500	NUT, FLANGE	2				
14	95707-10500	NUT, FLANGE	1				
15	95827-10045	BOLT, FLANGE	1				
16	90201-10141	WASHER, PLATE	2				
17	95807-08035	BOLT, FLANGE	1				
18	90201-08612	WASHER, PLATE	1				
19	29B-E4747-00	DAMPER, MUFFLER	1				
20	90387-08822	COLLAR	1				



5YP1431-D110

FIG. 11 CRANKCASE

REF. NO.	PART NO.	DESCRIPTION	55D1				REMARKS
1	1S8-E5150-00	CRANKCASE ASSY	1				
2	99530-10114	PIN, DOWEL	2				
3	9502L-06060	BOLT, FLANGE	3				
4	9502L-06050	BOLT, FLANGE	2				
5	9502L-06045	BOLT, FLANGE	9				

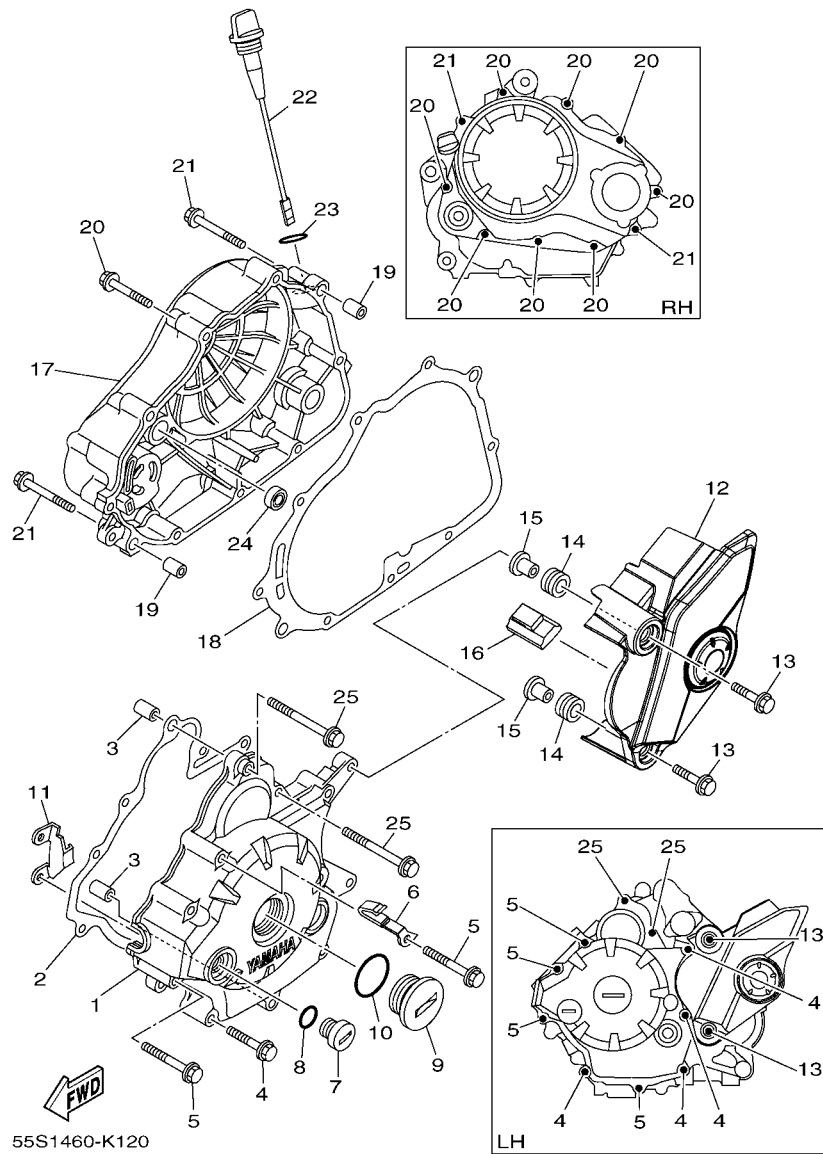
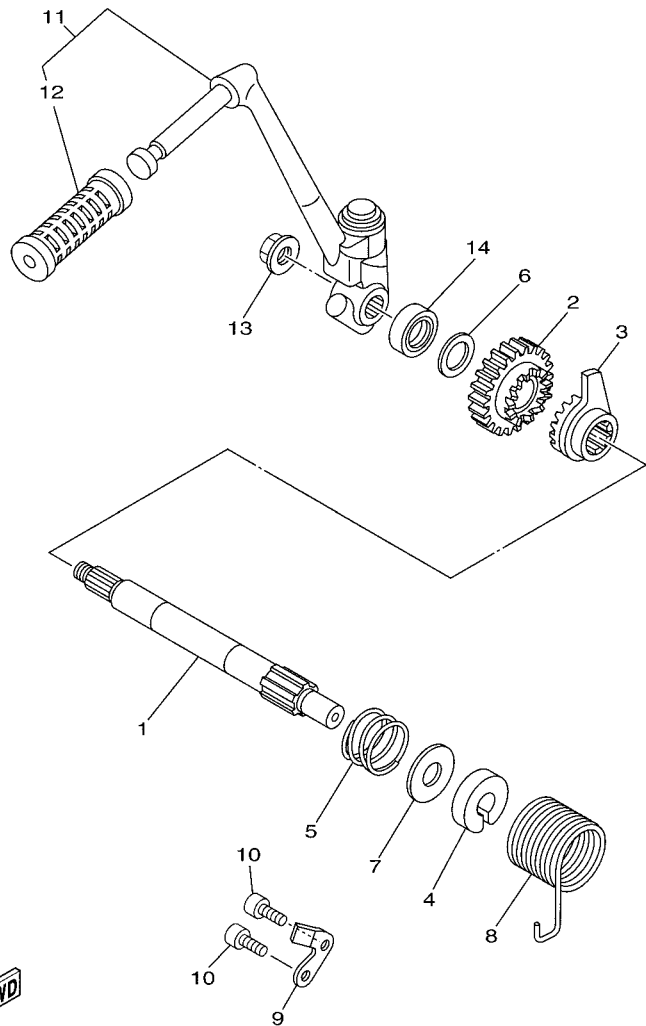


FIG. 12 CRANKCASE COVER 1

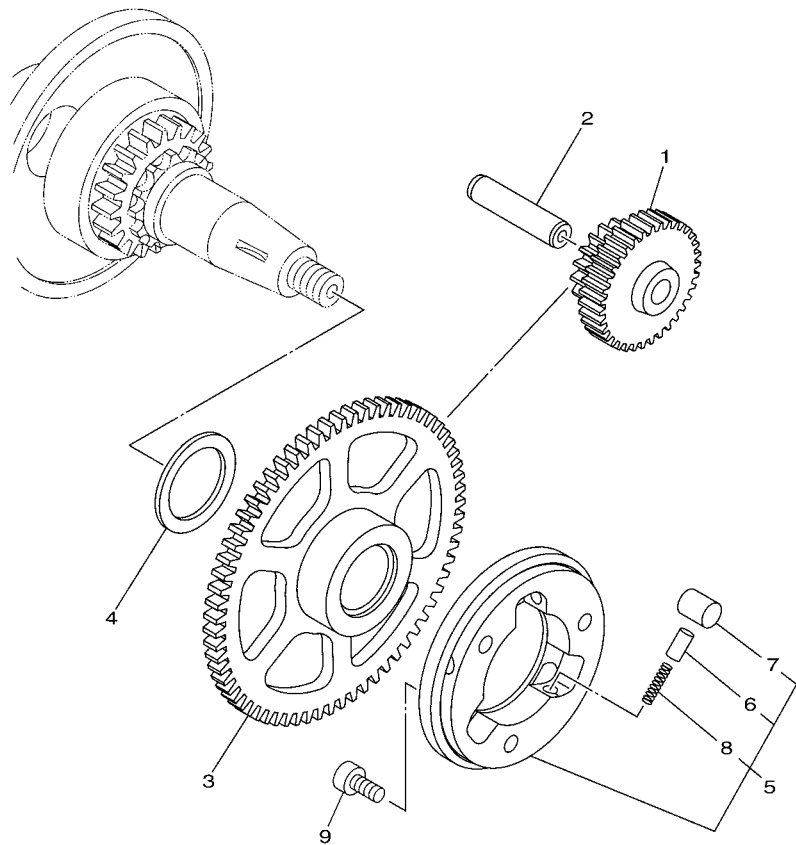
REF. NO.	PART NO.	DESCRIPTION	55D1				REMARKS
1	1S8-E5411-00	COVER, CRANKCASE 1	1				
2	55D-E5451-00	GASKET, CRANKCASE COVER 1	1				
3	99530-10114	PIN, DOWEL	2				
4	9502L-06040	BOLT, FLANGE	4				
5	9502L-06050	BOLT, FLANGE	4				
6	90462-08817	CLAMP	1				
7	90340-14812	PLUG, STRAIGHT SCREW	1				
8	93210-14899	O-RING	1				
9	90340-32815	PLUG, STRAIGHT SCREW	1				
10	93210-32803	O-RING	1				
11	5YP-E5113-00	PLATE	1				
12	55D-E5418-00	COVER, CHAIN CASE	1				
13	95807-06025	BOLT, FLANGE	2				
14	90480-13808	GROMMET	2				
15	90387-06063	COLLAR	2				
16	5YP-E5377-00	GUIDE, INLET	1				
17	1S8-E5421-00	COVER, CRANKCASE 2	1				
18	55D-E5461-00	GASKET, CRANKCASE COVER 2	1				
19	99530-10114	PIN, DOWEL	2				
20	9502L-06040	BOLT, FLANGE	8				
21	9502L-06050	BOLT, FLANGE	2				
22	1S8-E5362-00	PLUG, OIL LEVEL	1				
23	93210-198F0	O-RING	1				
24	93101-10841	OIL SEAL	1				
25	9502L-06060	BOLT, FLANGE	2				



5YP1431-D130

FIG. 13 STARTER

REF. NO.	PART NO.	DESCRIPTION	55D1				REMARKS
1	5YP-E5661-00	AXLE, KICK	1				
2	5YP-E5641-00	GEAR, KICK	1				
3	5YP-E5671-00	WHEEL, RATCHET	1				
4	5YP-E5664-00	GUIDE, SPRING	1				
5	5YP-E5767-00	SPRING	1				
6	90201-16803	WASHER, PLATE	1				
7	5YP-E5696-00	WASHER 2	1				
8	5YP-E5555-00	SPRING, RETURN	1				
9	5YP-E5674-00	GUID, RATCHET WHEEL	1				
10	91317-06016	BOLT	2				
11	1S8-E5620-00	KICK CRANK ASSY	1				
12	2N9-E5618-00	.COVER, KICK LEVER	1				
13	90179-10017	NUT	1				
14	93102-16800	OIL SEAL	1				



5YP1431-D140

FIG. 14 STARTER CLUTCH

REF. NO.	PART NO.	DESCRIPTION	55D1				REMARKS
1	5YP-E5514-00	GEAR 2	1				
2	1S8-E5521-00	SHAFT 1	1				
3	5YP-E5524-00	WHEEL, STARTER	1				
4	90201-25021	WASHER, PLATE	1				
5	5YP-E5580-00	STARTER CLUTCH OUTER ASSY	1				
6	5HV-E5583-00	.CAP, STARTER CLUTCH SPRING	3				
7	5YP-E5614-00	.PIN, DOWEL	3				
8	90501-030A0	.SPRING, COMPRESSION	3				
9	91317-06014	BOLT	3				

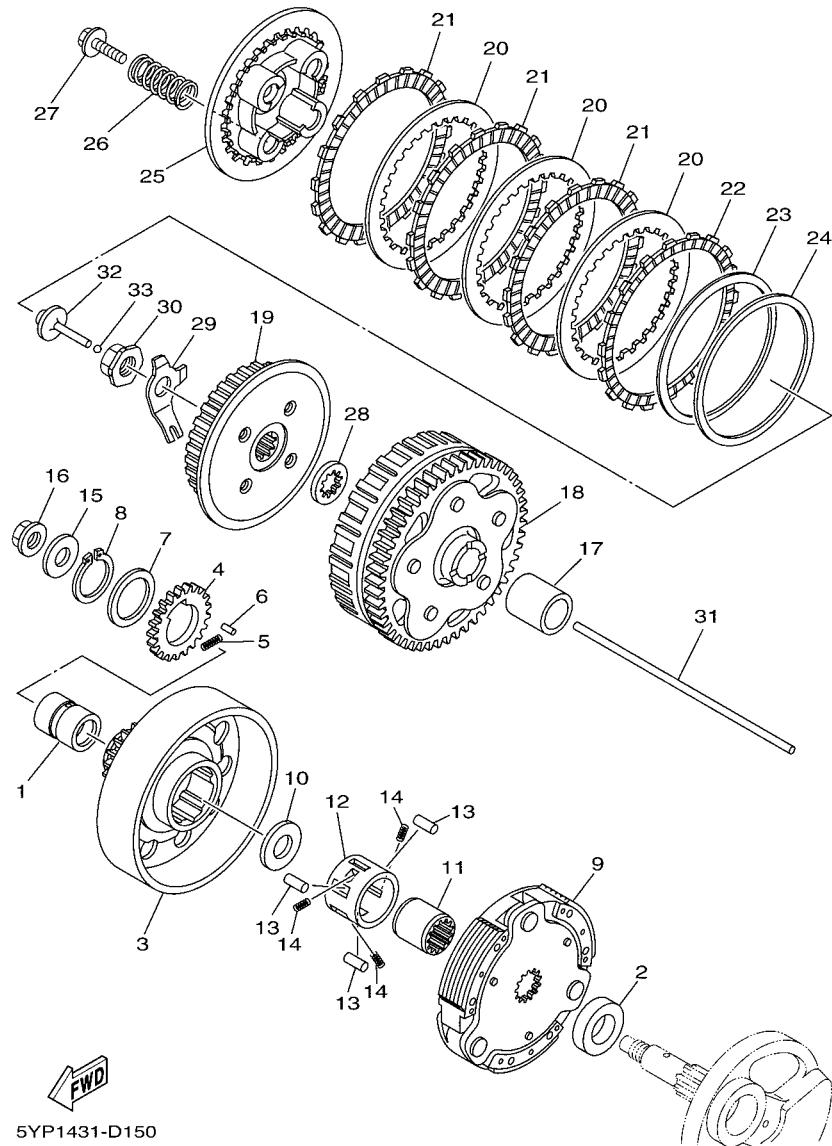


FIG. 15 CLUTCH

REF. NO.	PART NO.	DESCRIPTION	55D1				REMARKS
1	5YP-E6116-00	COLLAR 1	1				
2	5YP-E6182-00	SPACER 2	1				
3	5YP-E6611-00	CLUTCH HOUSING COMP.	1				
4	5YP-E6131-00	GEAR, PRIMARY DRIVE 2	1				
5	5YP-E6539-00	SPRING	1				
6	93602-08810	PIN, DOWEL	1				
7	5YP-E6144-00	WASHER	1				
8	99009-28400	CIRCLIP	1				
9	5YP-E6620-00	CLUTCH CARRIER ASSY	1				
10	90201-167P7	WASHER, PLATE	1				
11	5YP-E6512-00	BOSS, CLUTCH HOUSING	1				
12	5YP-E6586-00	CAGE	1				
13	5YP-E6143-00	PIN, ROLLER	3				
14	90501-04801	SPRING, COMPRESSION	3				
15	90201-12019	WASHER, PLATE	1				
16	90179-12659	NUT	1				
17	1S8-E6181-00	SPACER 1	1				
18	5YP-E6150-00	PRIMARY DRIVEN GEAR COMP.	1				
19	5YP-E6371-00	BOSS, CLUTCH	1				
20	5YP-E6324-00	PLATE, CLUTCH 1	3				
21	5YP-E6321-00	PLATE, FRICTION	3				
22	5YP-E6331-00	PLATE, FRICTION 2	1				
23	5YP-E6383-00	SPRING, CUSHION	1				
24	5YP-E6384-00	PLATE, SEAT	1				
25	5YP-E6351-00	PLATE, PRESSURE 1	1				
26	5YP-E6333-00	SPRING, CLUTCH 1	4				
27	5YP-E6777-00	BOLT	4				

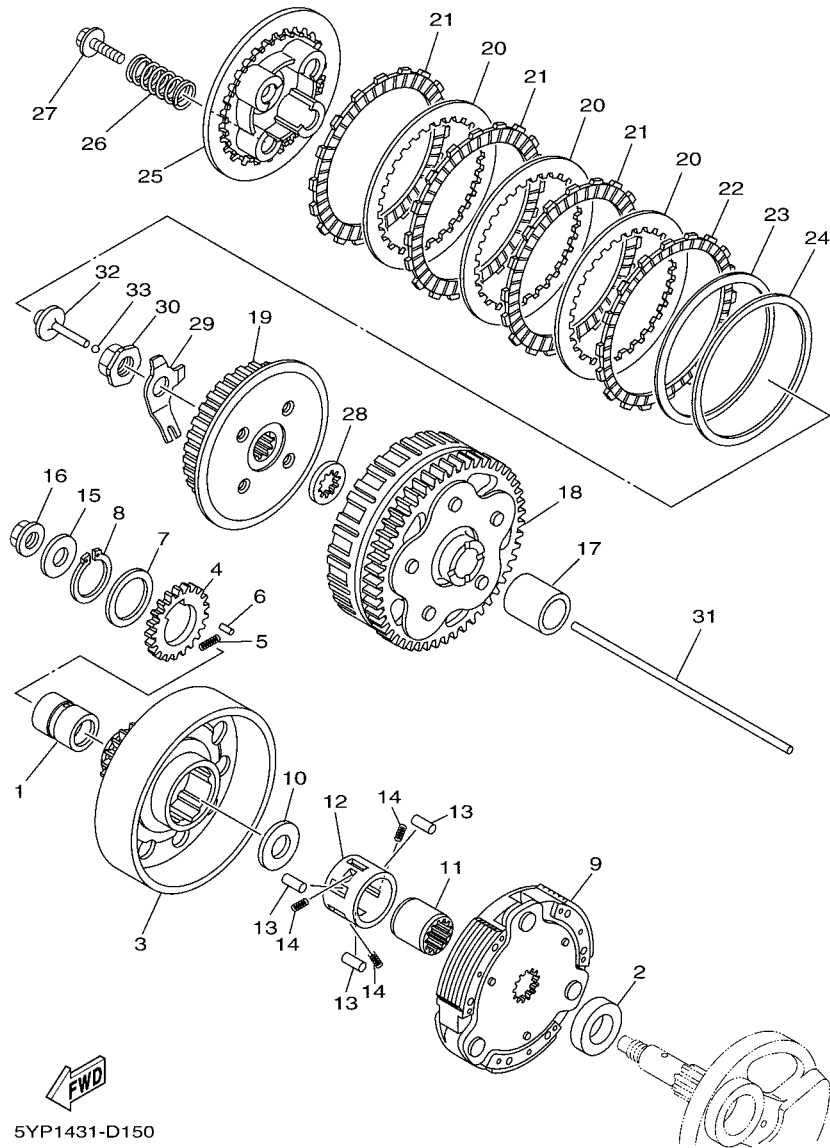
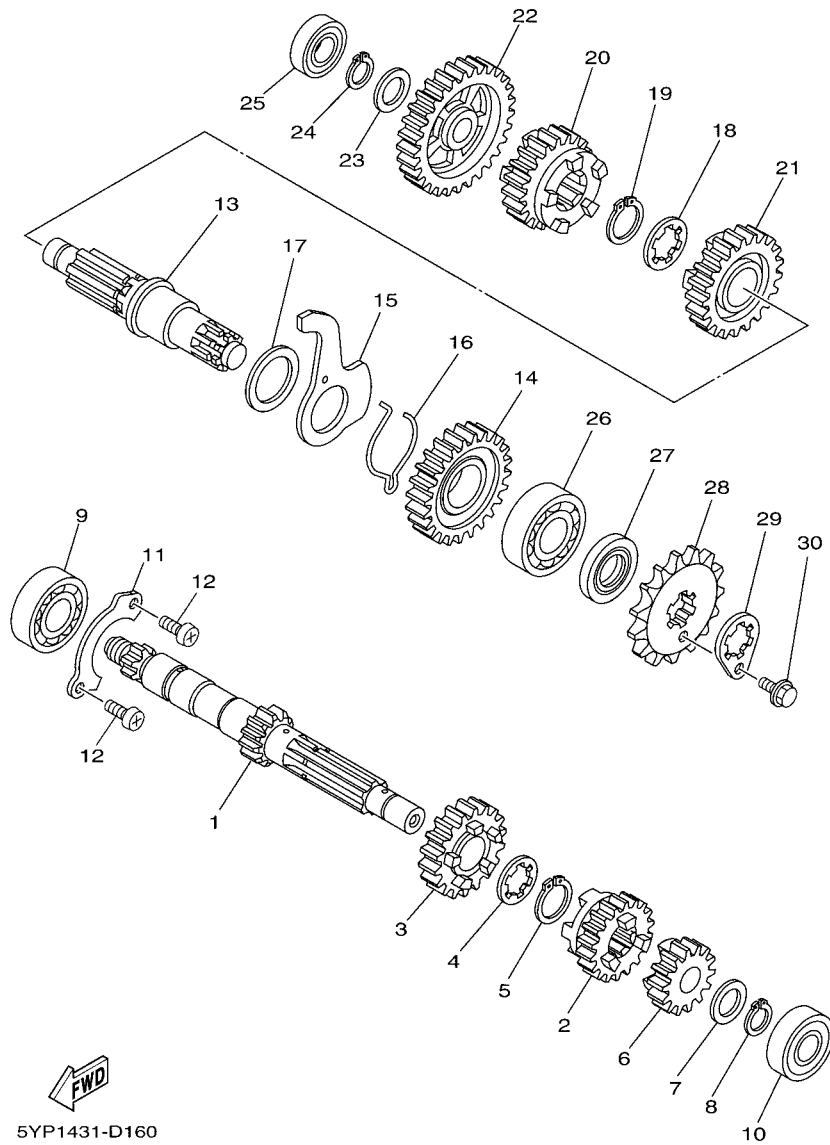


FIG. 15 CLUTCH

REF. NO.	PART NO.	DESCRIPTION	55D1				REMARKS
28	5YP-E6628-00	WASHER	1				
29	1S8-E6135-00	WASHER, LOCK	1				
30	90179-14001	NUT	1				
31	5YP-E6357-00	ROD, PUSH 2	1				
32	5YP-E6356-00	ROD, PUSH 1	1				
33	93503-16807	BALL	1				
<hr/>							
<hr/>							
<hr/>							
<hr/>							
<hr/>							
<hr/>							
<hr/>							
<hr/>							
<hr/>							
<hr/>							

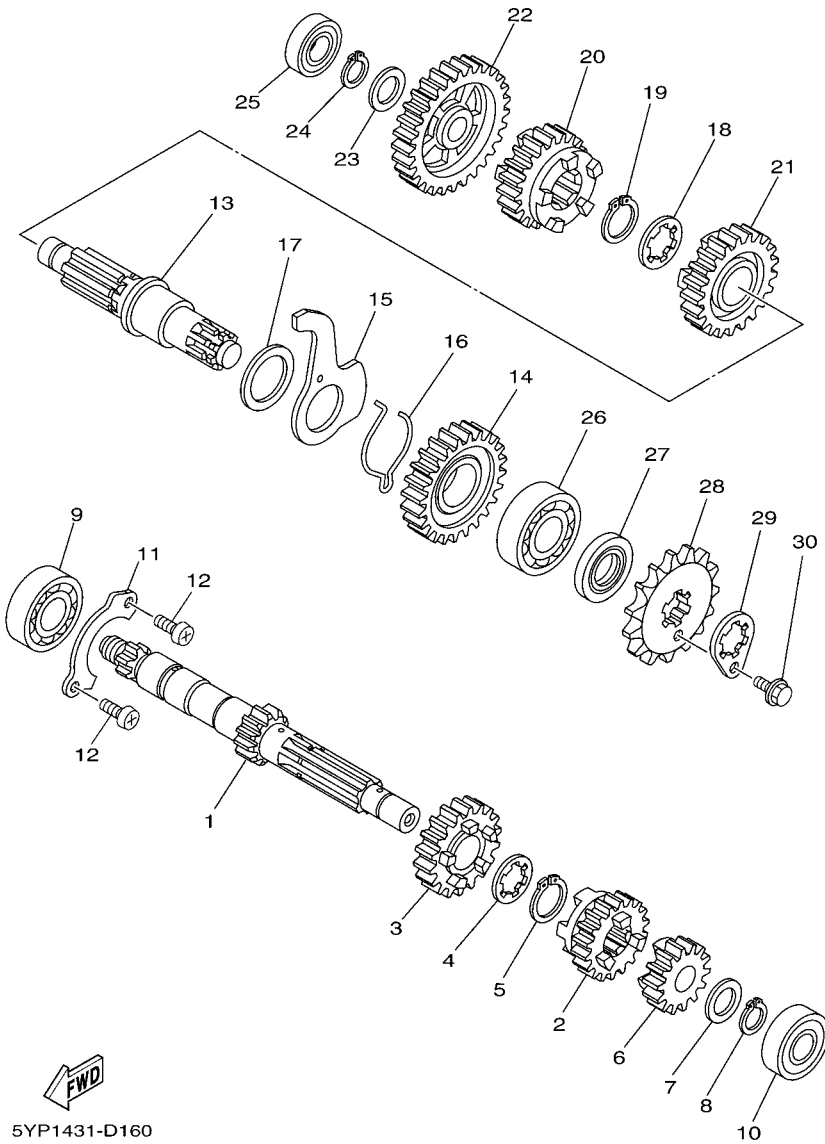


5YP1431-D160

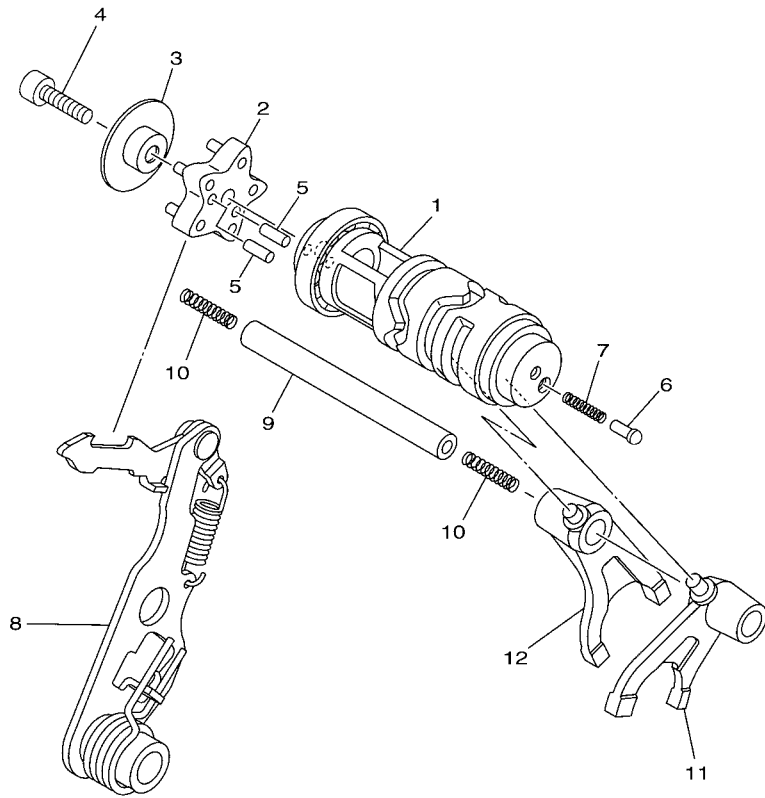
FIG. 16 TRANSMISSION

REF. NO.	PART NO.	DESCRIPTION	55DT				REMARKS
1	5YP-E7411-00	AXLE, MAIN (12T)	1				
2	5YP-E7131-00	GEAR, 3RD PINION (17T)	1				
3	5YP-E7141-00	GEAR, 4TH PINION (22T)	1				
4	90209-17285	WASHER	1				
5	93410-20809	CIRCLIP	1				
6	5YP-E7121-00	GEAR, 2ND PINION (16T)	1				
7	90201-15700	WASHER, PLATE	1				
8	99009-15400	CIRCLIP	1				
9	93306-004XR	BEARING	1				
10	93306-252X1	BEARING	1				
11	1S8-E7471-00	PLATE, COVER	1				
12	98517-06012	SCREW, PAN HEAD	2				
13	5YP-E7421-00	AXLE, DRIVE	1				
14	5YP-E7221-00	GEAR, 2ND WHEEL (30T)	1				
15	5YP-E8561-00	PLATE, SIDE 1	1				
16	5TN-E8545-00	SPRING	1				
17	90201-26802	WASHER, PLATE	1				
18	90209-18208	WASHER	1				
19	93410-22820	CIRCLIP	1				
20	5YP-E7241-00	GEAR, 4TH WHEEL (23T)	1				
21	5YP-E7231-00	GEAR, 3RD WHEEL (23T)	1				
22	5YP-E7211-00	GEAR, 1ST WHEEL (34T)	1				
23	90201-15700	WASHER, PLATE	1				
24	99009-15400	CIRCLIP	1				
25	93306-002X8	BEARING	1				
26	93306-204YL	BEARING	1				
27	93102-20881	OIL SEAL	1				

FIG. 16 TRANSMISSION



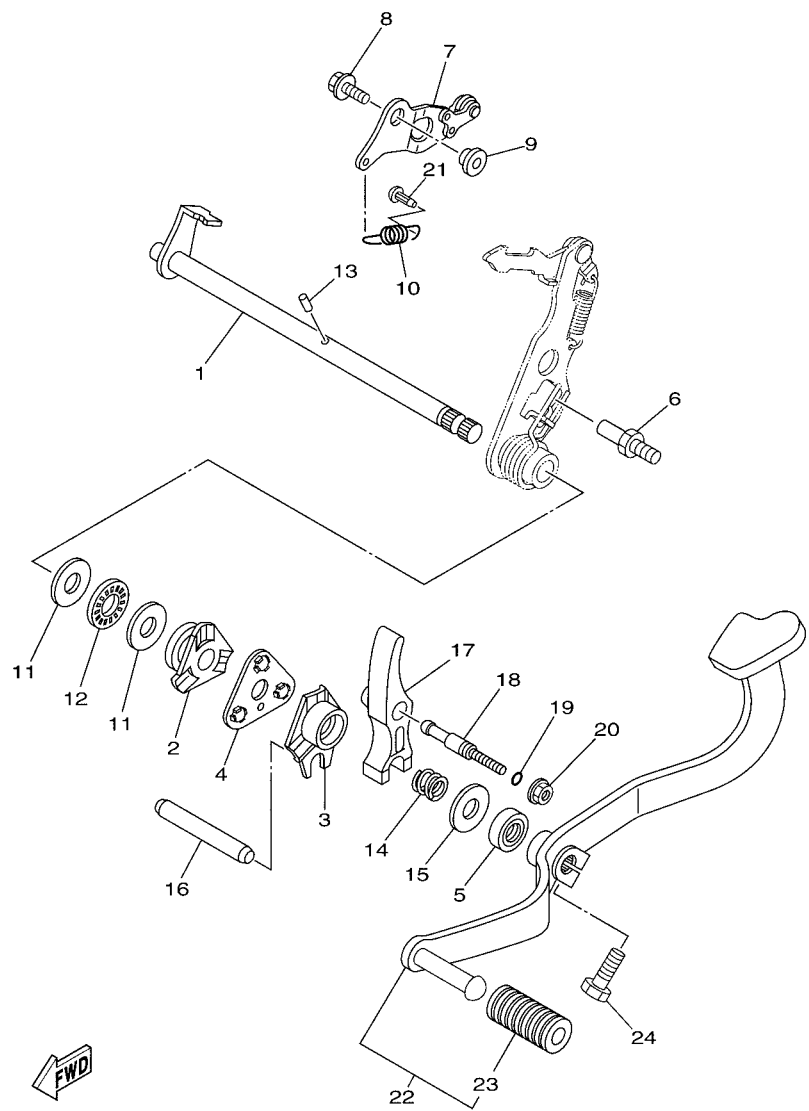
REF. NO.	PART NO.	DESCRIPTION	55D1				REMARKS
28	93822-15811	SPROCKET, DRIVE (15T)	1				
29	1S8-E7456-00	HOLDER, SPROCKET	1				
30	95027-06010	BOLT, FLANGE	1				



5YP1431-D170

FIG. 17 SHIFT CAM & FORK

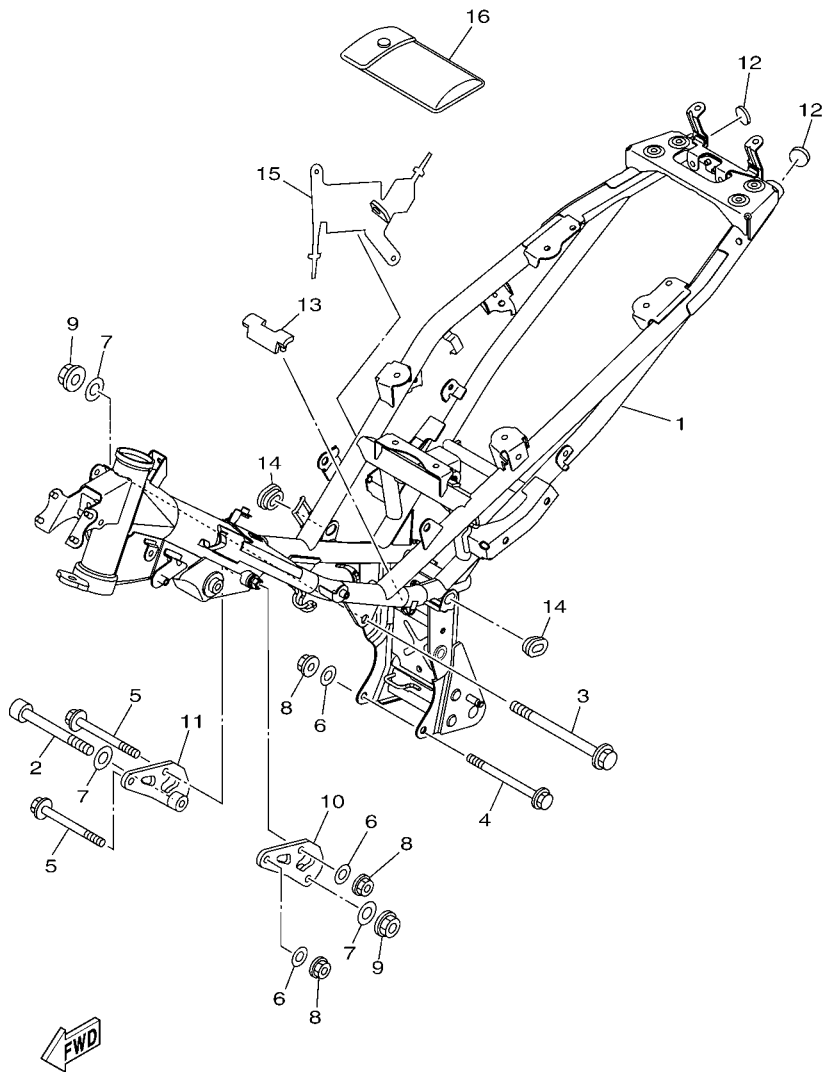
REF. NO.	PART NO.	DESCRIPTION	55D1				REMARKS
1	5YP-E8540-00	SHIFT CAM ASSY	1				
2	5YP-E8185-00	SEGMENT	1				
3	5YP-E8549-00	STOPPER	1				
4	91317-06025	BOLT	1				
5	93604-12831	PIN, DOWEL	2				
6	4TT-E8542-00	POINT, NEUTRAL	1				
7	90501-06022	SPRING, COMPRESSION	1				
8	5YP-E8120-00	SHIFT LEVER ASSY	1				
9	1S8-E8531-00	BAR, SHIFT FORK GUIDE 1	1				
10	90501-06800	SPRING, COMPRESSION	2				
11	5YP-E8511-00	FORK, SHIFT 1	1				
12	5YP-E8512-00	FORK, SHIFT 2	1				



5YP1431-D180

FIG. 18 SHIFT SHAFT

REF. NO.	PART NO.	DESCRIPTION	55D1				REMARKS
1	5YP-E8101-00	SHIFT SHAFT ASSY	1				
2	5YP-E8179-00	GUIDE	1				
3	5YP-E8172-00	GUIDE, SHIFT	1				
4	5YP-E8181-00	HOLDER, PAWL	1				
5	93102-12883	OIL SEAL	1				
6	5YP-E8127-00	STOPPER, SCREW	1				
7	5YP-E8140-00	STOPPER LEVER ASSY	1				
8	95827-06014	BOLT, FLANGE	1				
9	5YP-E8175-00	SPACER	1				
10	5YP-E8337-00	SPRING	1				
11	90201-12817	WASHER, PLATE	2				
12	93340-212Y2	BEARING	1				
13	93604-10837	PIN, DOWEL	1				
14	90501-125E9	SPRING, COMPRESSION	1				
15	90201-126A7	WASHER, PLATE	1				
16	1S8-E8173-00	PIN, SHIFT	1				
17	1S8-E817A-00	ARM, SHIFT 3	1				
18	5YP-E8186-00	SCREW, ADJUSTING	1				
19	93210-068E9	O-RING	1				
20	95707-06500	NUT, FLANGE	1				
21	5HV-E6346-00	HOOK, SPRING	1				
22	1S8-E8110-00	SHIFT PEDAL ASSY	1				
23	5H3-E8113-00	.COVER, SHIFT PEDAL	1				
24	97027-08020	BOLT, HEXAGON	1				



1S9A422-K190

FIG. 19 FRAME

REF. NO.	PART NO.	DESCRIPTION	55D1				REMARKS
1	55D-F1110-00	FRAME COMP.	1				
2	91317-10100	BOLT	1				
3	90105-10861	BOLT, FLANGE	1				
4	90105-088D9	BOLT, FLANGE	1				
5	90105-088D8	BOLT, FLANGE	2				
6	90201-08804	WASHER, PLATE	3				
7	90201-101J1	WASHER, PLATE	3				
8	90179-08818	NUT	3				
9	90179-10811	NUT	2				
10	1S8-F1315-00	STAY, ENGINE 2	1				
11	1S8-F1316-00	STAY, ENGINE 3	1				
12	1S8-F139R-00	COVER 2	2				
13	1S8-F139X-00	DAMPER	1				
14	90480-01868	GROMMET	2				
15	1S8-F117G-00	PROTECTOR	1				
16	1S8-F8100-00	TOOL KIT	1				

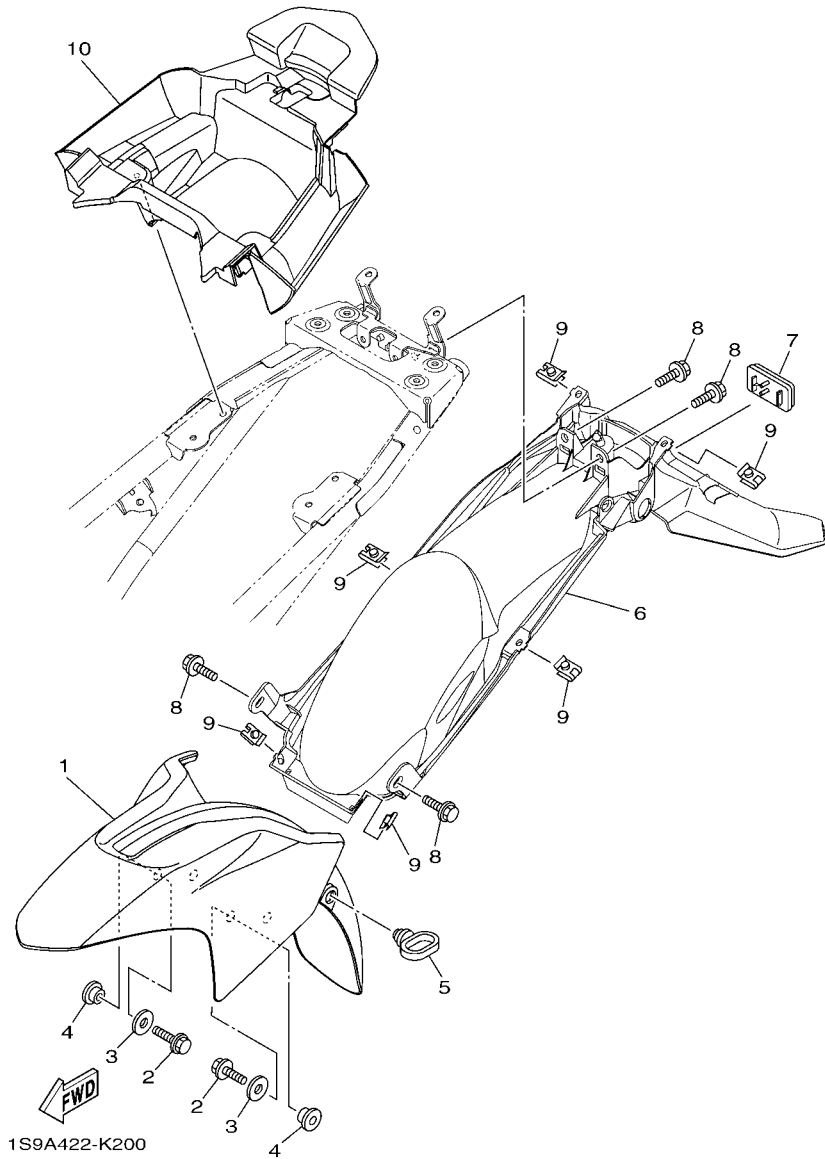


FIG. 20 FENDER

REF. NO.	PART NO.	DESCRIPTION	55D1				REMARKS
1	55C-F1511-00-P0	FENDER, FRONT	1				UR FOR SMX
	55C-F1511-00-P2	FENDER, FRONT	1				UR FOR RM7
	55C-F1511-00-P1	FENDER, FRONT	1				UR FOR BWC1
2	95827-06016	BOLT, FLANGE	4				
3	90201-06072	WASHER, PLATE	4				
4	90387-06804	COLLAR	4				
5	15K-F1518-00	HOLDER, CABLE	1				
6	55C-F1611-00	FENDER, REAR	1				
7	4XC-H5111-00	REFLECTOR, FRONT 1	1				
8	90119-06044	BOLT, WITH WASHER	4				
9	90183-05042	NUT, SPRING	6				
10	55C-F160E-00	BOX	1				

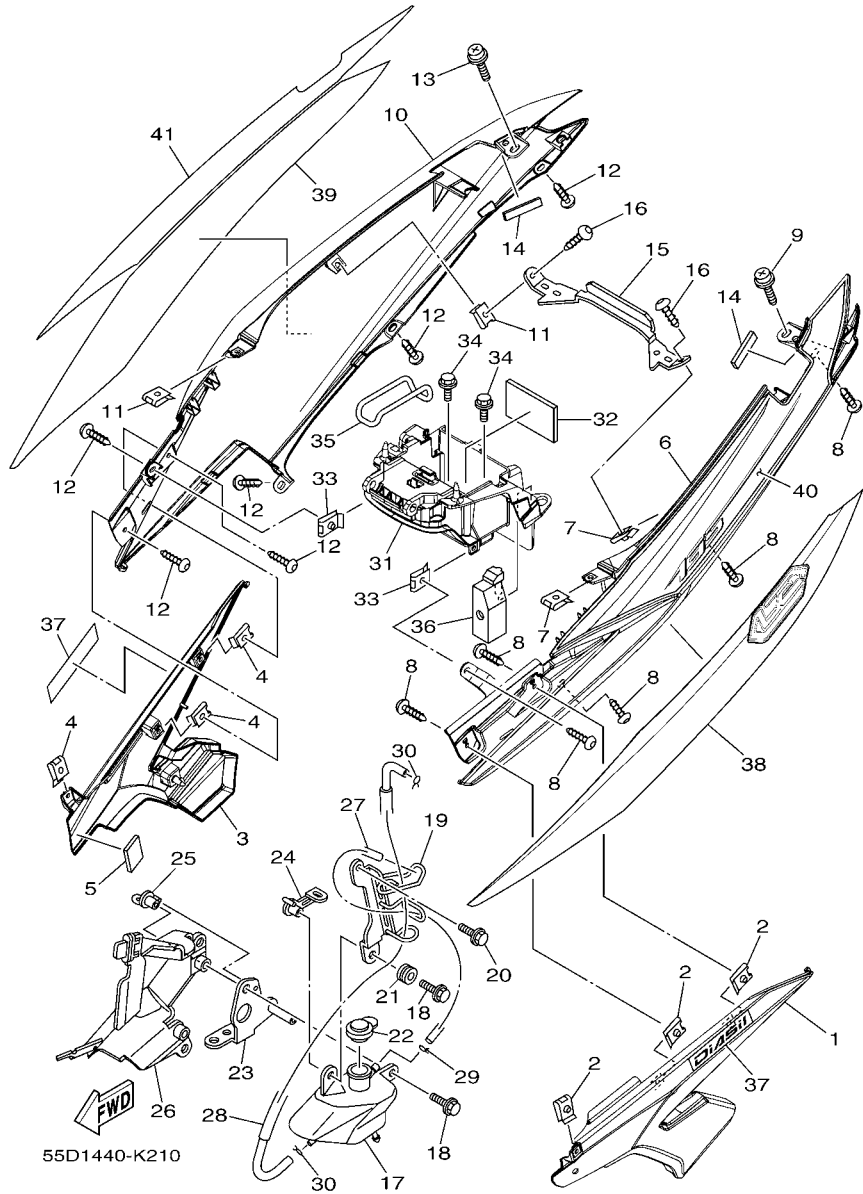


FIG. 21 SIDE COVER

REF. NO.	PART NO.	DESCRIPTION	55D1			REMARKS
1	55C-F1711-00-P2	COVER, SIDE 1	1			FOR SMX,RM7,BWC1
2	90183-05042	NUT, SPRING	3			
3	55C-F1721-00-P2	COVER, SIDE 2	1			FOR SMX,RM7,BWC1
4	90183-05042	NUT, SPRING	3			
5	90520-02806	DAMPER, PLATE	1			
6	55C-F1731-00-P0	COVER, SIDE 3	1			UR FOR SMX
	55C-F1731-00-P2	COVER, SIDE 3	1			UR FOR RM7
	55C-F1731-00-P1	COVER, SIDE 3	1			UR FOR BWC1
7	90183-05042	NUT, SPRING	2			
8	97707-50012	SCREW, TRUSS HEAD TAPPING	6			
9	90159-06181	SCREW, WITH WASHER	1			
10	55C-F1741-00-P0	COVER, SIDE 4	1			UR FOR SMX
	55C-F1741-00-P2	COVER, SIDE 4	1			UR FOR RM7
	55C-F1741-00-P1	COVER, SIDE 4	1			UR FOR BWC1
11	90183-05042	NUT, SPRING	2			
12	97707-50012	SCREW, TRUSS HEAD TAPPING	6			
13	90159-06181	SCREW, WITH WASHER	1			
14	90520-04806	DAMPER, PLATE	2			
15	55C-F172E-00	STAY, SIDE COVER 1	1			
16	97707-50012	SCREW, TRUSS HEAD TAPPING	2			
17	5YP-F1871-00	TANK, RECOVERY	1			
18	90119-06044	BOLT, WITH WASHER	2			
19	5YP-F172K-00	BRACKET 1	1			
20	95807-06020	BOLT, FLANGE	1			
21	90480-13805	GROMMET	1			
22	5YP-F1875-00	CAP	1			
23	1S8-F172L-00	BRACKET 2	1			

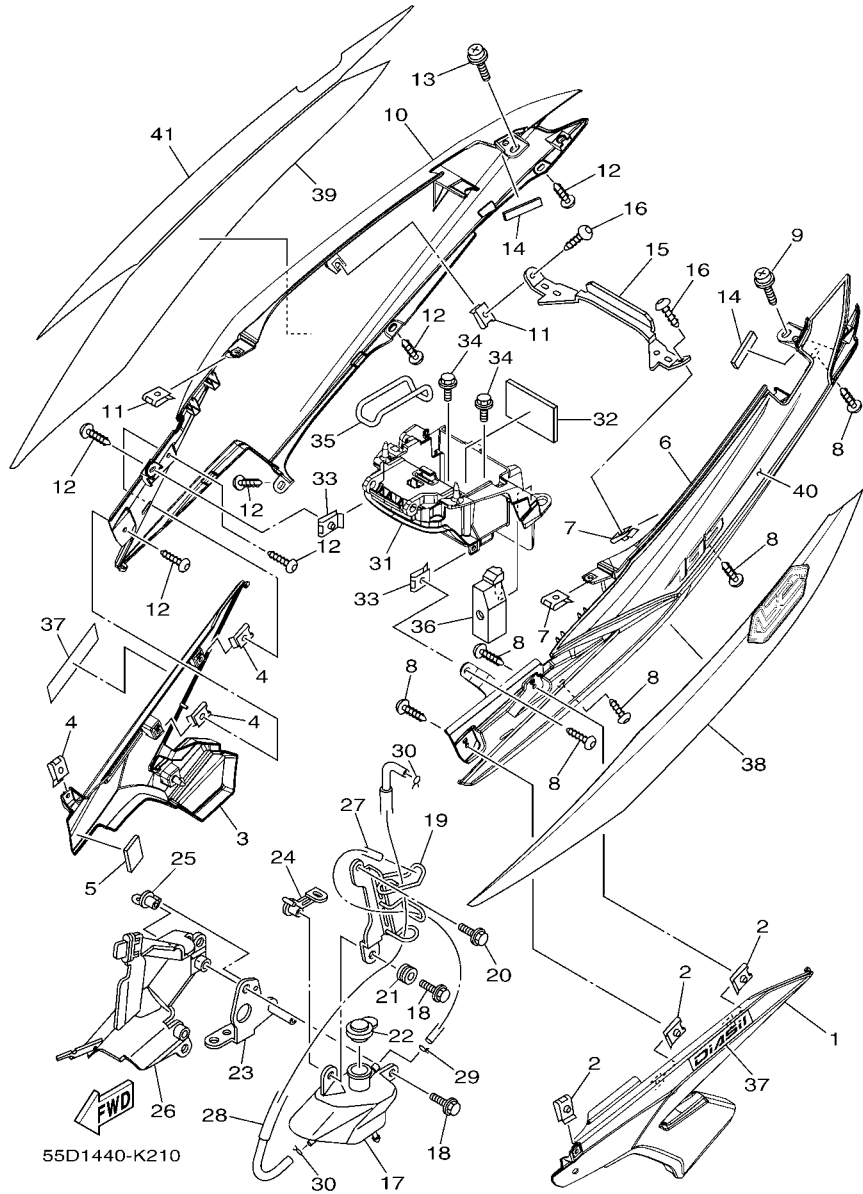
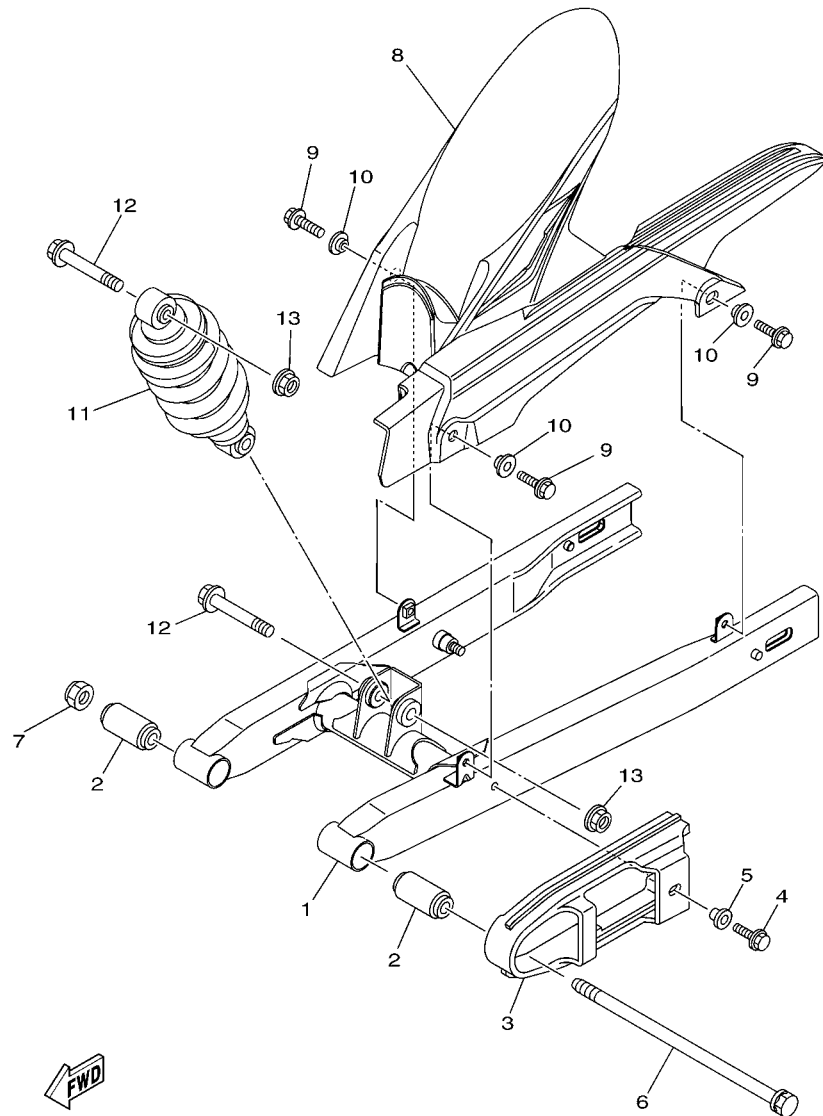


FIG. 21 SIDE COVER

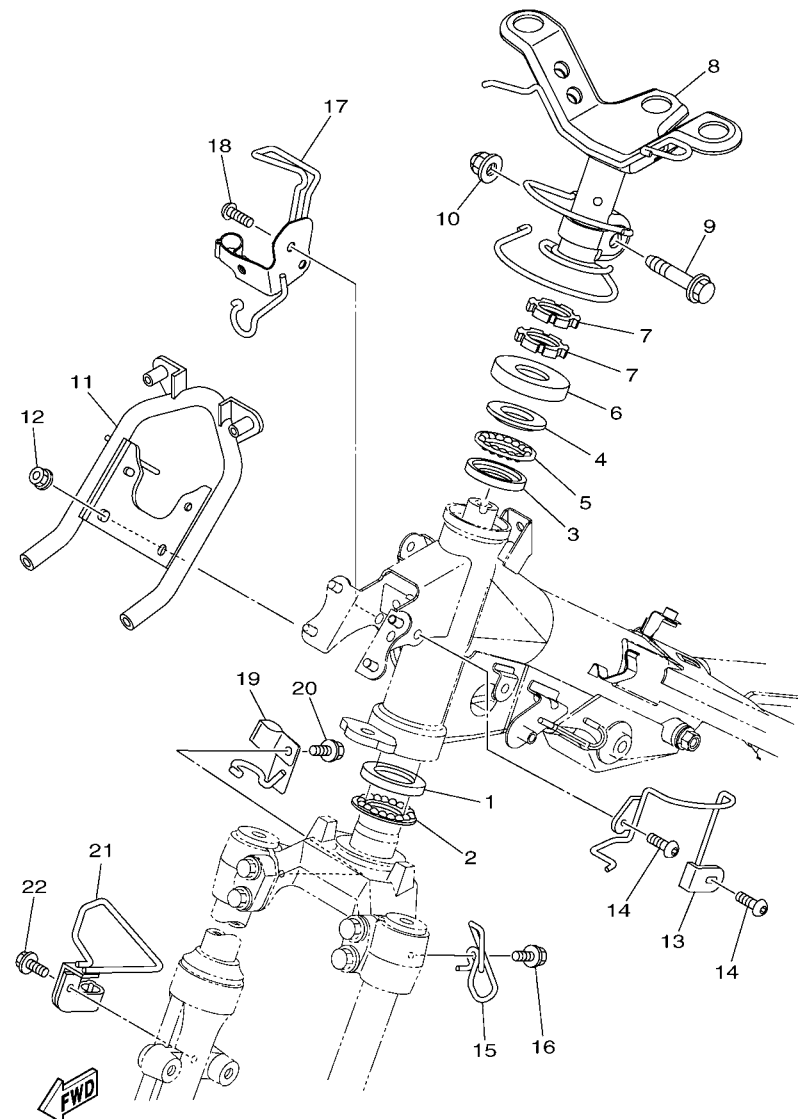
REF. NO.	PART NO.	DESCRIPTION	55D1				REMARKS
24	5YP-F172M-00	BRACKET 3	1				
25	50C-F1173-00	BOSS, WIRE HOLDER	1				
26	1S8-F172W-00	COVER	1				
27	90445-09823	HOSE	1				
28	55C-F1817-00	PIPE 2	1				
29	90467-08003	CLIP	1				
30	90467-09006	CLIP	2				
31	55C-F177G-00	BOX, BATTERY	1				
32	90520-02807	DAMPER, PLATE	1				
33	90183-05042	NUT, SPRING	2				
34	90119-06044	BOLT, WITH WASHER	2				
35	5VW-H2131-00	BAND, BATTERY	1				
36	1S8-E4293-00	COVER 1	1				
37	55D-F1781-00	EMBLEM, 1	2				UR FOR SMX, RM7
	55D-F1781-10	EMBLEM, 1	2				UR FOR BWC1
38	55D-F173E-00	GRAPHIC, 1	1				UR FOR SMX
	55D-F173E-10	GRAPHIC, 1	1				UR FOR RM7
	55D-F173E-20	GRAPHIC, 1	1				UR FOR BWC1
39	55D-F173F-00	GRAPHIC, 2	1				UR FOR SMX
	55D-F173F-10	GRAPHIC, 2	1				UR FOR RM7
	55D-F173F-20	GRAPHIC, 2	1				UR FOR BWC1
40	55D-F174G-00	GRAPHIC, 3	1				UR FOR SMX
	55D-F174G-10	GRAPHIC, 3	1				UR FOR RM7
	55D-F174G-20	GRAPHIC, 3	1				UR FOR BWC1
41	55D-F174H-00	GRAPHIC, 4	1				UR FOR SMX
	55D-F174H-10	GRAPHIC, 4	1				UR FOR RM7
	55D-F174H-20	GRAPHIC, 4	1				UR FOR BWC1



55S1460-K220

FIG. 22 REAR ARM & SUSPENSION

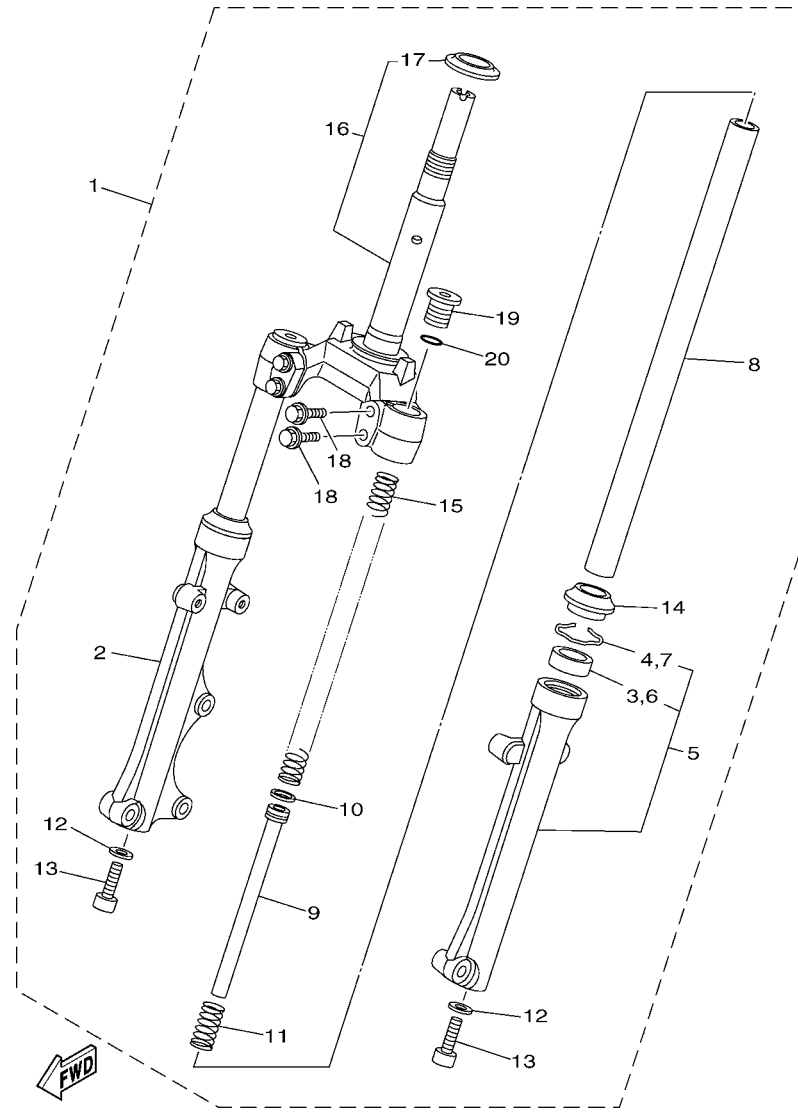
REF. NO.	PART NO.	DESCRIPTION	55D1				REMARKS
1	55D-F2110-00	REAR ARM COMP.	1				
2	4UL-F2123-00	BUSH 1	2				
3	1S8-F2151-00	SEAL, GUARD	1				
4	95807-06012	BOLT, FLANGE	1				
5	90387-06681	COLLAR	1				
6	50C-F2141-00	SHAFT, PIVOT	1				
7	95617-12100	NUT, U	1				
8	55D-F1650-00	REAR FENDER COMP.	1				
9	95827-06014	BOLT, FLANGE	3				
10	90387-07819	COLLAR	3				
11	55C-F2210-00	SHOCK ABSORBER ASSY, REAR	1				
12	90105-10323	BOLT, FLANGE	2				
13	95602-10200	NUT, U FLANGE	2				



50C1460-K230

FIG. 23 STEERING

REF. NO.	PART NO.	DESCRIPTION	55D1				REMARKS
1	156-23412-00	RACE, BALL 2	1				
2	5TL-2341E-00	RETAINER, BALL BEARING (16)	1				
3	22F-23412-01	RACE, BALL 2	1				
4	22F-23411-01	RACE, BALL 1	1				
5	5TL-2341E-10	RETAINER, BALL BEARING (19)	1				
6	5VV-F3416-00	COVER, BALL RACE 2	1				
7	90179-25802	NUT	2				
8	55C-F3461-00	BRACKET, HANDLE	1				
9	90105-10036	BOLT, FLANGE	1				
10	90185-10154	NUT, SELF-LOCKING	1				
11	55C-F331A-00	STAY	1				
12	95707-06500	NUT, FLANGE	4				
13	55C-F1161-00	HOLDER, CABLE	1				
14	92017-06010	BOLT, BUTTON HEAD	2				
15	55C-F3389-00	GUIDE, CABLE	1				
16	90119-06044	BOLT, WITH WASHER	1				
17	55C-F5875-00	HOLDER, BRAKE HOSE 1	1				
18	92017-06012	BOLT, BUTTON HEAD	3				
19	50C-F587A-00	HOLDER, BRAKE HOSE	1				
20	95807-06012	BOLT, FLANGE	1				
21	55C-F5876-00	HOLDER, BRAKE HOSE 2	1				
22	95807-06012	BOLT, FLANGE	1				



50C1460-K240

FIG. 24 FRONT FORK

REF. NO.	PART NO.	DESCRIPTION	55DT				REMARKS
1	55D-F3100-00	FRONT FORK ASSY	1				
2	1S9-F3136-30	.TUBE, OUTER (RIGHT)	1				
3	4UV-F3145-00	..OIL SEAL	1				
4	5P0-F3156-00	..RING, SNAP	1				
5	1S9-F3126-30	.TUBE, OUTER (LEFT)	1				
6	4UV-F3145-00	..OIL SEAL	1				
7	5P0-F3156-00	..RING, SNAP	1				
8	55C-F3110-00	.INNER TUBE COMP.1	2				
9	5P2-F3170-00	.CYLINDER COMP., FRONT FORK	2				
10	2JG-F3157-00	.RING, PISTON	2				
11	5TF-F3152-00	.SPRING, SUB	2				
12	509-F3158-L0	.GASKET	2				
13	31D-F3181-50	.BOLT, HEXAGON SOCKET HEAD	2				
14	5LL-F3144-00	.SEAL, DUST	2				
15	50C-F3141-00	.SPRING, FRONT FORK	2				
16	50C-F3340-00	..UNDER BRACKET COMP.	1				
17	49P-F3411-00	..RACE, BALL 1	1				
18	4D0-F3346-00	.BOLT 1	4				
19	4VK-F3111-10	.BOLT, CAP	2				
20	2JG-F3147-00	.O-RING	2				

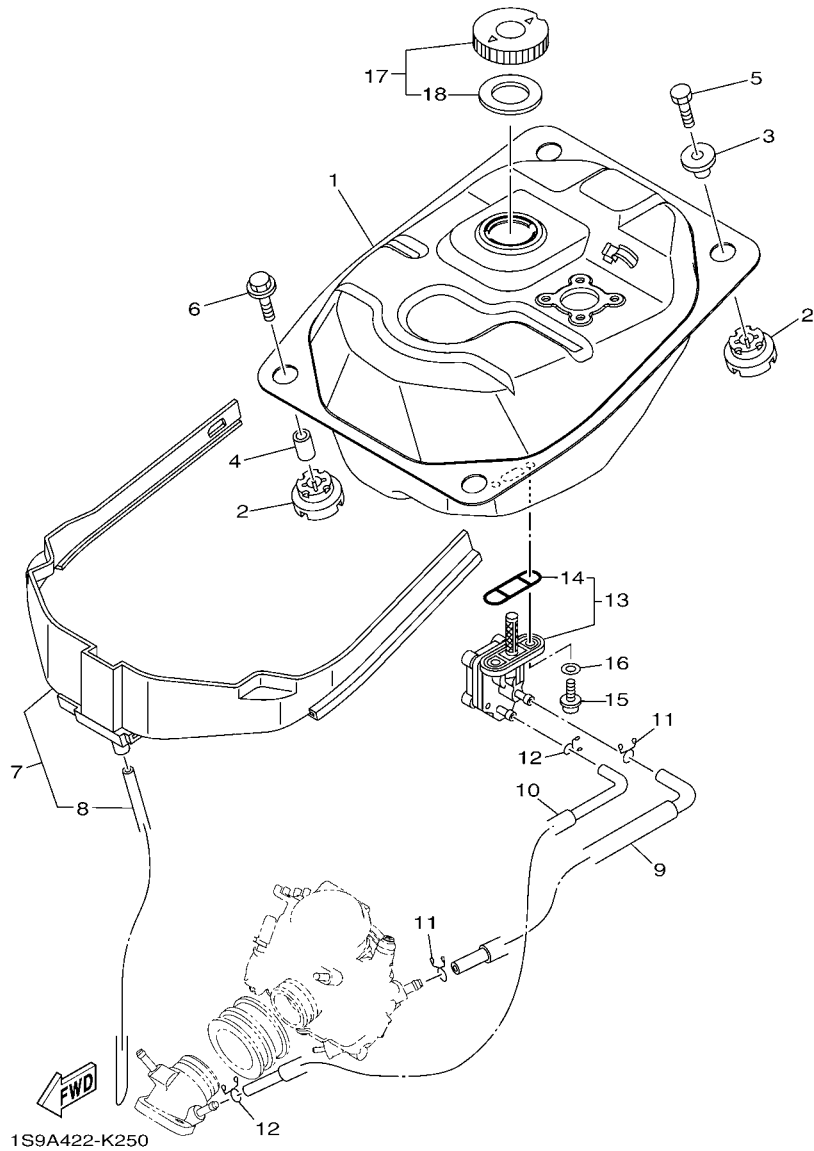


FIG. 25 FUEL TANK

REF. NO.	PART NO.	DESCRIPTION	55D1				REMARKS
1	1S8-F4110-00	FUEL TANK COMP.	1				
2	1S8-F4339-00	GROMMET	4				
3	1S8-F4638-00	COLLAR	2				
4	1S8-F4397-00	COLLAR	2				
5	97007-06025	BOLT	2				
6	90119-06190	BOLT, WITH WASHER	2				
7	21S-F4141-00	PROTECTOR, FUEL TANK	1				
8	90445-07812	.HOSE	1				
9	55C-F4311-00	PIPE, FUEL 1	1				
10	55C-F4312-00	PIPE 2	1				
11	90467-09006	CLIP	2				
12	90467-08075	CLIP	2				
13	5YP-F4500-00	FUEL COCK ASSY 1	1				
14	4X8-24512-00	.O-RING	1				
15	90149-06011	SCREW	2				
16	90202-05193	WASHER, PLATE	2				
17	5LW-F4610-00	CAP ASSY	1				
18	5LW-F4612-00	.PACKING, CAP	1				
<hr/>							
<hr/>							
<hr/>							
<hr/>							

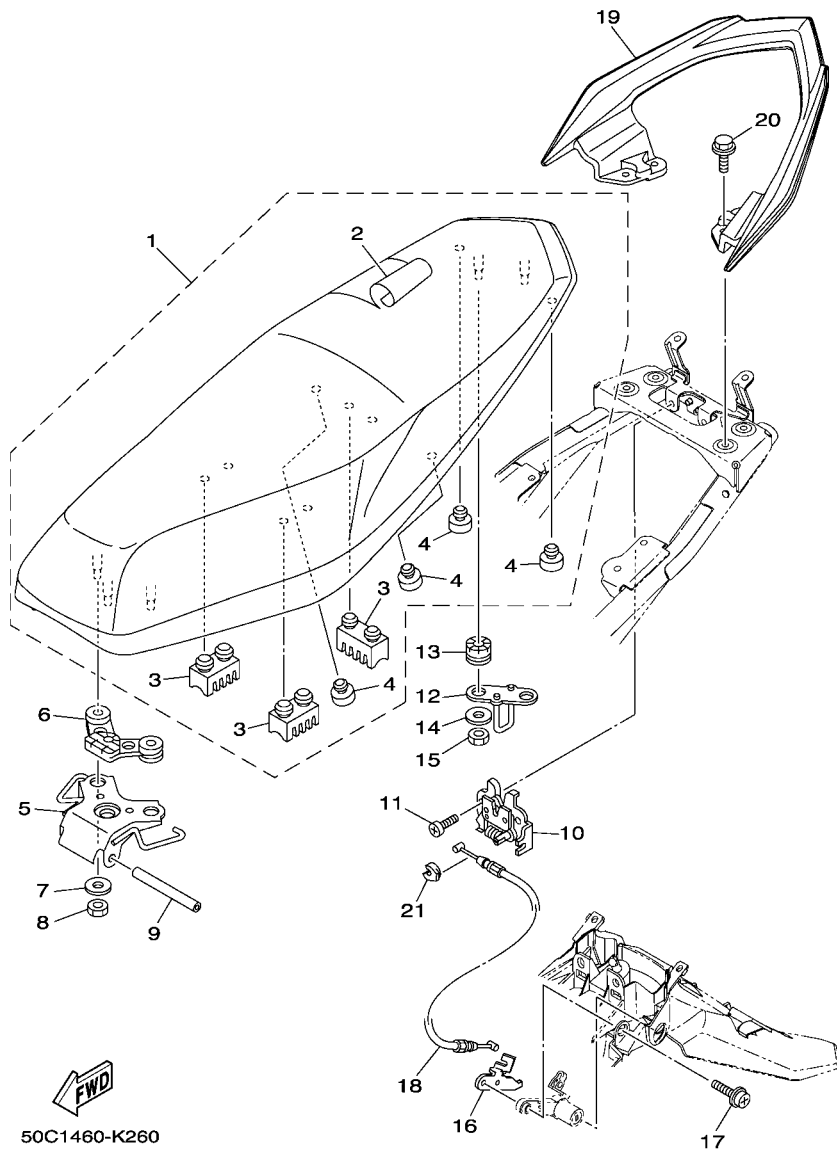
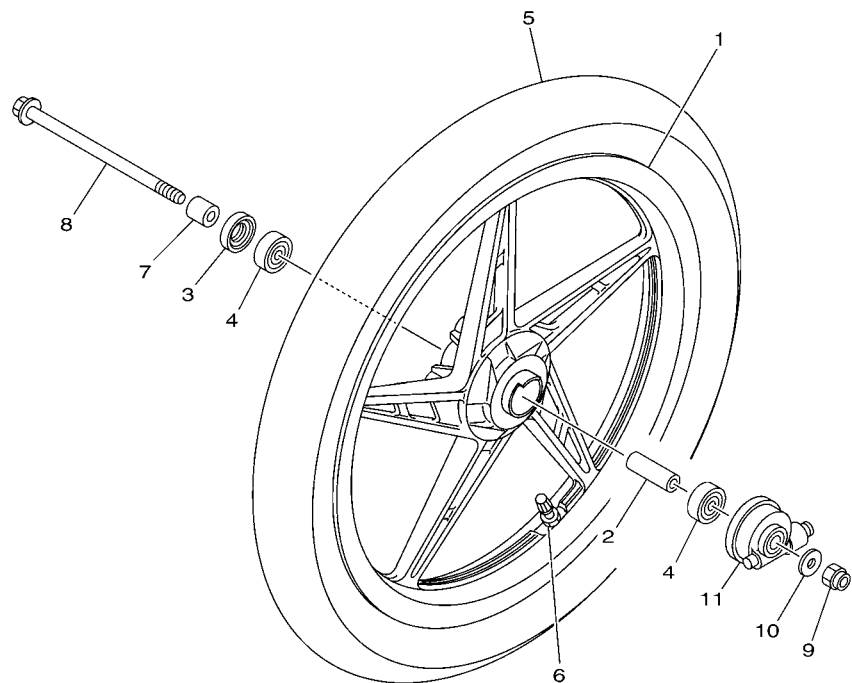


FIG. 26 SEAT

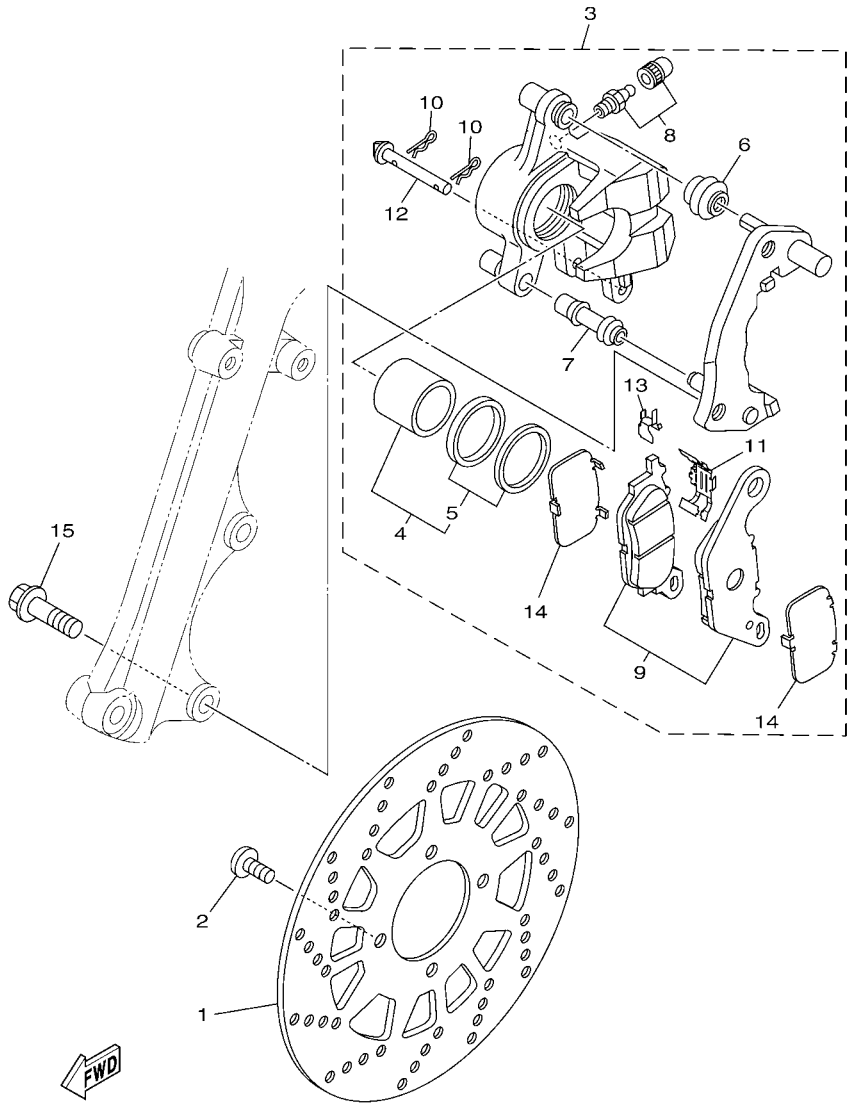
REF. NO.	PART NO.	DESCRIPTION	55D1				REMARKS
1	55D-F4730-00	DOUBLE SEAT ASSY	1				
2	55D-F470F-00	.SEAT COVER COMP.	1				
3	5TF-F4723-00	.DAMPER, SEAT	3				
4	4HF-F4741-00	.PAD, SEAT	4				
5	55C-F4726-00	HINGE, SEAT	1				
6	1S8-F4742-00	GROMMET	1				
7	90201-068N7	WASHER, PLATE	3				
8	95307-06600	NUT	3				
9	5VV-F4727-00	PIN, SEAT FITTING	1				
10	5P0-F4780-01	SEAT LOCK ASSY	1				
11	98507-06012	SCREW, PAN HEAD	2				
12	1S8-F4728-00	BRACKET, SEAT	1				
13	90480-14872	GROMMET	2				
14	90201-06071	WASHER, PLATE	2				
15	95307-06600	NUT	2				
16	55C-F117K-00	STAY, LOCK	1				
17	90159-06033	SCREW, WITH WASHER	1				
18	55C-F478E-10	CABLE, SEAT LOCK	1				
19	55C-F4773-00-P0	HANDLE, SEAT	1				UR FOR SMX
	55C-F4773-00-P2	HANDLE, SEAT	1				UR FOR RM7
	55C-F4773-00-P1	HANDLE, SEAT	1				UR FOR BWC1
20	95827-06020	BOLT, FLANGE	4				
21	1S8-F4768-00	STOPPER	1				

FIG. 27 FRONT WHEEL



REF. NO.	PART NO.	DESCRIPTION	55D1				REMARKS
1	1S8-F5168-00-P1	CAST WHEEL, FRONT	1				MT2
2	90560-10292	SPACER	1				
3	93106-20816	OIL SEAL	1				
4	93306-300X8	BEARING	2				
5	94107-17817	TIRE (70/90-17 38P)	1				VEE RUBBER
6	93900-00817	VALVE, RIM (TR412)	1				
7	90387-10277	COLLAR	1				
8	3NA-F5181-01	AXLE, WHEEL	1				
9	90185-10091	NUT, SELF-LOCKING	1				
10	90201-101J1	WASHER, PLATE	1				
11	5TN-F5190-01	GEAR UNIT ASSY	1				

 1S81440-E270



55D1440-K280

FIG. 28 FRONT BRAKE CALIPER

REF. NO.	PART NO.	DESCRIPTION	55D1				REMARKS
1	5TN-F582U-01	DISK, BRAKE (RIGHT)	1				
2	90109-084F7	BOLT	4				
3	44S-F580U-00	CALIPER ASSY (RIGHT)	1				
4	5P0-W0057-00	.PISTON ASSY, CALIPER	1				
5	5YP-W0047-50	..CALIPER SEAL KIT	1				
6	5YP-F5917-00	.BOOT, CALIPER	1				
7	5YP-F5937-00	.BOOT 2	1				
8	4C9-W0048-00	.BLEED SCREW KIT	1				
9	3C1-W0045-10	.BRAKE PAD KIT	1				
10	5YP-F5925-01	.CLIP	2				
11	5P0-F5919-00	.SUPPORT, PAD	1				
12	5YP-F5924-00	.PIN, PAD	1				
13	5YP-F5939-00	.CLIP, PAD	1				
14	5P0-F5827-00	.SHIM, CALIPER	2				
15	90105-10824	BOLT, FLANGE	2				

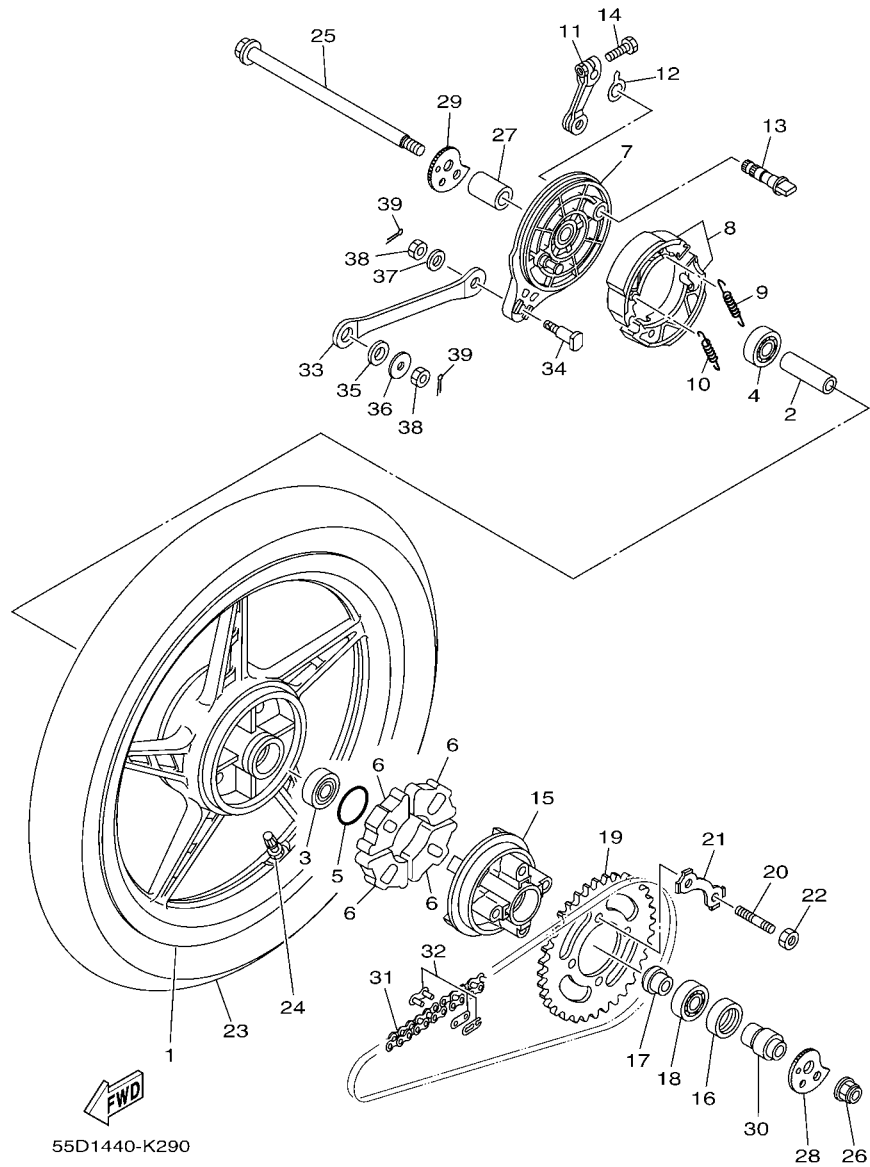


FIG. 29 REAR WHEEL

REF. NO.	PART NO.	DESCRIPTION	55D1				REMARKS
1	1S8-F5338-00-P1	CAST WHEEL, REAR	1				MT2
2	90560-12145	SPACER	1				
3	93306-301YN	BEARING	1				
4	93306-301YM	BEARING	1				
5	93210-41041	O-RING	1				
6	1S8-F5364-00	DAMPER	4				
7	1S8-F5321-00-P0	PLATE, BRAKE SHOE	1				MT2
8	5YP-F530K-00	BRAKE SHOE SET	1				
9	90506-12001	SPRING, TENSION	1				
10	90506-15001	SPRING, TENSION	1				
11	1S8-F5355-00	LEVER, CAMSHAFT	1				
12	5LW-F533A-00	PLATE, INDICATOR	1				
13	4UV-F5351-00	CAMSHAFT	1				
14	90101-06278	BOLT	1				
15	1S8-F5366-00	CLUTCH, HUB	1				
16	93106-26815	OIL SEAL	1				
17	90387-127Y0	COLLAR	1				
18	93306-004XB	BEARING	1				
19	3YR-F5439-10	SPROCKET, DRIVEN (39T)	1				
20	90116-08017	BOLT, STUD	4				
21	5XK-F5412-00	WASHER	2				
22	90170-08258	NUT	4				
23	94108-17815	TIRE (80/90-17 44P)	1				VEE RUBBER
24	93900-00817	VALVE, RIM (TR412)	1				
25	55S-F5381-00	AXLE, WHEEL	1				
26	95607-12200	NUT, SELF-LOCKING	1				
27	55D-F5383-00	COLLAR, WHEEL	1				

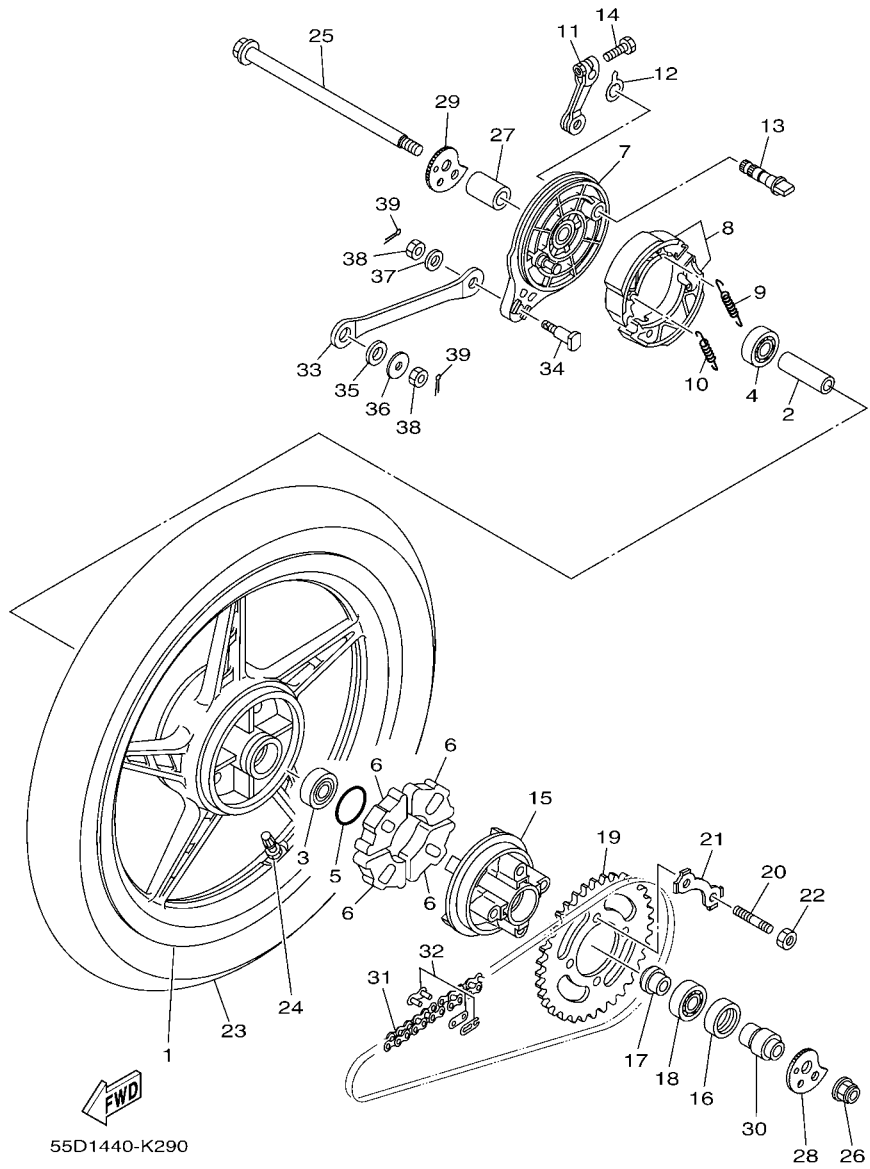


FIG. 29 REAR WHEEL

REF. NO.	PART NO.	DESCRIPTION	55D1				REMARKS
28	50C-F5388-00	PULLER, CHAIN 1	1				
29	50C-F5389-00	PULLER, CHAIN 2	1				
30	55C-F5377-01	COLLAR, WHEEL	1				
31	94568-84113	CHAIN (RK-M 428SB X 113L)	1				
32	94668-84001	JOINT, CHAIN (RK-M 482M)	1				
33	1S8-F5371-01	BAR, TENSION	1				
34	90109-08822	BOLT	1				
35	90202-15800	WASHER, PLATE	1				
36	90201-088N6	WASHER, PLATE	1				
37	92907-08200	WASHER	1				
38	95304-08700	NUT	2				
39	91401-20012	PIN, COTTER	2				

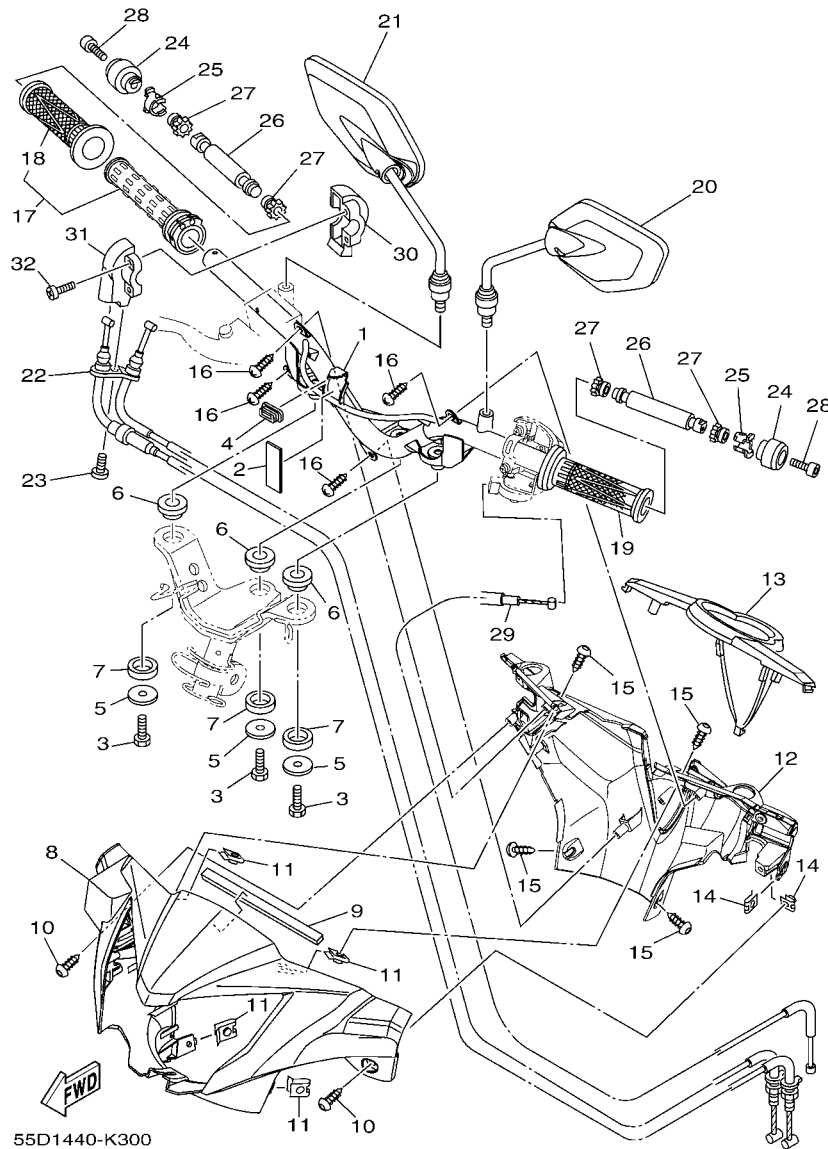
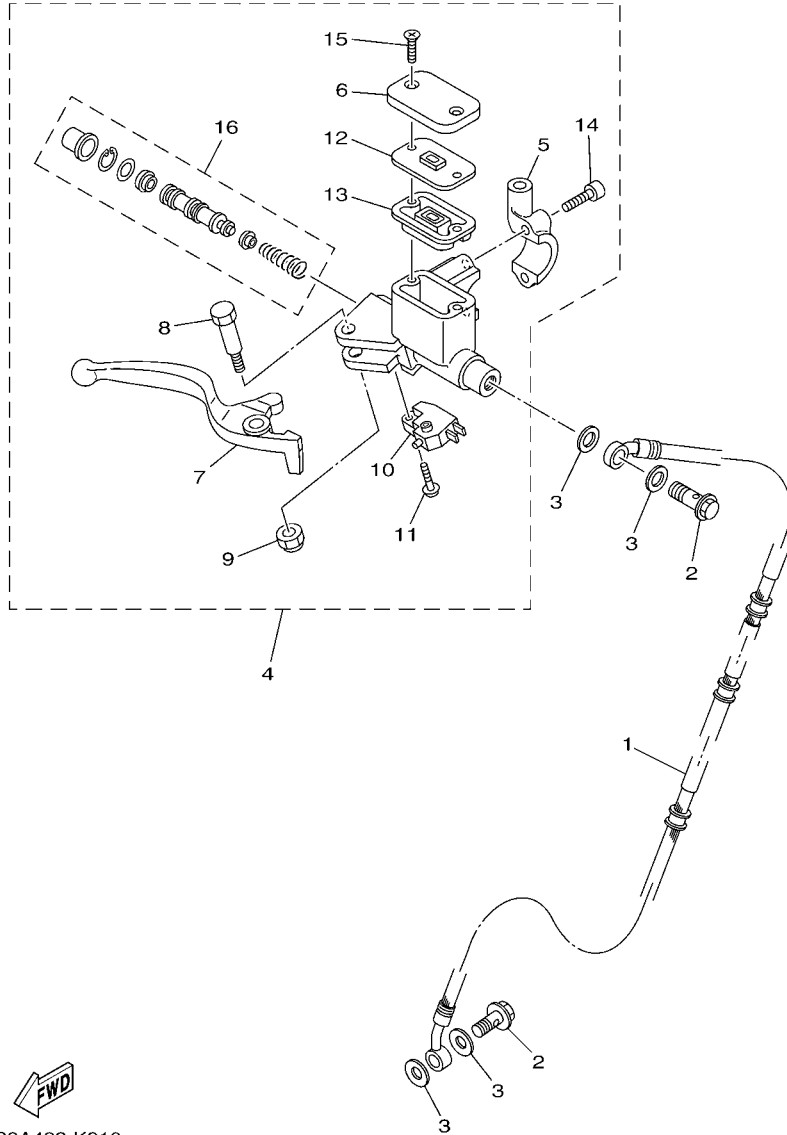


FIG. 30 STEERING HANDLE & CABLE

REF. NO.	PART NO.	DESCRIPTION	55D1				REMARKS
1	55D-F6210-00	HANDLE	1				
2	90520-02813	DAMPER, PLATE	1				
3	97007-08016	BOLT	3				
4	55C-F6326-00	GROMMET	1				
5	90201-08612	WASHER, PLATE	3				
6	1S8-F8217-00	DAMPER 1	3				
7	1S8-F8227-00	DAMPER 2	3				
8	55D-F6143-00-P0	COVER,HAND,UPPER 1	1				UR FOR SMX
	55D-F6143-00-P1	COVER,HAND,UPPER 1	1				UR FOR RM7
	55D-F6143-00-P2	COVER,HAND,UPPER 1	1				UR FOR BWC1
9	90520-04805	DAMPER, PLATE	1				
10	97707-50014	SCREW, TRUSS HEAD TAPPING	2				
11	90183-05042	NUT, SPRING	4				
12	55C-F6145-00	COVER,HAND,UPPER 2	1				
13	55C-H3559-00-P0	COVER, METER	1				S3
14	90183-05042	NUT, SPRING	2				
15	97707-50014	SCREW, TRUSS HEAD TAPPING	4				
16	97707-50012	SCREW, TRUSS HEAD TAPPING	4				
17	55C-F6240-00	GRIP ASSY	1				
18	1S8-F6242-00	.GRIP (RIGHT)	1				
19	1S8-F6241-00	GRIP	1				
20	31D-F6280-00	REAR VIEW MIRROR ASSY (LEFT)	1				
21	31D-F6290-00	REAR VIEW MIRROR ASSY (RIGHT)	1				
22	55C-F6301-10	THROTTLE CABLE ASSY	1				
23	98507-05016	SCREW, PAN HEAD	1				
24	55C-F6246-00	END, GRIP	2				
25	5YP-F6257-00	STOPPER	2				




 1S9A422-K310

FIG. 31 FRONT MASTER CYLINDER

REF. NO.	PART NO.	DESCRIPTION	55D1				REMARKS
1	50C-F5872-00	HOSE, BRAKE 1	1				
2	90401-10159	BOLT, UNION	2				
3	90201-10118	WASHER, PLATE	4				
4	5YP-F583T-10	MASTER CYLINDER ASSY	1				
5	5YP-F5867-10	.BRACKET, MASTER CYLINDER	1				
6	5HV-F5852-00	.CAP, RESERVOIR	1				
7	5YP-H3922-10	.LEVER 2	1				
8	90109-06848	.BOLT	1				
9	9560M-06100	.NUT, U	1				
10	5LW-H3980-00	.FRONT STOP SWITCH ASSY	1				
11	9760L-04212	.SCREW, PAN HEAD	1				
12	5HV-F585B-10	.PLATE, DIAPHRAGM	1				
13	5HV-F5854-10	.DIAPHRAGM, RESERVOIR	1				
14	5LW-F6332-00	.BOLT	2				
15	9870M-04012	.SCREW, FLAT HEAD	2				
16	5YP-W0041-00	.CYLINDER KIT, MASTER	1				

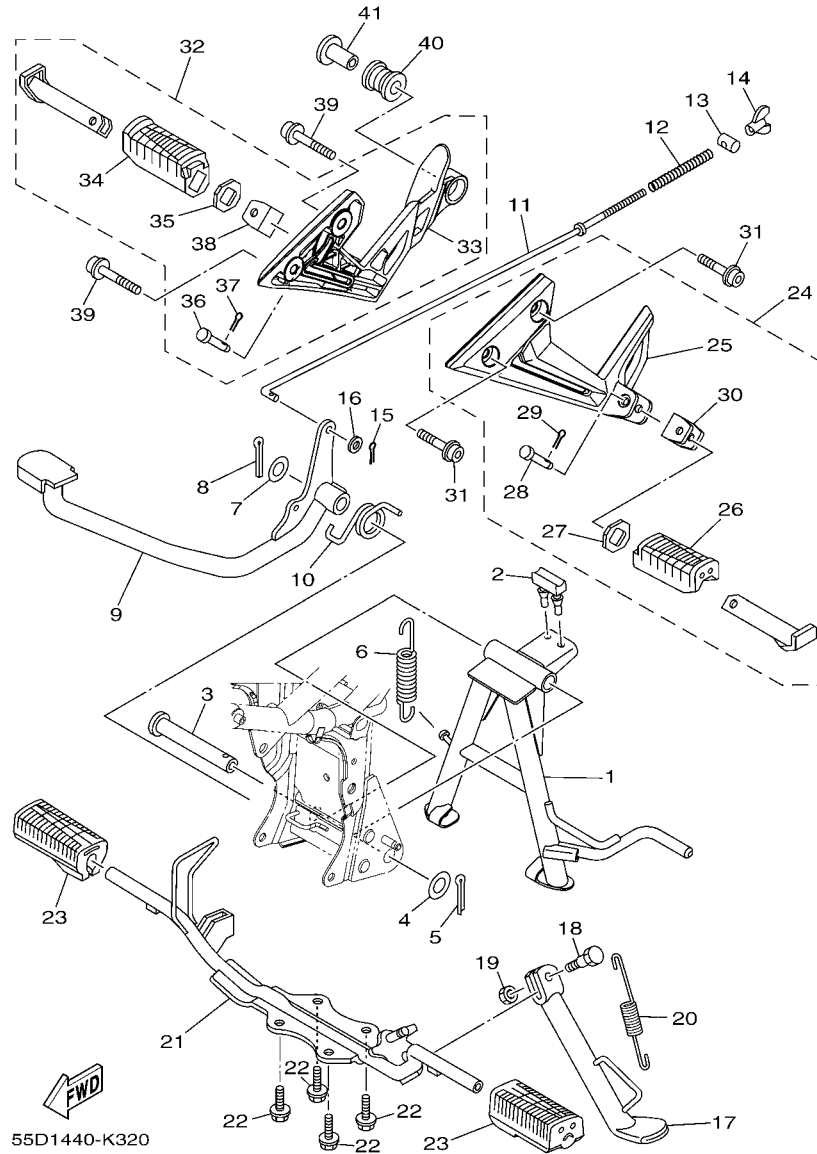


FIG. 32 STAND & FOOTREST

REF. NO.	PART NO.	DESCRIPTION	55D1				REMARKS
1	55D-F7111-00	STAND, MAIN	1				
2	1S8-F7114-00	STOPPER, MAIN STAND	1				
3	5YP-F7112-00	SHAFT, MAIN STAND	1				
4	90201-163H8	WASHER, PLATE	1				
5	91401-30030	PIN, COTTER	1				
6	90506-35806	SPRING, TENSION	1				
7	90201-158D1	WASHER, PLATE	1				
8	91401-30030	PIN, COTTER	1				
9	55D-F7211-00	PEDAL, BRAKE	1				
10	90508-40801	SPRING, TORSION	1				
11	55S-F7231-00	ROD, BRAKE	1				
12	90501-10245	SPRING, COMPRESSION	1				
13	90249-12008	PIN	1				
14	90175-06013	NUT, WING	1				
15	91401-20012	PIN, COTTER	1				
16	92907-06600	WASHER, PLATE	1				
17	1S8-F7311-00	STAND, SIDE	1				
18	90109-08034	BOLT	1				
19	95307-08700	NUT	1				
20	90506-23804	SPRING, TENSION	1				
21	1S8-F7411-00	FOOTREST 1	1				
22	95827-08016	BOLT, FLANGE	4				
23	5LL-F7413-00	COVER, FOOTREST	2				
24	55C-F7430-00-P1	REAR FOOTREST ASSY 1	1				SMX
25	55C-F7452-00-P1	.BRACKET, FOOTREST 1	1				SMX
26	5BU-F7433-00	.COVER, REAR FOOTREST	1				
27	5BU-F7445-00	.PLATE 1	1				

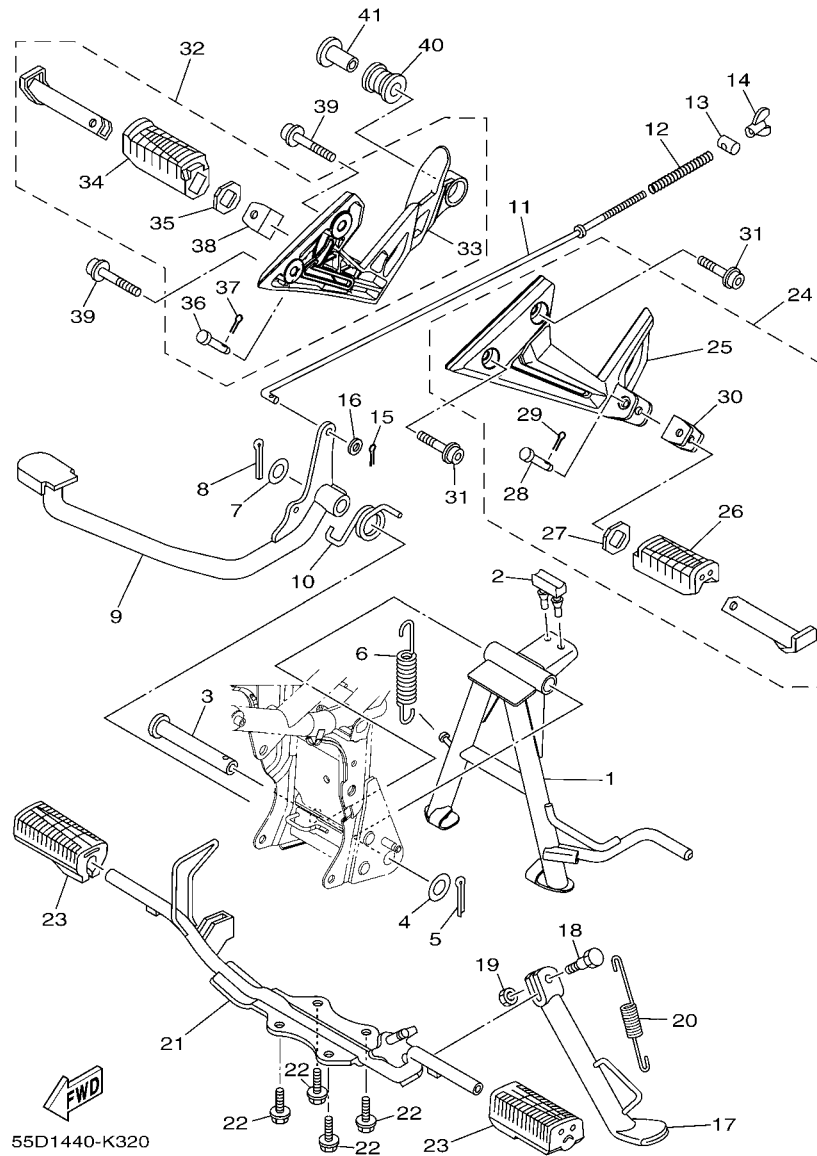


FIG. 32 STAND & FOOTREST

REF. NO.	PART NO.	DESCRIPTION	55D1				REMARKS
28	90240-08145	.PIN, CLEVIS	1				
29	90252-23800	.PIN, COTTER	1				
30	5TF-F7314-00	.STOPPER	1				
31	90110-08199	BOLT, HEXAGON SOCKET HEAD	2				
32	55C-F7440-00-P1	REAR FOOTREST ASSY 2	1				SMX
33	55C-F7462-00-P1	.BRACKET, FOOTREST 2	1				SMX
34	5BU-F7444-00	.COVER, REAR FOOTREST	1				
35	5BU-F7445-00	.PLATE 1	1				
36	90240-08145	.PIN, CLEVIS	1				
37	90252-23800	.PIN, COTTER	1				
38	5TF-F7314-00	.STOPPER	1				
39	90110-08199	BOLT, HEXAGON SOCKET HEAD	2				
40	5TF-F7424-00	DAMPER, FOOTREST 2	1				
41	90387-10805	COLLAR	1				

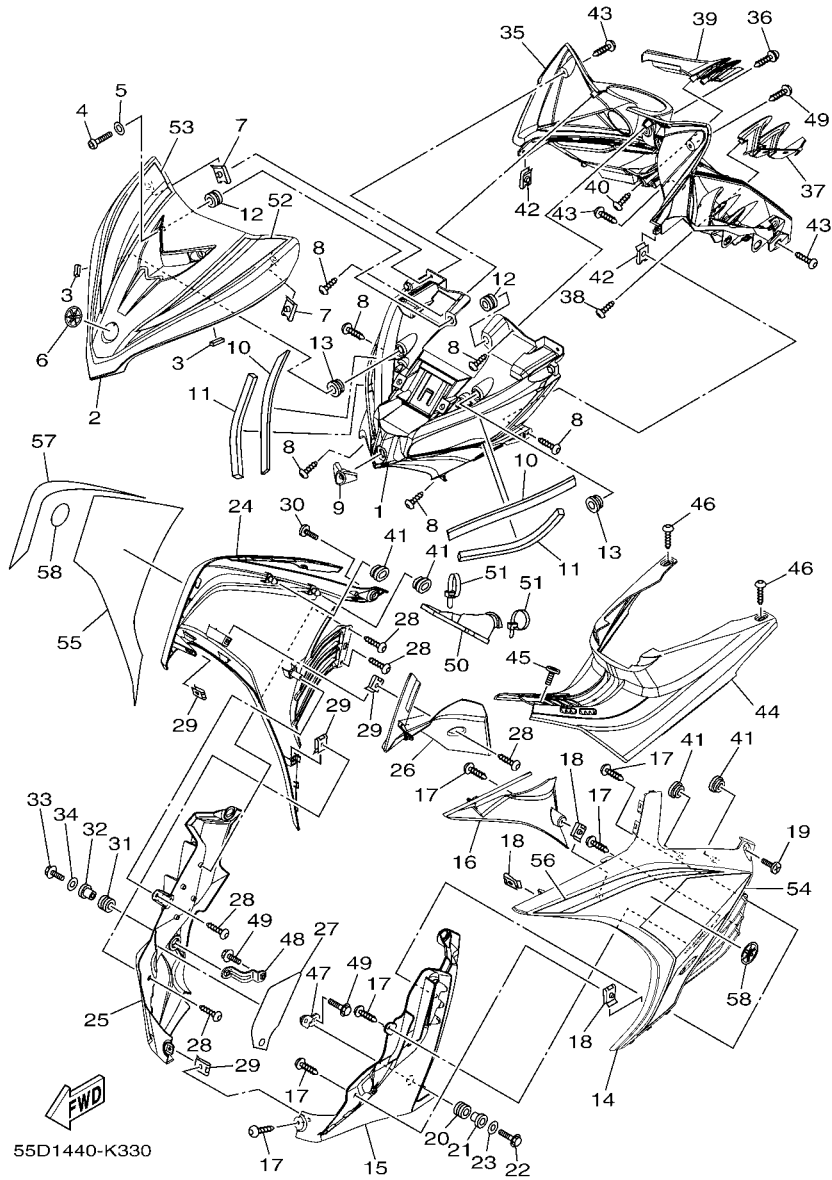


FIG. 33 LEG SHIELD

REF. NO.	PART NO.	DESCRIPTION	55D1			REMARKS
1	55C-F3391-00	PANEL, FRONT	1			
2	55C-F8345-00-P0	MOLE 1	1			UR FOR SMX
	55C-F8345-00-P2	MOLE 1	1			UR FOR RM7
	55C-F8345-00-P1	MOLE 1	1			UR FOR BWC1
3	55C-F844E-00	SEAL 3	2			
4	92017-06012	BOLT, BUTTON HEAD	2			
5	90201-06822	WASHER, PLATE	2			
6	5VW-F313B-00	EMBLEM 1	1			
7	90183-05042	NUT, SPRING	2			
8	97707-50014	SCREW, TRUSS HEAD TAPPING	6			
9	55C-F8187-00	GROMMET	1			
10	90520-05806	DAMPER, PLATE	2			
11	90520-10810	DAMPER, PLATE	2			
12	90480-13807	GROMMET	2			
13	90480-13867	GROMMET	2			
14	55C-F8311-00-P0	LEG SHIELD 1	1			UR FOR SMX
	55C-F8311-00-P2	LEG SHIELD 1	1			UR FOR RM7
	55C-F8311-00-P1	LEG SHIELD 1	1			UR FOR BWC1
15	55C-F835J-00	BODY, FRONT LOWER 1	1			
16	55C-F137U-00	GUIDE, AIR 1	1			
17	97707-50014	SCREW, TRUSS HEAD TAPPING	6			
18	90183-05042	NUT, SPRING	3			
19	90150-06021	SCREW, ROUND HEAD	1			
20	90480-18418	GROMMET	1			
21	90387-09801	COLLAR	1			
22	95807-06020	BOLT, FLANGE	1			
23	90201-06557	WASHER, PLATE	1			

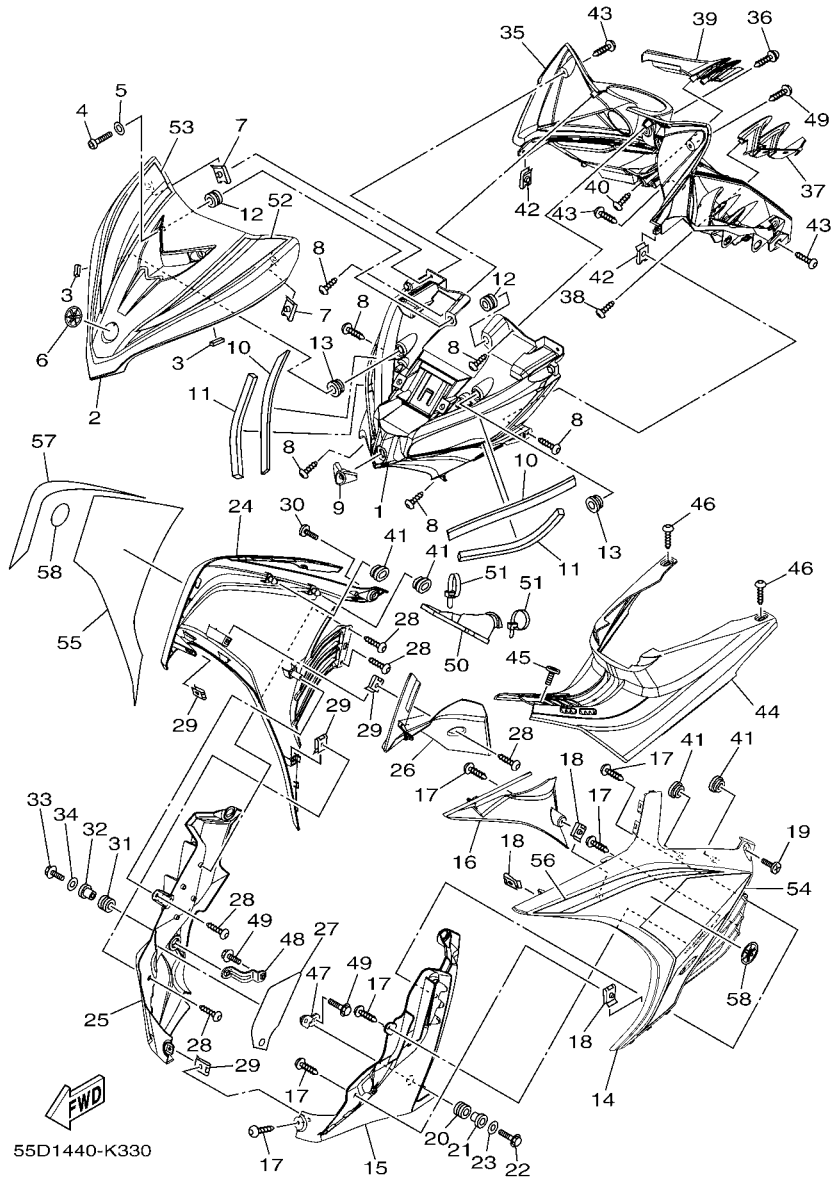


FIG. 33 LEG SHIELD

REF. NO.	PART NO.	DESCRIPTION	55D1			REMARKS
24	55C-F8312-00-P0	LEG SHIELD 2	1			UR FOR SMX
	55C-F8312-00-P2	LEG SHIELD 2	1			UR FOR RM7
	55C-F8312-00-P1	LEG SHIELD 2	1			UR FOR BWC1
25	55C-F835K-00	BODY, FRONT UNDER 2	1			
26	55C-F137V-00	GUIDE, AIR 2	1			
27	50C-F8307-00	SEAL	1			
28	97707-50014	SCREW, TRUSS HEAD TAPPING	5			
29	90183-05042	NUT, SPRING	4			
30	90150-06021	SCREW, ROUND HEAD	1			
31	90480-18418	GROMMET	1			
32	90387-09801	COLLAR	1			
33	95807-06020	BOLT, FLANGE	1			
34	90201-06557	WASHER, PLATE	1			
35	55C-F836K-00	PANEL, INNER 1	1			
36	90159-06181	SCREW, WITH WASHER	1			
37	55C-F8273-00	FIN 1	1			
38	97707-50012	SCREW, TRUSS HEAD TAPPING	2			
39	55C-F8274-00	FIN 2	1			
40	97707-50012	SCREW, TRUSS HEAD TAPPING	2			
41	90480-01813	GROMMET	4			
42	90183-05042	NUT, SPRING	2			
43	97707-50014	SCREW, TRUSS HEAD TAPPING	4			
44	55C-F842N-00	COVER 2	1			
45	90150-06021	SCREW, ROUND HEAD	1			
46	97707-50014	SCREW, TRUSS HEAD TAPPING	2			
47	55D-F8321-00	STAY 1	1			
48	55D-F8322-00	STAY 2	1			

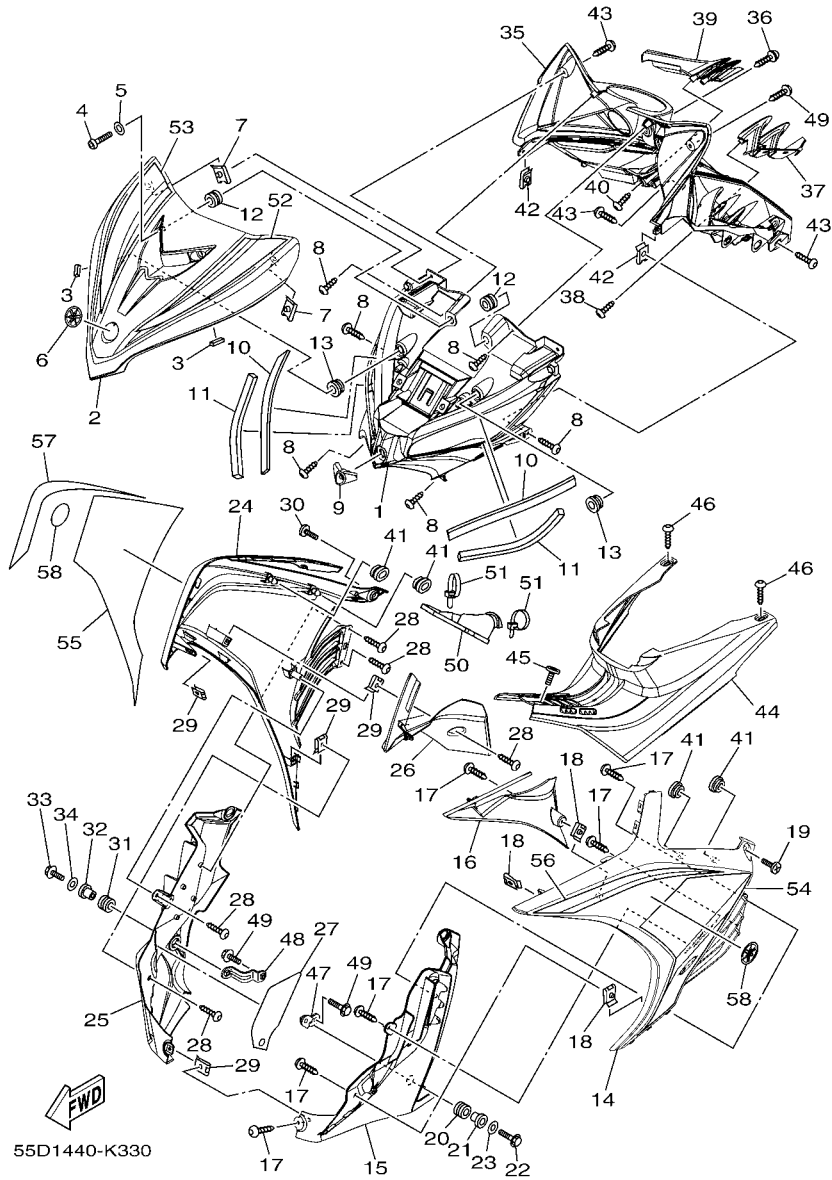
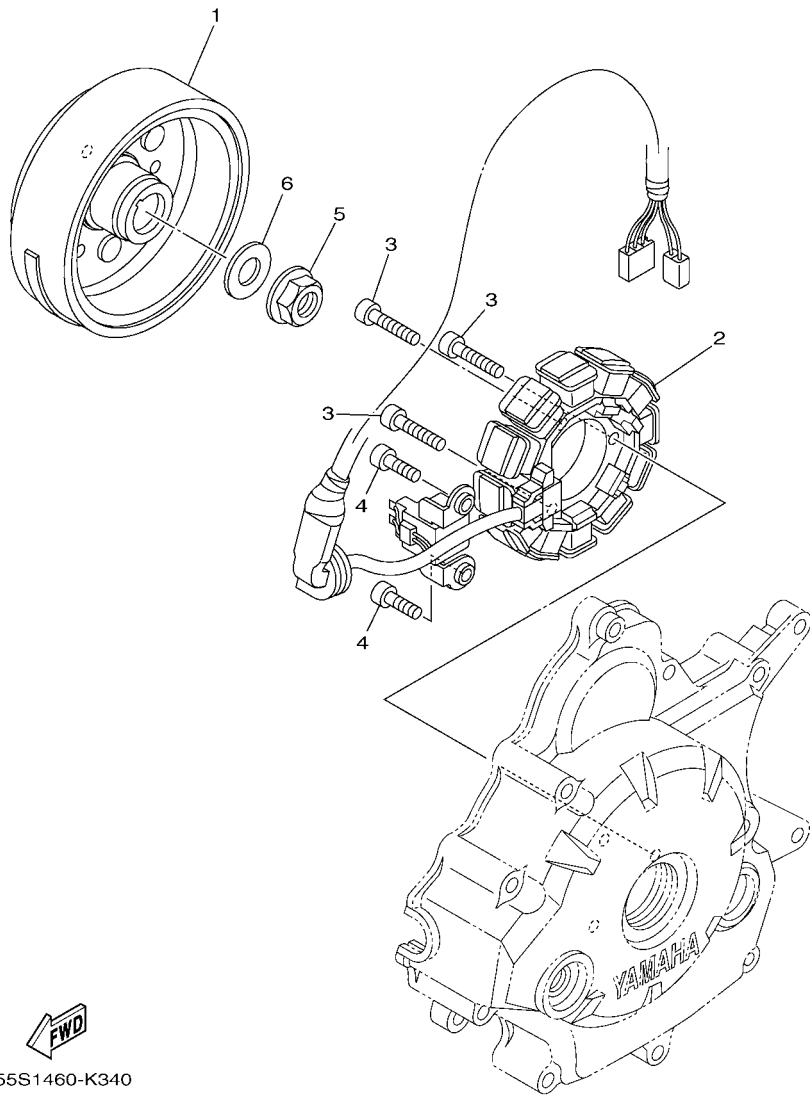


FIG. 33 LEG SHIELD

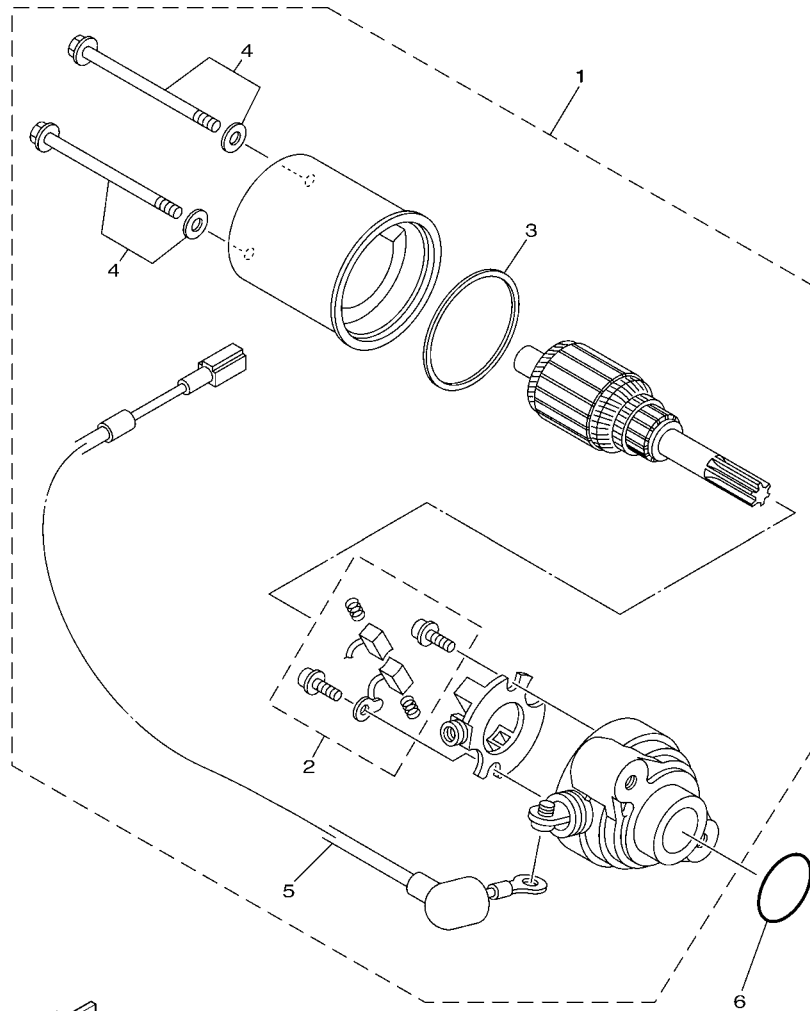
REF. NO.	PART NO.	DESCRIPTION	55D1			REMARKS
49	95807-06020	BOLT, FLANGE	2			
50	1S8-F8336-00	PLATE	1			
51	90464-50801	CLAMP	2			
52	55D-F8391-00	GRAPHIC, 1	1			UR FOR SMX
	55D-F8391-10	GRAPHIC, 1	1			UR FOR RM7
	55D-F8391-20	GRAPHIC, 1	1			UR FOR BWC1
53	55D-F8392-00	GRAPHIC, 2	1			UR FOR SMX
	55D-F8392-10	GRAPHIC, 2	1			UR FOR RM7
	55D-F8392-20	GRAPHIC, 2	1			UR FOR BWC1
54	55D-F8393-00	GRAPHIC, 3	1			UR FOR SMX
	55D-F8393-10	GRAPHIC, 3	1			UR FOR RM7
	55D-F8393-20	GRAPHIC, 3	1			UR FOR BWC1
55	55D-F8394-00	GRAPHIC, 4	1			UR FOR SMX
	55D-F8394-10	GRAPHIC, 4	1			UR FOR RM7
	55D-F8394-20	GRAPHIC, 4	1			UR FOR BWC1
56	55D-F8398-00	GRAPHIC, 5	1			UR FOR SMX
	55D-F8398-10	GRAPHIC, 5	1			UR FOR RM7
	55D-F8398-20	GRAPHIC, 5	1			UR FOR BWC1
57	55D-F8399-00	GRAPHIC, 6	1			UR FOR SMX
	55D-F8399-10	GRAPHIC, 6	1			UR FOR RM7
	55D-F8399-20	GRAPHIC, 6	1			UR FOR BWC1
58	29B-F411B-00	EMBLEM	2			




55S1460-K340

FIG. 34 GENERATOR

REF. NO.	PART NO.	DESCRIPTION	55D1				REMARKS
1	55S-H1450-00	ROTOR ASSY	1				
2	1S7-H1410-01	STATOR ASSY	1				
3	91317-06025	BOLT	3				
4	91317-06016	BOLT	2				
5	95707-12500	NUT, FLANGE	1				
6	90201-122H1	WASHER, PLATE	1				

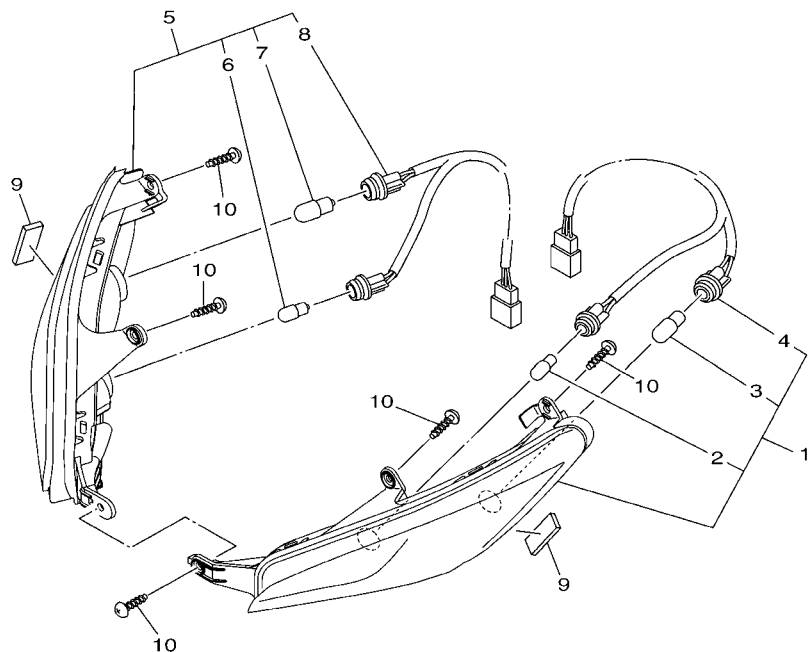


1S9A422-K350

FIG. 35 STARTING MOTOR

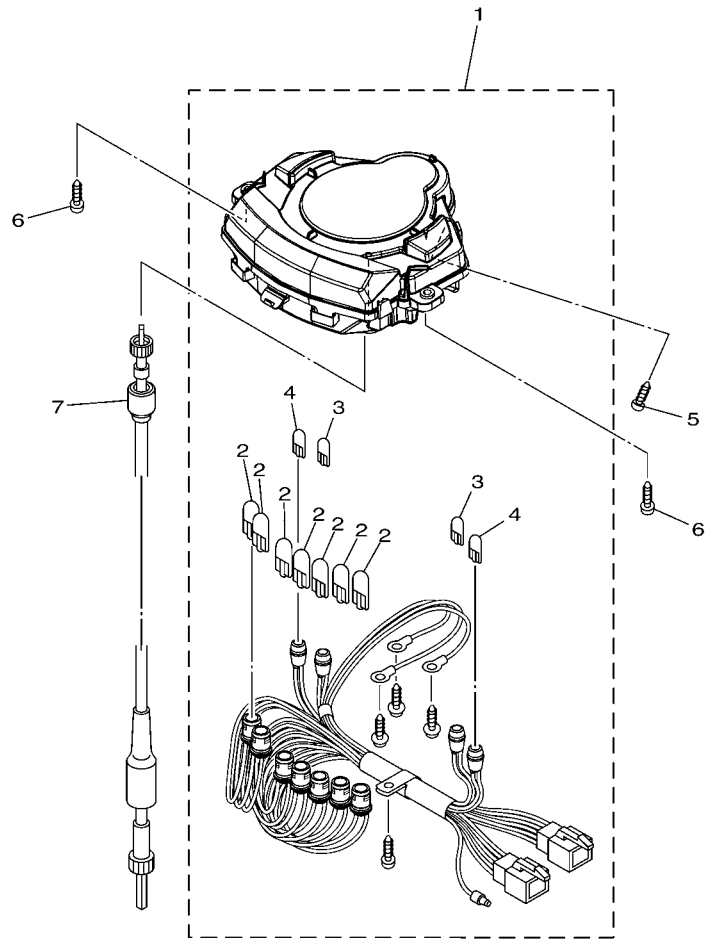
REF. NO.	PART NO.	DESCRIPTION	55D1				REMARKS
1	1S7-H1800-02	STARTING MOTOR ASSY	1				
2	3AY-H1801-00	.BRUSH SET	1				
3	1S7-H1861-00	.GASKET	1				
4	3AY-H1828-00	.SCREW 1	2				
5	5YP-H183G-00	.CORD COMP.	1				
6	93210-26801	O-RING	1				

FIG. 36 FLASHER LIGHT




55D1440-K360

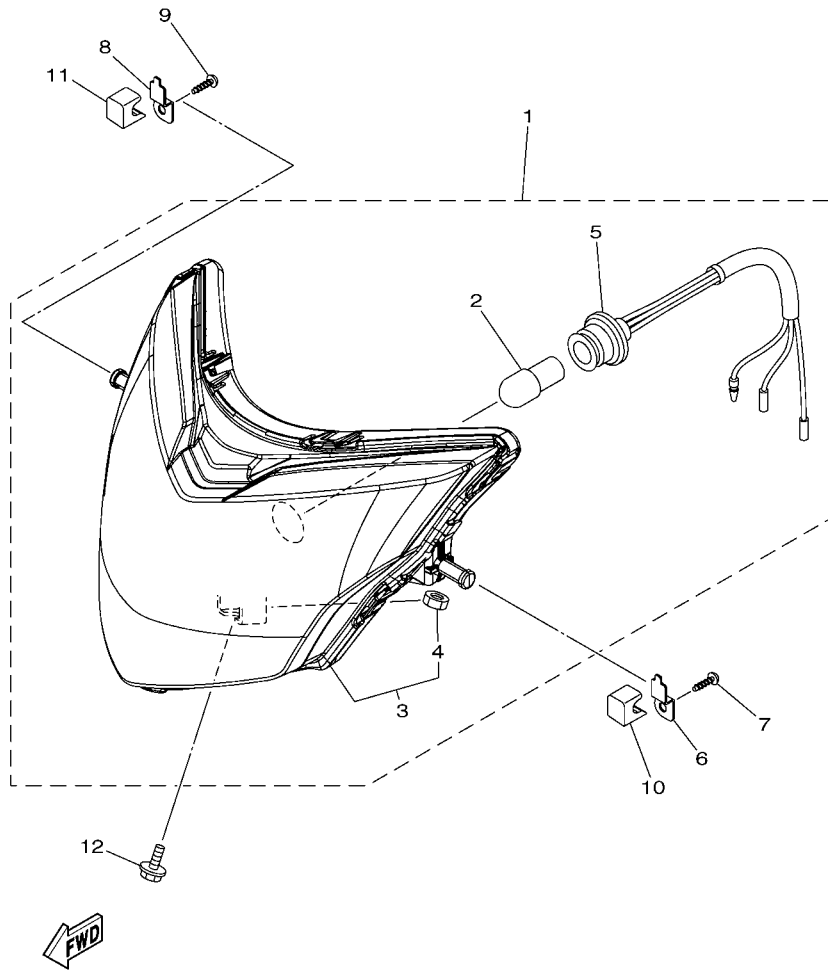
REF. NO.	PART NO.	DESCRIPTION	55D1				REMARKS
1	55D-H3310-00	FRONT FLASHER LIGHT ASSY 1	1				
2	1S8-H3516-00	.BULB (12V-5W)	1				
3	1S8-G3311-00	.BULB, FLASHER (12V-10W T10)	1				
4	55D-H331E-00	.CORD ASSY	1				
5	55D-H3320-00	FRONT FLASHER LIGHT ASSY 2	1				
6	1S8-H3516-00	.BULB (12V-5W)	1				
7	1S8-G3311-00	.BULB, FLASHER (12V-10W T10)	1				
8	55D-H332E-00	.CORD ASSY	1				
9	55C-H3321-00	DAMPER, FLASHER 1	2				
10	97707-50016	SCREW, TRUSS HEAD TAPPING	5				



55D1440-K370

FIG. 37 METER

REF. NO.	PART NO.	DESCRIPTION	55D1				REMARKS
1	55D-H3510-00	SPEEDOMETER ASSY	1				
2	5LW-H3518-00	.BULB, METER (T10 12V-1.7W)	7				
3	5BU-H3517-00	.BULB, METER 1 (T6.5 12V-1.7W)	2				
4	55D-H3519-00	.BULB, METER (T6.5 14V-3W)	2				
5	97707-50016	SCREW, TRUSS HEAD TAPPING	1				
6	97707-50025	SCREW, TAPPING	2				
7	55C-H3550-10	SPEEDOMETER CABLE ASSY	1				



50C1460-K400

FIG. 38 HEADLIGHT

REF. NO.	PART NO.	DESCRIPTION	55D1				REMARKS
1	50C-H4310-00	HEADLIGHT UNIT ASSY	1				
2	5HV-H4314-00	.BULB (12V-32/32W)	1				
3	50C-H4370-00	.HEADLIGHT UNIT ASSY	1				
4	50C-H4326-00	..NUT	1				
5	50C-H4312-00	.CORD ASSY	1				
6	55C-H4781-00	BRACKET 1	1				
7	97707-50016	SCREW, TRUSS HEAD TAPPING	1				
8	55C-H4782-00	BRACKET 2	1				
9	97707-50016	SCREW, TRUSS HEAD TAPPING	1				
10	55C-H411T-00	HOLDER, 1	1				
11	55C-H411U-00	HOLDER, 2	1				
12	95807-06010	BOLT, FLANGE	1				

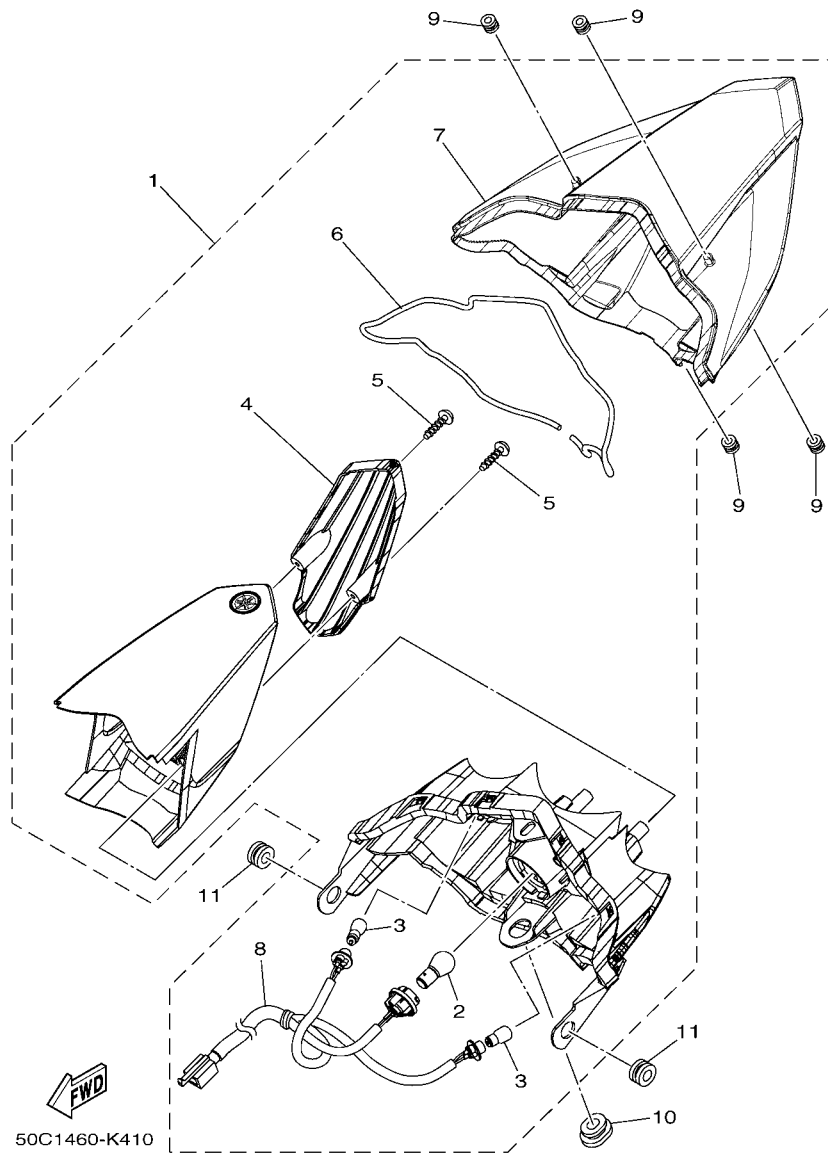


FIG. 39 TAILLIGHT

REF. NO.	PART NO.	DESCRIPTION	55D1				REMARKS
1	50C-H4710-00	TAILLIGHT UNIT ASSY	1				
2	4AC-H4714-00	.BULB (12V-21/5W)	1				
3	5LL-H3311-00	.BULB (12V-10W) AMBER	2				
4	50C-H4721-00	.LENS, TAILLIGHT	1				
5	97707-40616	.SCREW, TAPPING	2				
6	50C-H4723-00	.GASKET, TAIL LENS	1				
7	50C-H4743-00	.LENS, LICENCE LIGHT	1				
8	50C-H4735-00	.SOCKET CORD ASSY	1				
9	55C-H4759-00	GROMMET	4				
10	90480-01868	GROMMET	1				
11	90480-13807	GROMMET	2				

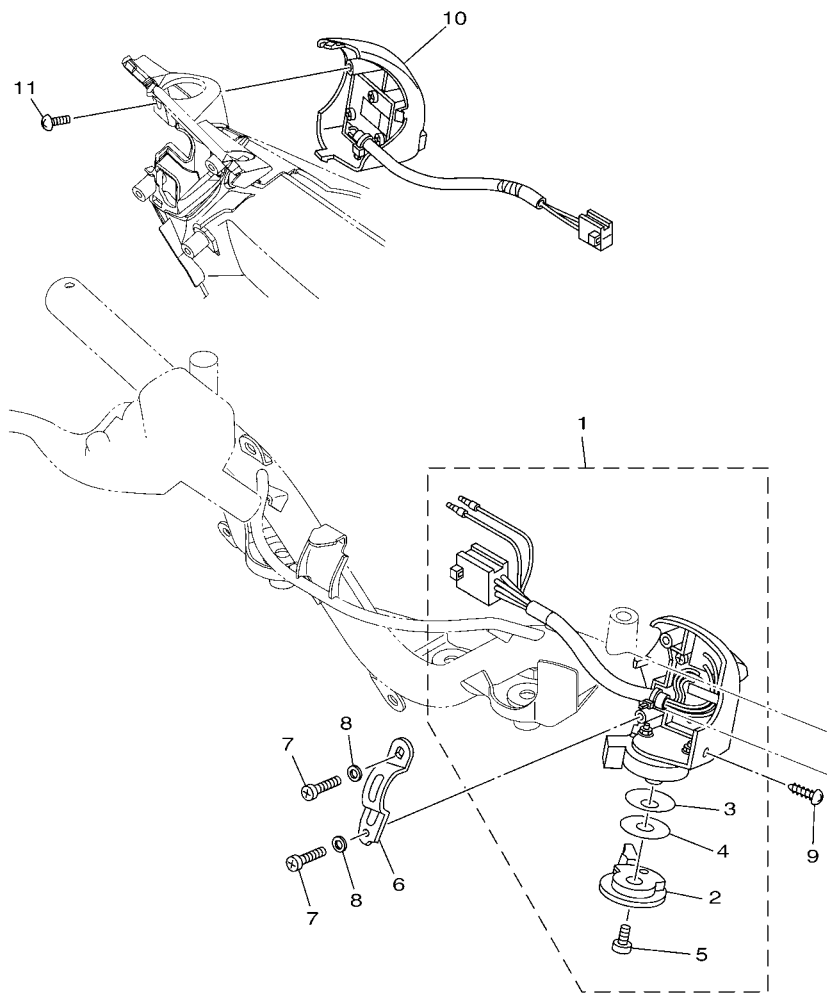
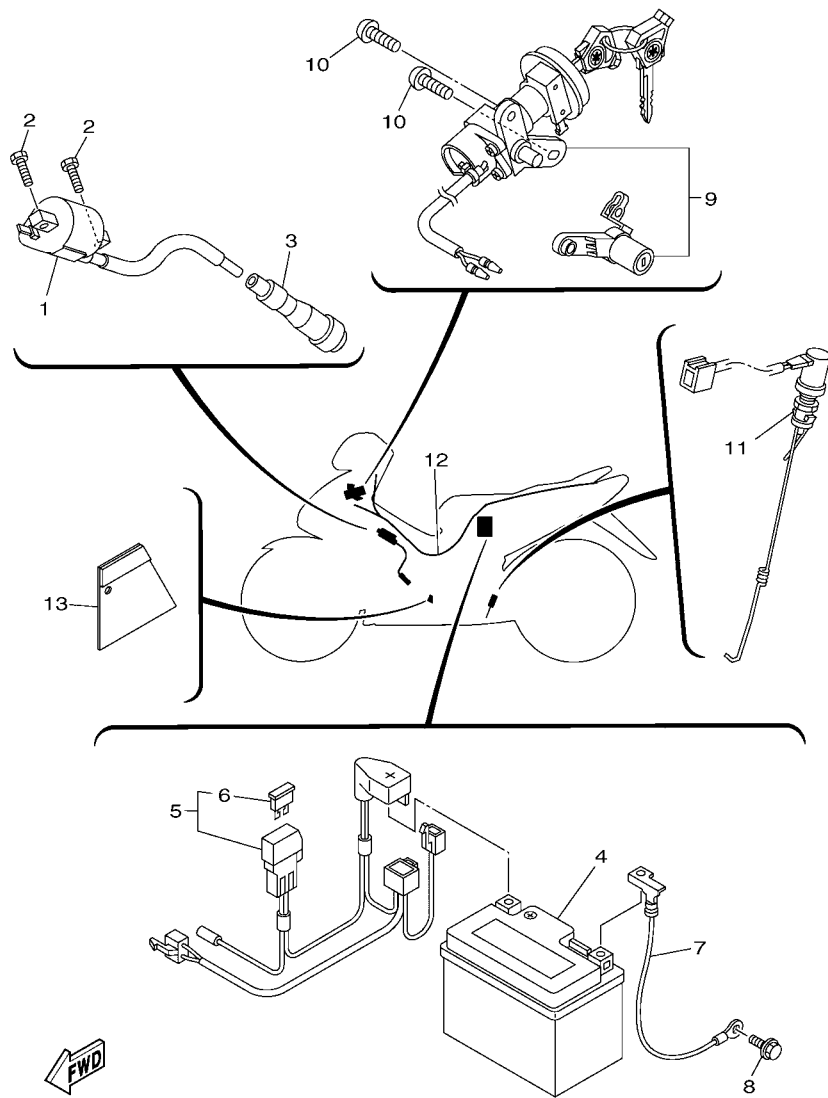


FIG. 40 HANDLE SWITCH & LEVER

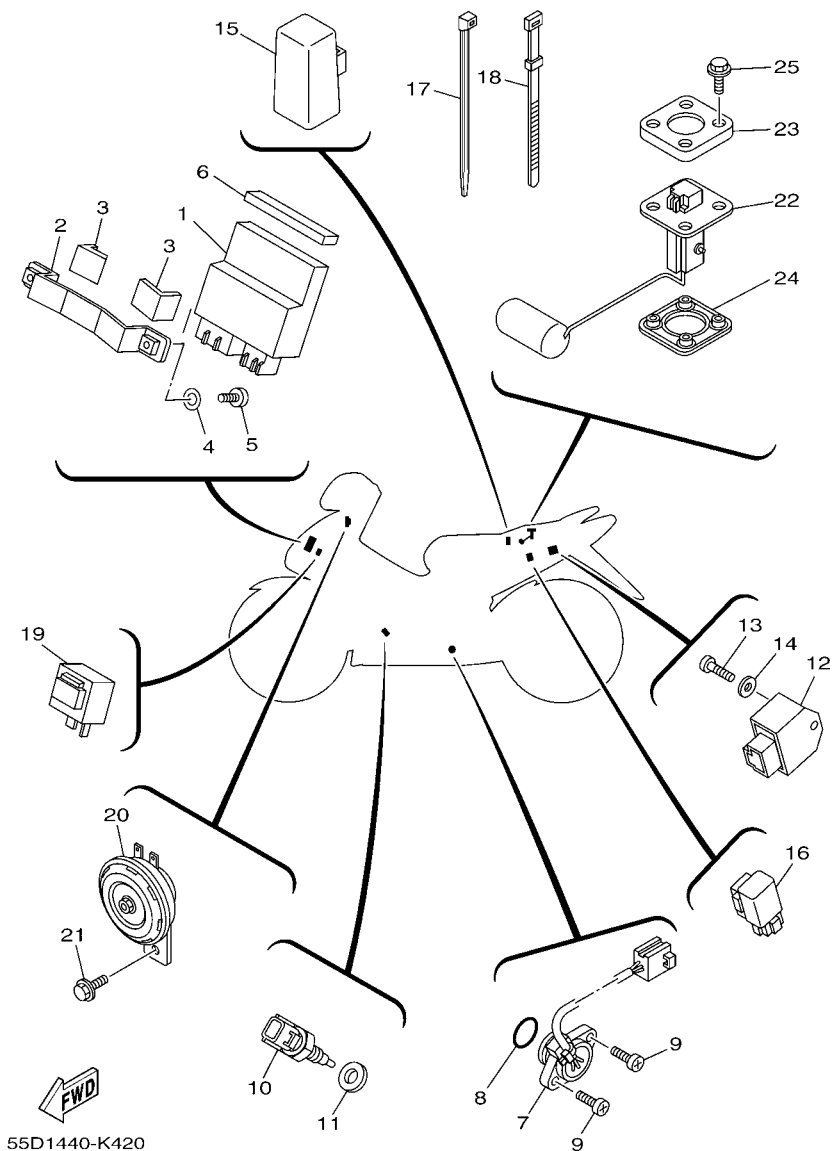
REF. NO.	PART NO.	DESCRIPTION	55D1			REMARKS
1	1S8-H3973-02	SWITCH, HANDLE 3	1			
2	1S8-H3941-00	.LEVER, STARTER	1			
3	1S8-H3947-00	.SPRING	1			
4	1S8-H397X-00	.SPACER	1			
5	9850L-06008	.SCREW, PAN HEAD	1			
6	1S8-H3955-01	BRACKET 1	1			
7	98507-05016	SCREW, PAN HEAD	2			
8	92907-05600	WASHER, PLATE	2			
9	97707-50012	SCREW, TRUSS HEAD TAPPING	1			
10	55C-H3976-00	SWITCH, HANDLE 1	1			
11	97707-50012	SCREW, TRUSS HEAD TAPPING	1			



FWD
50C1460-K430

FIG. 41 ELECTRICAL 1

REF. NO.	PART NO.	DESCRIPTION	55D1				REMARKS
1	4US-H2310-20	IGNITION COIL ASSY	1				
2	97007-06016	BOLT	2				
3	55D-H2370-00	PLUG CAP ASSY	1				
4	10C-H2100-01	BATTERY ASSY (GS GTZ5S)	1				
5	55C-H2150-00	FUSE HOLDER ASSY	1				
6	5VW-H2151-00	FUSE (10A)	1				
7	55C-H2116-00	WIRE, MINUS LEAD	1				
8	95027-06010	BOLT, FLANGE	1				
9	50C-XH252-00	MAIN SWITCH SUB ASSY.	1				
10	90149-06030	SCREW	2				
11	1S9-H2530-11	STOP SWITCH ASSY	1				
12	55D-H2590-00	WIRE HARNESS ASSY	1				
13	1S8-F117F-00	COVER	1				



55D1440-K420

FIG. 42 ELECTRICAL 2

REF. NO.	PART NO.	DESCRIPTION	55D1				REMARKS
1	50C-H5540-00	C.D.I. UNIT ASSY	1				
2	55C-F8426-00	BRACKET 1	1				
3	90520-04804	DAMPER, PLATE	2				
4	90201-06830	WASHER, PLATE	2				
5	98507-06012	SCREW, PAN HEAD	2				
6	90520-96802	DAMPER, PLATE	1				
7	5YP-H2540-00	NEUTRAL SWITCH ASSY	1				
8	93210-21800	O-RING	1				
9	98507-05016	SCREW, PAN HEAD	2				
10	5YP-85790-00	THERMOSENSOR ASSY	1				
11	90430-12801	GASKET	1				
12	25D-H1960-00	RECTIFIER & REGULATOR ASSY	1				
13	98507-06012	SCREW, PAN HEAD	1				
14	92907-06600	WASHER, PLATE	1				
15	5TN-H1940-00	STARTER RELAY ASSY	1				
16	5YP-H1950-00	RELAY ASSY	1				
17	90464-50800	CLAMP	6				
18	3AY-H3936-10	BAND, SWITCH CORD	1				
19	5TF-H3350-00	FLASHER RELAY ASSY	1				
20	5TF-H3371-00	HORN	1				
21	95807-06010	BOLT, FLANGE	1				
22	1S8-H5752-00	SENDER UNIT ASSY, FUEL METER	1				
23	5BU-H5757-00	RETAINER	1				
24	5BU-H5753-00	GASKET, SENDER UNIT	1				
25	90119-05071	BOLT, WITH WASHER	4				

NUMERICAL INDEX

PART NO.	REF. NO.	PART NO.	REF. NO.	PART NO.	REF. NO.	PART NO.	REF. NO.	PART NO.	REF. NO.	PART NO.	REF. NO.
1S8-11633-01	2 - 10	1S8-E1181-01	1 - 19	1S8-E3329-00	7 - 2	5YP-E5614-00	14 - 7	1S8-E8110-00	18 - 22	55C-F1731-00-P0	21 - 6
1S8-11681-01	2 - 3	1S7-E1185-01	5 - 4	1S8-E3411-00	7 - 5	2N9-E5618-00	13 - 12	5H3-E8113-00	18 - 23	55C-F1731-00-P1	21 - 6
5YP-12117-00	3 - 6	1S8-E1191-00	1 - 6	5YP-E3440-00	7 - 8	1S8-E5620-00	13 - 11	5YP-E8120-00	17 - 8	55C-F1731-00-P2	21 - 6
1WG-12118-00	3 - 5	5YP-E1193-00	1 - 14	5YP-E3447-10	7 - 9	5YP-E5641-00	13 - 2	5YP-E8127-00	18 - 6	55D-F173E-00	21 - 38
5YP-12411-00	6 - 1	1S7-E1196-00	5 - 5	5YP-E3474-01	8 - 10	5YP-E5661-00	13 - 1	5YP-E8140-00	18 - 7	55D-F173E-10	21 - 38
5LW-14103-00	9 - 27	50C-E1311-00	1 - 23	50C-E3536-00	8 - 2	5YP-E5664-00	13 - 4	5YP-E8172-00	18 - 3	55D-F173E-20	21 - 38
50C-14105-00	9 - 29	55D-E1351-00	1 - 24	1S7-E3542-00	8 - 4	5YP-E5671-00	13 - 3	1S8-E8173-00	18 - 16	55D-F173F-00	21 - 39
31S-14112-00	9 - 4	1S8-E1422-00	2 - 6	5MX-E3575-01	8 - 22	5YP-E5674-00	13 - 9	5YP-E8175-00	18 - 9	55D-F173F-10	21 - 39
509-14135-00	9 - 25	50C-E1603-00	2 - 12	50C-E3586-00	8 - 3	5YP-E5696-00	13 - 7	5YP-E8179-00	18 - 2	55D-F173F-20	21 - 39
50C-14137-00	9 - 39	5YP-E1631-21	2 - 9	55C-E4197-00	8 - 8	5YP-E5767-00	13 - 5	1S8-E817A-00	18 - 17	55C-F1741-00-P0	21 - 10
5P0-14141-13	9 - 37	5YP-E1651-10	2 - 5	1S8-E4293-00	21 - 36	5YP-E6116-00	15 - 1	5YP-E8181-00	18 - 4	55C-F1741-00-P1	21 - 10
5P0-14142-15	9 - 30	50C-E1951-00	5 - 8	50C-E4411-00	8 - 11	5YP-E6131-00	15 - 4	5YP-E8185-00	17 - 2	55C-F1741-00-P2	21 - 10
5HK-14147-00	9 - 11	1S7-E1952-01	5 - 9	1S7-E4412-00	8 - 12	1S8-E6135-00	15 - 29	5YP-E8186-00	18 - 18	55D-F174G-00	21 - 40
5LW-14147-00	9 - 36	5YP-E2111-00	3 - 1	1S7-E4425-00	8 - 21	5YP-E6143-00	15 - 13	5YP-E8337-00	18 - 10	55D-F174G-10	21 - 40
5FC-14149-00	9 - 35	5YP-E2113-00	3 - 4	1S7-E4437-00	8 - 18	5YP-E6144-00	15 - 7	5YP-E8511-00	17 - 11	55D-F174G-20	21 - 40
5LW-14150-00	9 - 12	5YP-E2119-00	3 - 3	5TL-E443E-00	8 - 16	5YP-E6150-00	15 - 18	5YP-E8512-00	17 - 12	55D-F174H-00	21 - 41
5LW-14171-10	9 - 38	5YP-E2121-00	3 - 2	1S7-E4450-00	8 - 13	1S8-E6181-00	15 - 17	55D-E8531-00	17 - 9	55D-F174H-10	21 - 41
22F-14173-00	9 - 28	5YP-E2126-00	3 - 7	1S7-E4452-00	8 - 15	5YP-E6182-00	15 - 2	5YP-E8540-00	17 - 1	55D-F174H-20	21 - 41
3RW-14174-00	9 - 23	5YP-E2151-00	3 - 8	50C-E4453-00	8 - 14	5YP-E6321-00	15 - 21	4TT-E8542-00	17 - 6	55C-F177G-00	21 - 31
353-14186-00	9 - 13	1S8-E2156-00	3 - 14	1S8-E4613-00	10 - 12	5YP-E6324-00	15 - 20	5TN-E8545-00	16 - 16	55D-F1781-00	21 - 37
5MP-14191-00	9 - 21	5YP-E2157-00	4 - 7	55D-E4703-00	10 - 1	5YP-E6331-00	15 - 22	5YP-E8549-00	17 - 3	55D-F1781-10	21 - 37
3G2-14231-23	9 - 10	5YP-E2159-00	3 - 9	55C-E4718-00	10 - 2	5YP-E6333-00	15 - 26	5YP-E8561-00	16 - 15	55C-F1817-00	21 - 28
4JG-14261-00	9 - 31		3 - 12	55C-E4728-00	10 - 3	5HV-E6346-00	18 - 21	55D-F1110-00	19 - 1	5YP-F1871-00	21 - 17
50C-14261-00	9 - 5	5YP-E2161-00	3 - 11	29B-E4747-00	10 - 19	5YP-E6351-00	15 - 25	55C-F1161-00	23 - 13	5YP-F1875-00	21 - 22
5HK-14275-00	9 - 33	21S-E2170-01	4 - 1	55C-E4787-00	10 - 4	5YP-E6356-00	15 - 32	50C-F1173-00	21 - 25	55D-F2110-00	22 - 1
33S-14280-00	9 - 32	5MX-E2210-00	4 - 15	5YP-E4840-00	1 - 9	5YP-E6357-00	15 - 31	1S8-F117F-00	41 - 13	4UL-F2123-00	22 - 2
5YP-14429-00	9 - 9	1S8-E2213-01	4 - 17	1S7-E4877-01	8 - 32	5YP-E6371-00	15 - 19	1S8-F117G-00	19 - 15	50C-F2141-00	22 - 6
5YP-14561-00	9 - 20	5MX-E2222-00	4 - 16	1S8-E4881-01	8 - 35	5YP-E6383-00	15 - 23	55C-F117K-00	26 - 16	1S8-F2151-00	22 - 3
50C-14589-00	9 - 6	1S8-E2231-00	4 - 11	55C-E4882-00	8 - 28	5YP-E6384-00	15 - 24	1S8-F1315-00	19 - 10	55C-F2210-00	22 - 11
5YP-1482K-00	1 - 8	1S8-E2241-00	4 - 12	5YP-E4890-00	1 - 10	5YP-E6512-00	15 - 11	1S8-F1316-00	19 - 11	55D-F3100-00	24 - 1
55D-1490J-00	9 - 7	1B9-E2280-02	4 - 5	55D-E4901-00	9 - 1	5YP-E6539-00	15 - 5	55C-F137U-00	33 - 16	55C-F3110-00	24 - 8
5AP-14940-00	9 - 34	5YP-E2288-00	4 - 6	5YP-E5113-00	12 - 11	5YP-E6586-00	15 - 12	55C-F137V-00	33 - 26	4VK-F3111-10	24 - 19
5LW-14958-00	9 - 3	5YP-E2405-00	6 - 6	1S8-E5150-00	11 - 1	5YP-E6611-00	15 - 3	1S8-F139R-00	19 - 12	1S9-F3126-30	24 - 5
5HK-14985-00	9 - 15	1S8-E2413-00	6 - 2	1S8-E5351-00	7 - 4	5YP-E6620-00	15 - 9	1S8-F139X-00	19 - 13	1S9-F3136-30	24 - 2
5LW-14994-00	9 - 19	1S7-E2422-00	5 - 1	1S8-E5362-00	12 - 22	5YP-E6628-00	15 - 28	55C-F1511-00-P0	20 - 1	5VW-F313B-00	33 - 6
50C-14995-00	9 - 24	50C-E2428-00	5 - 3	5YP-E5377-00	12 - 16	5YP-E6777-00	15 - 27	55C-F1511-00-P1	20 - 1	50C-F3141-00	24 - 15
22F-23411-01	23 - 4	1S8-E2443-01	6 - 13	1S8-E5411-00	12 - 1	5YP-E7121-00	16 - 6	55C-F1511-00-P2	20 - 1	5LL-F3144-00	24 - 14
156-23412-00	23 - 1	1S7-E2450-00	5 - 7	55D-E5418-00	12 - 12	5YP-E7131-00	16 - 2	15K-F1518-00	20 - 5	4UV-F3145-00	24 - 3
22F-23412-01	23 - 3	5YP-E2461-00	6 - 5	1S8-E5421-00	12 - 17	5YP-E7141-00	16 - 3	55C-F160E-00	20 - 10		24 - 6
5TL-2341E-00	23 - 2	1S8-E2481-00	6 - 15	55D-E5451-00	12 - 2	5YP-E7211-00	16 - 22	55C-F1611-00	20 - 6	2JG-F3147-00	24 - 20
5TL-2341E-10	23 - 5	1S8-E2482-00	6 - 17	55D-E5461-00	12 - 18	5YP-E7221-00	16 - 14	55D-F1650-00	22 - 8	5TF-F3152-00	24 - 11
5LW-24411-00	9 - 2	5YP-E2491-00	6 - 3	5YP-E5514-00	14 - 1	5YP-E7231-00	16 - 21	55C-F1711-00-P2	21 - 1	5P0-F3156-00	24 - 4
4X8-24512-00	25 - 14	5YP-E2576-00	6 - 19	1S8-E5521-00	14 - 2	5YP-E7241-00	16 - 20	55C-F1721-00-P2	21 - 3		24 - 7
5YP-85790-00	42 - 10	5P0-E2590-00	6 - 9	5YP-E5524-00	14 - 3	5YP-E7411-00	16 - 1	55C-F172E-00	21 - 15	2JG-F3157-00	24 - 10
1S8-E1102-00	1 - 1	5YP-E2671-00	6 - 8	5YP-E5555-00	13 - 8	5YP-E7421-00	16 - 13	5YP-F172K-00	21 - 19	509-F3158-L0	24 - 12
1S8-E111F-00	4 - 8	5YP-E2675-00	6 - 7	5YP-E5580-00	14 - 5	1S8-E7456-00	16 - 29	1S8-F172L-00	21 - 23	5P2-F3170-00	24 - 9
5YP-E1133-10	1 - 2	1S7-E3300-00	7 - 1	5HV-E5583-00	14 - 6	1S8-E7471-00	16 - 11	5YP-F172M-00	21 - 24	31D-F3181-50	24 - 13
50C-E1166-00	8 - 25	1S8-E3327-00	7 - 12	1S8-E5598-00	4 - 14	5YP-E8101-00	18 - 1	1S8-F172W-00	21 - 26	55C-F331A-00	23 - 11

NUMERICAL INDEX

PART NO.	REF. NO.	PART NO.	REF. NO.	PART NO.	REF. NO.	PART NO.	REF. NO.	PART NO.	REF. NO.	PART NO.	REF. NO.
50C-F3340-00	24 - 16	50C-F5389-00	29 - 29	5TF-F7314-00	32 - 38	55D-F8398-20	33 - 56	1S8-H3947-00	40 - 3	90109-084F7	28 - 2
4D0-F3346-00	24 - 18	5XK-F5412-00	29 - 21	1S8-F7411-00	32 - 21	55D-F8399-00	33 - 57	1S8-H3955-01	40 - 6	90109-08822	29 - 34
55C-F3389-00	23 - 15	3YR-F5439-10	29 - 19	5LL-F7413-00	32 - 23	55D-F8399-10	33 - 57	1S8-H3973-02	40 - 1	90110-08199	32 - 31
55C-F3391-00	33 - 1	44S-F580U-00	28 - 3	5TF-F7424-00	32 - 40	55D-F8399-20	33 - 57	55C-H3976-00	40 - 10		32 - 39
49P-F3411-00	24 - 17	5P0-F5827-00	28 - 14	55C-F7430-00-P1	32 - 24	55C-F8426-00	42 - 2	1S8-H397X-00	40 - 4	90111-06802	10 - 11
5VV-F3416-00	23 - 6	5TN-F582U-01	28 - 1	5BU-F7433-00	32 - 26	55C-F842N-00	33 - 44	5LW-H3980-00	31 - 10	90116-08017	29 - 20
55C-F3461-00	23 - 8	5YP-F583T-10	31 - 4	55C-F7440-00-P1	32 - 32	55C-F844E-00	33 - 3	55C-H411T-00	38 - 10	90119-05071	42 - 25
1S8-F4110-00	25 - 1	5HV-F5852-00	31 - 6	5BU-F7444-00	32 - 34	1S8-G3311-00	36 - 3	55C-H411U-00	38 - 11	90119-06044	20 - 8
29B-F411B-00	33 - 58	5HV-F5854-10	31 - 13	5BU-F7445-00	32 - 27		36 - 7	50C-H4310-00	38 - 1		21 - 18
21S-F4141-00	25 - 7	5HV-F585B-10	31 - 12		32 - 35	1S7-H1410-01	34 - 2	50C-H4312-00	38 - 5		21 - 34
55C-F4311-00	25 - 9	5YP-F5867-10	31 - 5	55C-F7452-00-P1	32 - 25	55S-H1450-00	34 - 1	5HV-H4314-00	38 - 2		23 - 16
55C-F4312-00	25 - 10	50C-F5872-00	31 - 1	55C-F7462-00-P1	32 - 33	1S7-H1800-02	35 - 1	50C-H4326-00	38 - 4	90119-06051	8 - 24
1S8-F4339-00	25 - 2	55C-F5875-00	23 - 17	1S8-F8100-00	19 - 16	3AY-H1801-00	35 - 2	50C-H4370-00	38 - 3	90119-06190	25 - 6
1S8-F4397-00	25 - 4	55C-F5876-00	23 - 21	55C-F8187-00	33 - 9	3AY-H1828-00	35 - 4	50C-H4710-00	39 - 1	90149-06011	25 - 15
5YP-F4500-00	25 - 13	50C-F587A-00	23 - 19	1S8-F8217-00	30 - 6	5YP-H183G-00	35 - 5	4AC-H4714-00	39 - 2	90149-06030	41 - 10
5LW-F4610-00	25 - 17	5YP-F5917-00	28 - 6	1S8-F8227-00	30 - 7	1S7-H1861-00	35 - 3	50C-H4721-00	39 - 4	90149-06829	4 - 13
5LW-F4612-00	25 - 18	5P0-F5919-00	28 - 11	55C-F8273-00	33 - 37	5TN-H1940-00	42 - 15	50C-H4723-00	39 - 6	90150-06021	33 - 19
1S8-F4638-00	25 - 3	5YP-F5924-00	28 - 12	55C-F8274-00	33 - 39	5YP-H1950-00	42 - 16	50C-H4735-00	39 - 8		33 - 30
55D-F470F-00	26 - 2	5YP-F5925-01	28 - 10	50C-F8307-00	33 - 27	25D-H1960-00	42 - 12	50C-H4743-00	39 - 7		33 - 45
5TF-F4723-00	26 - 3	5YP-F5937-00	28 - 7	55C-F8311-00-P0	33 - 14	10C-H2100-01	41 - 4	55C-H4759-00	39 - 9	90153-06803	1 - 3
55C-F4726-00	26 - 5	5YP-F5939-00	28 - 13	55C-F8311-00-P1	33 - 14	55C-H2116-00	41 - 7	55C-H4781-00	38 - 6		1 - 25
5VV-F4727-00	26 - 9	55D-F6143-00-P0	30 - 8	55C-F8311-00-P2	33 - 14	5VW-H2131-00	21 - 35	55C-H4782-00	38 - 8	90159-06033	26 - 17
1S8-F4728-00	26 - 12	55D-F6143-00-P1	30 - 8	55C-F8312-00-P0	33 - 24	55C-H2150-00	41 - 5	4XC-H5111-00	20 - 7	90159-06181	21 - 9
55D-F4730-00	26 - 1	55D-F6143-00-P2	30 - 8	55C-F8312-00-P1	33 - 24	5VW-H2151-00	41 - 6	50C-H5540-00	42 - 1		21 - 13
4HF-F4741-00	26 - 4	55C-F6145-00	30 - 12	55C-F8312-00-P2	33 - 24	4US-H2310-20	41 - 1	1S8-H5752-00	42 - 22		33 - 36
1S8-F4742-00	26 - 6	55D-F6210-00	30 - 1	55D-F8321-00	33 - 47	55D-H2370-00	41 - 3	5BU-H5753-00	42 - 24	90163-05803	8 - 19
1S8-F4768-00	26 - 21	1S8-F622F-00	30 - 27	55D-F8322-00	33 - 48	1S9-H2530-11	41 - 11	5BU-H5757-00	42 - 23	90170-05302	3 - 10
55C-F4773-00-P0	26 - 19	55C-F622H-00	30 - 26	1S8-F8336-00	33 - 50	5YP-H2540-00	42 - 7	18D-H5885-00	9 - 8		3 - 13
55C-F4773-00-P1	26 - 19	55C-F6240-00	30 - 17	55C-F8345-00-P0	33 - 2	55D-H2590-00	41 - 12	5YP-W0041-00	31 - 16	90170-08258	29 - 22
55C-F4773-00-P2	26 - 19	1S8-F6241-00	30 - 19	55C-F8345-00-P1	33 - 2	55D-H3310-00	36 - 1	3C1-W0045-10	28 - 9	90175-06013	32 - 14
5P0-F4780-01	26 - 10	1S8-F6242-00	30 - 18	55C-F8345-00-P2	33 - 2	5LL-H3311-00	39 - 3	5YP-W0047-50	28 - 5	90179-08818	19 - 8
55C-F478E-10	26 - 18	55C-F6246-00	30 - 24	55C-F835J-00	33 - 15	55D-H331E-00	36 - 4	4C9-W0048-00	28 - 8	90179-10017	13 - 13
1S8-F5168-00-P1	27 - 1	5YP-F6257-00	30 - 25	55C-F835K-00	33 - 25	55D-H3320-00	36 - 5	5P0-W0057-00	28 - 4	90179-10811	19 - 9
3NA-F5181-01	27 - 8	31D-F6280-00	30 - 20	55C-F836K-00	33 - 35	55C-H3321-00	36 - 9	1S8-WE140-11	2 - 1	90179-12659	15 - 16
5TN-F5190-01	27 - 11	5P2-F6281-00	30 - 30	55D-F8391-00	33 - 52	55D-H332E-00	36 - 8	1S8-WE141-00	2 - 2	90179-14001	15 - 30
5YP-F530K-00	29 - 8	5P2-F6282-00	30 - 31	55D-F8391-10	33 - 52	5TF-H3350-00	42 - 19	50C-XH252-00	41 - 9	90179-25802	23 - 7
1S8-F5321-00-P0	29 - 7	31D-F6290-00	30 - 21	55D-F8391-20	33 - 52	5TF-H3371-00	42 - 20	90101-06278	29 - 14	90183-05042	20 - 9
1S8-F5338-00-P1	29 - 1	55C-F6301-10	30 - 22	55D-F8392-00	33 - 53	55D-H3510-00	37 - 1	90105-06061	8 - 7		21 - 2
5LW-F533A-00	29 - 12	55C-F6326-00	30 - 4	55D-F8392-10	33 - 53	1S8-H3516-00	36 - 2	90105-06848	6 - 4		21 - 4
4UV-F5351-00	29 - 13	55C-F6331-10	30 - 29	55D-F8392-20	33 - 53		36 - 6	90105-08850	1 - 16		21 - 7
1S8-F5355-00	29 - 11	5LW-F6332-00	31 - 14	55D-F8393-00	33 - 54	5BU-H3517-00	37 - 3	90105-088D8	19 - 5		21 - 11
1S8-F5364-00	29 - 6	55D-F7111-00	32 - 1	55D-F8393-10	33 - 54	5LW-H3518-00	37 - 2	90105-088D9	19 - 4		21 - 33
1S8-F5366-00	29 - 15	5YP-F7112-00	32 - 3	55D-F8393-20	33 - 54	55D-H3519-00	37 - 4	90105-10036	23 - 9		30 - 11
1S8-F5371-01	29 - 33	1S8-F7114-00	32 - 2	55D-F8394-00	33 - 55	55C-H3550-10	37 - 7	90105-10323	22 - 12		30 - 14
55C-F5377-01	29 - 30	55D-F7211-00	32 - 9	55D-F8394-10	33 - 55	55C-H3559-00-P0	30 - 13	90105-10824	28 - 15		33 - 7
55S-F5381-00	29 - 25	55S-F7231-00	32 - 11	55D-F8394-20	33 - 55	5YP-H3922-10	31 - 7	90105-10861	19 - 3		33 - 18
55D-F5383-00	29 - 27	1S8-F7311-00	32 - 17	55D-F8398-00	33 - 56	3AY-H3936-10	42 - 18	90109-06848	31 - 8		33 - 29
50C-F5388-00	29 - 28	5TF-F7314-00	32 - 30	55D-F8398-10	33 - 56	1S8-H3941-00	40 - 2	90109-08034	32 - 18		33 - 42

NUMERICAL INDEX

PART NO.	REF. NO.	PART NO.	REF. NO.	PART NO.	REF. NO.	PART NO.	REF. NO.	PART NO.	REF. NO.	PART NO.	REF. NO.
90183-06023	8 - 23	90387-061Y1	10 - 10	90480-15363	6 - 10	93101-10841	12 - 24	94568-A8096	4 - 10	95827-06014	22 - 9
90185-10091	27 - 9	90387-06681	22 - 5	90480-18418	33 - 20	93102-12883	18 - 5	94668-84001	29 - 32	95827-06016	6 - 11
90185-10154	23 - 10	90387-06804	20 - 4		33 - 31	93102-16800	13 - 14	94700-00884	1 - 18		20 - 2
90201-06069	6 - 12	90387-068B0	8 - 33	90501-030A0	14 - 8	93102-20881	16 - 27	95027-06010	4 - 9	95827-06020	26 - 20
90201-06071	26 - 14	90387-07819	22 - 10	90501-04801	15 - 14	93103-10801	5 - 2		16 - 30	95827-08016	32 - 22
90201-06072	20 - 3	90387-08822	10 - 20	90501-06022	17 - 7	93106-20816	27 - 3		41 - 8	95827-10045	10 - 15
90201-06557	33 - 23	90387-09801	33 - 21	90501-06800	17 - 10	93106-26815	29 - 16	95027-06012	5 - 12	97007-06016	41 - 2
	33 - 34		33 - 32	90501-10245	32 - 12	93210-068E9	18 - 19	95027-06014	1 - 11	97007-06025	25 - 5
90201-06822	33 - 5	90387-10277	27 - 7	90501-125E9	18 - 14	93210-09805	4 - 2	95027-06020	1 - 12	97007-08016	30 - 3
90201-06830	42 - 4	90387-10805	32 - 41	90501-18576	7 - 6	93210-11802	1 - 15	95027-06025	5 - 11	97027-06016	8 - 34
90201-068N7	26 - 7	90387-127Y0	29 - 17	90506-12001	29 - 9	93210-14899	12 - 8		5 - 13	97027-08020	18 - 24
90201-08609	1 - 17	90401-10159	31 - 2	90506-15001	29 - 10	93210-19809	5 - 15	95027-06050	5 - 14	97607-04114	9 - 26
90201-08612	10 - 18	90430-06817	1 - 4	90506-23804	32 - 20	93210-198F0	12 - 23	9502L-06012	7 - 13	9760L-04212	31 - 11
	30 - 5		1 - 13	90506-35806	32 - 6	93210-21800	42 - 8	9502L-06020	7 - 10	97707-40616	39 - 5
90201-08804	19 - 6		1 - 26	90508-40801	32 - 10	93210-26801	35 - 6	9502L-06040	12 - 4	97707-50012	21 - 8
90201-088N6	29 - 36	90430-12801	42 - 11	90520-02806	21 - 5	93210-32803	12 - 10		12 - 20		21 - 12
90201-10118	31 - 3	90445-07812	25 - 8	90520-02807	21 - 32	93210-32807	8 - 1	9502L-06045	11 - 5		21 - 16
90201-10141	10 - 16	90445-09823	21 - 27	90520-02813	30 - 2	93210-34801	7 - 7	9502L-06050	11 - 4		30 - 16
90201-101J1	19 - 7	90450-27803	6 - 16	90520-04804	42 - 3	93210-41041	29 - 5		12 - 5		33 - 38
	27 - 10		6 - 18	90520-04805	30 - 9	93210-59800	7 - 11		12 - 21		33 - 40
90201-12019	15 - 15	90462-08814	8 - 20	90520-04806	21 - 14	93210-84801	5 - 6	9502L-06060	11 - 3		40 - 9
90201-122H1	34 - 6	90462-08817	12 - 6	90520-05806	33 - 10	93306-000Y3	5 - 10		12 - 25		40 - 11
90201-126A7	18 - 15	90464-50800	42 - 17	90520-10810	33 - 11	93306-001X2	4 - 3	95304-08700	29 - 38	97707-50014	30 - 10
90201-12817	18 - 11	90464-50801	33 - 51	90520-96802	42 - 6	93306-002X8	16 - 25	95307-06600	26 - 8		30 - 15
90201-15700	16 - 7	90467-07029	8 - 9	90560-10292	27 - 2	93306-004XB	29 - 18		26 - 15		33 - 8
	16 - 23	90467-08003	21 - 29	90560-12145	29 - 2	93306-004XR	16 - 9	95307-08700	32 - 19		33 - 17
90201-158D1	32 - 7	90467-08075	25 - 12	91317-06014	14 - 9	93306-204YL	16 - 26	95602-10200	22 - 13		33 - 28
90201-163H8	32 - 4	90467-08801	8 - 5	91317-06016	4 - 18	93306-252X1	16 - 10	95607-12200	29 - 26		33 - 43
90201-167P7	15 - 10		8 - 6		13 - 10	93306-300X8	27 - 4	9560M-06100	31 - 9		33 - 46
90201-16803	13 - 6	90467-09006	21 - 30		34 - 4	93306-301YM	29 - 4	95617-08620	1 - 5	97707-50016	36 - 10
90201-25021	14 - 4		25 - 11	91317-06025	17 - 4	93306-301YN	29 - 3	95617-12100	22 - 7		37 - 5
90201-26802	16 - 17	90467-10038	6 - 20		34 - 3	93306-305X7	2 - 7	95707-06500	18 - 20		38 - 7
90202-05187	10 - 7	90467-12800	8 - 17	91317-06030	30 - 28	93310-528X7	2 - 4		23 - 12		38 - 9
90202-05188	10 - 8	90467-13064	8 - 27	91317-06100	1 - 22	93340-212Y2	18 - 12	95707-08500	10 - 13	97707-50025	37 - 6
90202-05193	25 - 16	90467-13858	8 - 26	91317-10100	19 - 2	93410-20809	16 - 5	95707-10500	10 - 14	98507-04008	9 - 14
90202-15800	29 - 35	90467-14117	8 - 31	91401-20012	29 - 39	93410-22820	16 - 19	95707-12500	34 - 5	98507-04014	9 - 22
90206-06090	10 - 6	90467-15012	8 - 29		32 - 15	93450-16115	2 - 11	95807-06010	38 - 12	98507-04018	9 - 17
90209-17285	16 - 4		8 - 30	91401-30030	32 - 5	93503-16807	15 - 33		42 - 21	98507-05008	9 - 16
90209-18208	16 - 18	90480-01803	6 - 14		32 - 8	93602-08810	15 - 6	95807-06012	22 - 4	98507-05010	9 - 18
90240-08145	32 - 28	90480-01813	33 - 41	91811-10005	1 - 7	93604-10837	18 - 13		23 - 20	98507-05016	30 - 23
	32 - 36	90480-01868	19 - 14	92017-05025	7 - 3	93604-12831	17 - 5		23 - 22		40 - 7
90249-12008	32 - 13		39 - 10	92017-06010	23 - 14	93605-06002	4 - 4	95807-06020	21 - 20		42 - 9
90252-23800	32 - 29	90480-13805	21 - 21	92017-06012	23 - 18	93822-15811	16 - 28		33 - 22	98507-05025	30 - 32
	32 - 37	90480-13807	33 - 12		33 - 4	93900-00817	27 - 6		33 - 33	98507-06012	26 - 11
90280-03017	2 - 8		39 - 11	92907-05600	40 - 8		29 - 24		33 - 49		42 - 5
90340-14812	12 - 7	90480-13808	12 - 14	92907-06600	32 - 16	94107-17817	27 - 5	95807-06025	12 - 13		42 - 13
90340-32815	12 - 9	90480-13867	33 - 13		42 - 14	94108-17815	29 - 23	95807-08035	10 - 17	9850L-06008	40 - 5
90387-06063	12 - 15	90480-14872	26 - 13	92907-08200	29 - 37	94568-84113	29 - 31	95827-06014	18 - 8	98517-06012	16 - 12

NUMERICAL INDEX

PART NO.	REF. NO.	PART NO.	REF. NO.	PART NO.	REF. NO.	PART NO.	REF. NO.	PART NO.	REF. NO.
9870M-04012	31 - 15								
98980-06010	10 - 5								
98980-06014	10 - 9								
99009-15400	16 - 8								
	16 - 24								
99009-28400	15 - 8								
99530-10114	1 - 20								
	1 - 21								
	11 - 2								
	12 - 3								
	12 - 19								